

ASHE / D9 JOINT WORKSHOP

Improving Delivery Through Better Communication, Quality & Accountability

&

Planned Consultant Opportunities for 2026

Presented to:



JAMES T. PRUSS, JR., P.E.

ASSISTANT DISTRICT EXECUTIVE - DESIGN

APRIL 23, 2026



Pennsylvania
Department of Transportation

- **Staffing Updates**
- New D9 Consultant **Feedback Tool**
- **What We're Seeing** (Good and Bad)
- Upcoming **Opportunities**

**De
Sta**



**on
ate**

DESIGN DIVISION STAFFING

PennDOT District 9-0 Design

DESIGN - BRIDGE

Scott Roberts, P.E.
District Bridge Engineer
(814) 696-7180

DESIGN REVIEWS

Dustin Ohler, P.E.
Asst. Bridge Engr. - D
(814) 696-7281

Joe Ladson, P.E.
Asst. Bridge Engr. - Insp.
(814) 317-3054

Joel Gallagher, P.E.
Project Manager
(814) 317-3063

Ed Grove, E.I.T.
Project Manager
(814) 696-7181

James Eitner, P.E.
Project Manager
(814) 696-7184

Dave Lanzendorfer, P.E.
Project Manager
(814) 317-3051

John Mauger, P.E.
Project Manager
(814) 696-7172

Use the QR Code below to be added to the PennDOT District 9 Design Division Dispatch List



Kristy Dick
Clerk Typist 2
(814) 696-7189

P.E. Lead
er 8

P.E.
er 9

ack
r 6

Mark Rowland
Utility Relocation Specialist
(814) 317-3062

Beth Anderson
Utility Relocation Specialist
(814) 317-3048

ENVIRONMENTAL

Yocum
Environmental Planning Manager
(814) 696-7224

PERMITS

Steve Jano
Permit Manager
(814) 696-7211

Leland Mowery, E.I.T.
CE Trnspt
(814) 696-7263

Jamie Chestney
Evntrl Plnr 2
(814) 696-7227

Andy Gonsman
Env Plnr 2
(814) 696-4299

Feedback

New Tools for Continuous Improvement

Survey



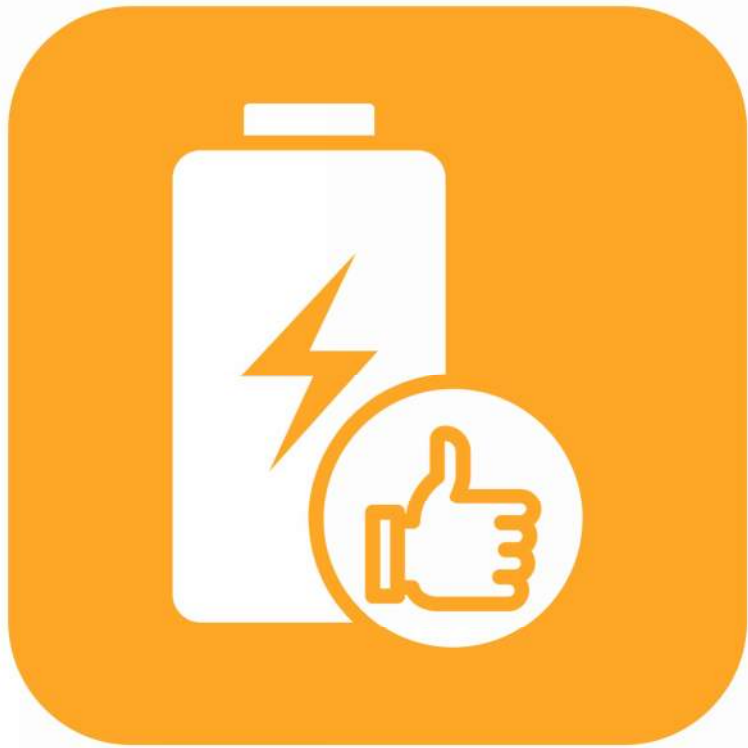
WHY WE'RE ADDING A FEEDBACK TOOL

- Valuable **feedback and ideas** aren't always captured
- No consistent way to share **what's working (or not)**
- Lessons learned aren't always carried **forward**
- Opportunity to **continuously improve** as a district

TWO WAYS TO GIVE FEEDBACK

Quick Comment (2 minutes)

- Issues, ideas, or feedback **anytime**



Structured Survey

- **More detailed input** across key areas



Communication

- Responsiveness, clarity, expectations

Reviews

- Timeliness, consistency, value

Coordination

- Internal + external alignment

Digital Delivery

- Tools, efficiency, usability

QR CODES

Consultant Survey - Quick Comment Form



District 9 Consultant Feedback Survey



James T. Pruss, Jr., P.E.
Assistant District Executive
Design
(814) 696-6850

DESIGN - PLANS

Nicki Donahoe, P.E.
Portfolio Manager
(814) 317-1650

PLANS DEVELOPMENT

Hook, P.E.
Plans Lead
(814) 696-7139

Michael Stone, P.E.
QA / QC Lead
(814) 696-7157

Kevin Keirn, P.E.
Project Manager
(814) 696-7299

Nolan Paronish
Project Manager
(814) 317-3144

Mike Ivock
Engineer
(814) 317-3137

Mitch Foreback
Highway Designer
(814) 317-3143

Adam Sherlock, E.I.T.
Project Manager
(814) 696-7198

Chaz Dean
Civil Engineer
(814) 696-6851

PLANNING

Edson, E.I.T.
Manager
(814) 696-7265

Civil Engineer Trainee
(814) 317-3144

Use the QR Code below to be added to the PennDOT District 9 Design Division Dispatch List



Dmitry Pater
Civil Engineer
(814) 317-3040

Chris Allison
Trans Planning Spec 1
(814) 696-7166

Ronie Taneyhill
Business Analyst
(814) 696-7267

Brandon Sliko
Geospatial Specialist
(814) 696-7235

Consultant Survey - Quick Comment Form



District 9 Consultant Feedback Survey



NEPA

Sarah McClellan
District Environmental Planning Supv Trnspt
(814) 696-7280

Attilio Squillario
Env Plnr 2
(814) 696-7116

Nicole Lundberg
Env Plnr 1
(814) 696-7250

Tina Enderlein
Env Plnr 2
(814) 696-7153

PERMITS

Steve Jano
Permit Manager
(814) 696-7211

Leland Mowery, E.I.T.
CE Trnspt
(814) 696-7263

Jamie Chestney
Envtl Plnr 2
(814) 696-7227

Andy Gonsman
Env Plnr 2
(814) 696-4299

WHAT WE'LL DO WITH THE FEEDBACK

- **Identify trends** (not one-off complaints)
- **Address recurring issues**
- **Improve processes** and expectations
- **Close the loop** with you

What We're Seeing

D9 Expectations for Consultant led Design Projects

Communication

- Open communication of schedule concerns
- Bring recommended solutions
- Written follow-up

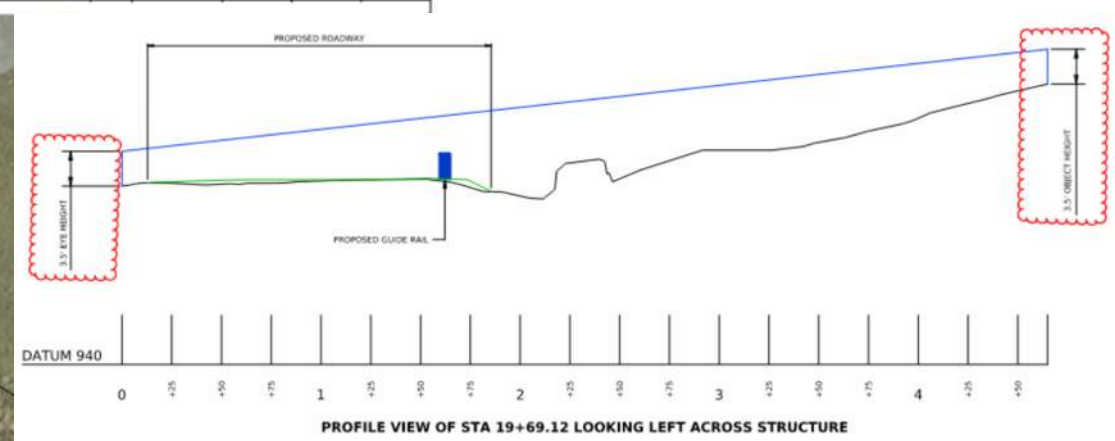
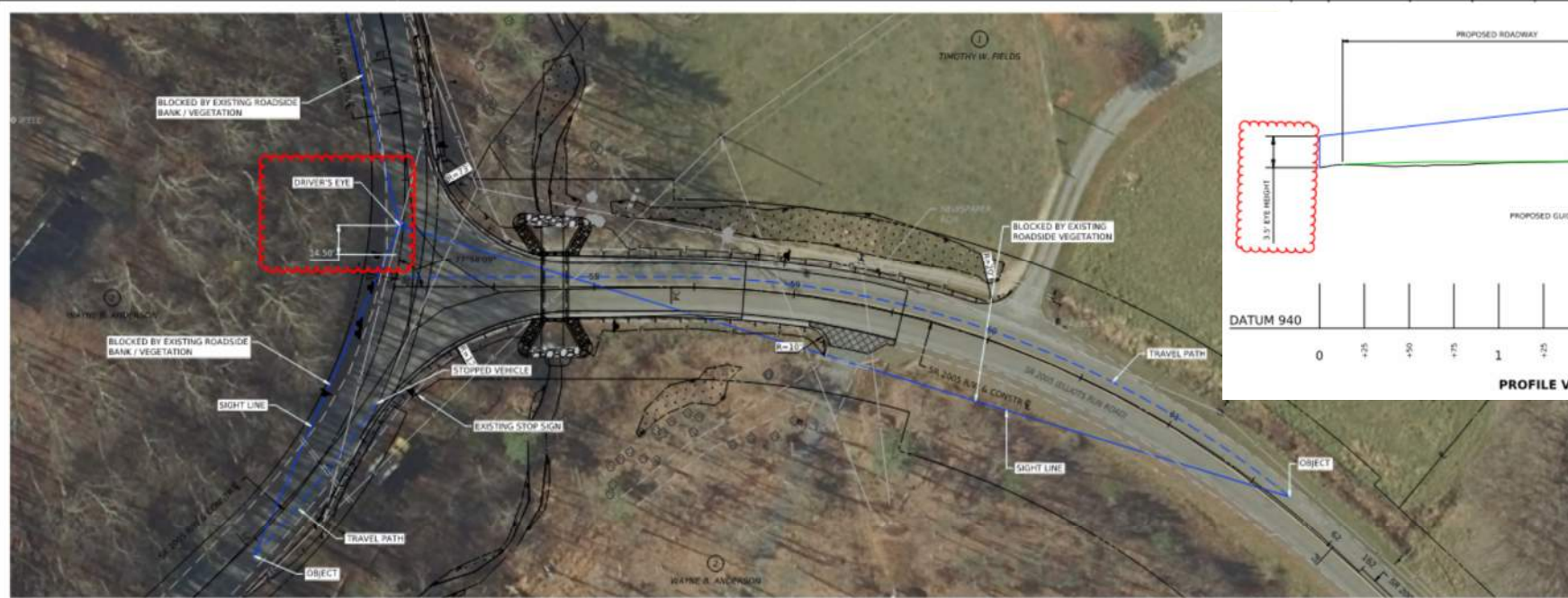
Quality Reviews

- District reviews are **cursory**
- Return revisions with **green-lines**
- Think ahead (ROW / Environmental)

Constructability

- Attention to detail

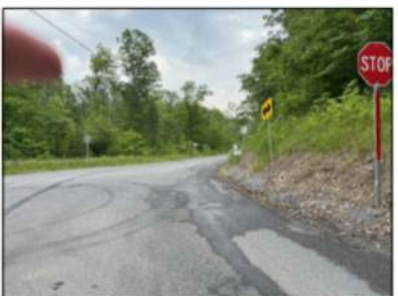
GOOD EXAMPLE



- Clear
- Complete
- Defensible



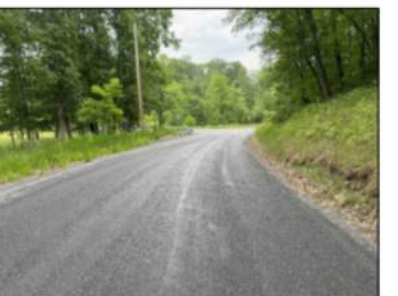
LOOKING LEFT



LOOKING RIGHT



CASE F



STOPPING SIGHT DISTANCE

SR 2005-02B INTERSECTION SIGHT DISTANCE STATION 19+69.12				
SIGHT DISTANCE	LOOKING LEFT	LOOKING RIGHT	CASE F	SSD
EXISTING	465 FT	381 FT	389 FT	210 FT
PROPOSED	465 FT	381 FT	389 FT	210 FT
REQUIRED (55 MPH)	512 FT	486 FT	478 FT	598 FT

NOTES:

- THE EXISTING SIGHT DISTANCE LOOKING LEFT FROM THE INTERSECTION IS LIMITED BY THE EXISTING ROADSIDE BANK/VEGETATION. SIGHT DISTANCE DOES NOT MEET THE DESIGN SPEED ON SR 2005 (55 MPH). IT IS ANTICIPATED VEHICLES TRAVELING ON SR 2005 WILL BE SLOWING DOWN TO NAVIGATE THE INTERSECTION.
- THE EXISTING SIGHT DISTANCE LOOKING RIGHT FROM THE INTERSECTION IS LIMITED BY THE EXISTING ROADSIDE BANK/VEGETATION. THERE IS A CLEAR SIGHT LINE TO THE STOP SIGN ON SR 2005.
- THE STOPPING SIGHT DISTANCE IS LIMITED BY THE EXISTING ROADSIDE HORIZONTAL ALIGNMENT AND BANK/VEGETATION.
- CASE F IS THE SAME AS INTERSECTION SIGHT DISTANCE AT 20+57.51. CLEAR SIGHT LINE TO THE STOP SIGN.

NOTES CONTINUED:

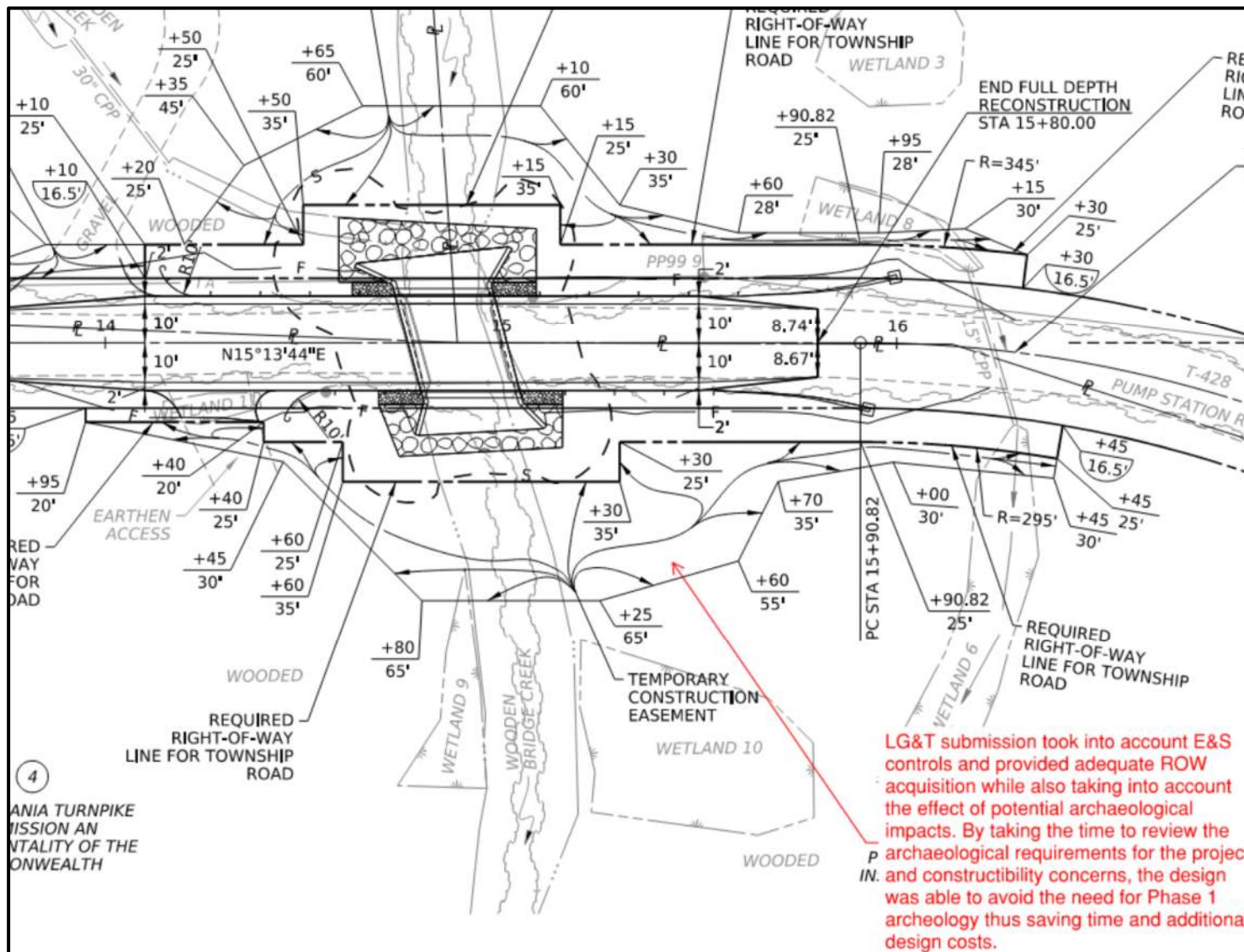
- DISTANCE FROM STOP SIGN = 14.5'
- DRIVER'S EYE HEIGHT = 3.5'
- OBJECT HEIGHT = 3.5' (2.0' FOR SSD)



INTERSECTION SIGHT DISTANCES

Safety Review Submission:
SD clearly shown in both **plan and profile**, including eye/object height and set-back from stop bar/edge of shoulder.

GOOD EXAMPLE



- Early coordination avoided Phase 1 archaeology
- Saved time and cost

WHAT CAUSES PROBLEMS

- Issues identified **too late**
- **Unclear** or incomplete responses
- **Overpromised** schedules
- **Poor coordination** (disciplines / sub-consultants)



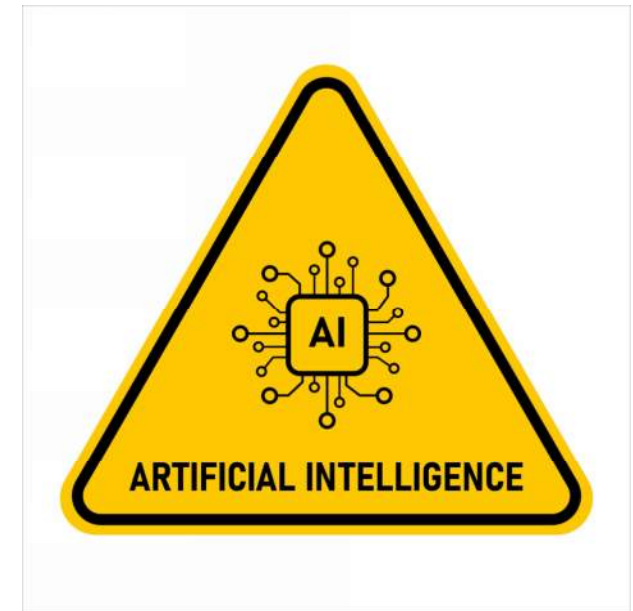
IMPROVEMENT OPPORTUNITY: AI WITHOUT REVIEW

- xix. NM discussed possibility of road diet - they mentioned they are supportive of any safety improvements in that area - 5 lane section came up but OK with 3 if all traffic data supports this.
1. GB discussed that 18 years ago we widened [REDACTED] to widen to 4 lane section to just reduce 20 years later - take a hard look at widening or squeezing in a 5th lane.
- xx. Discussion of 5 vs. 10 years history - **scoped for 10 from jump because of concern of critical mass of crashes - HSM was ALL based on 5 year -**
- xxi. JP mentioned possible road diet short term, widening long term -
- xxii. **Other Western PA examples where they do that**
- xxiii. **JP discussing left turn lane on [REDACTED] at a 4-lane template**
- xxiv. VG joined late - [REDACTED] is widened to 5 lanes - [REDACTED]
1. What's the difference to justify the change?
 2. Severity and number of crashes?

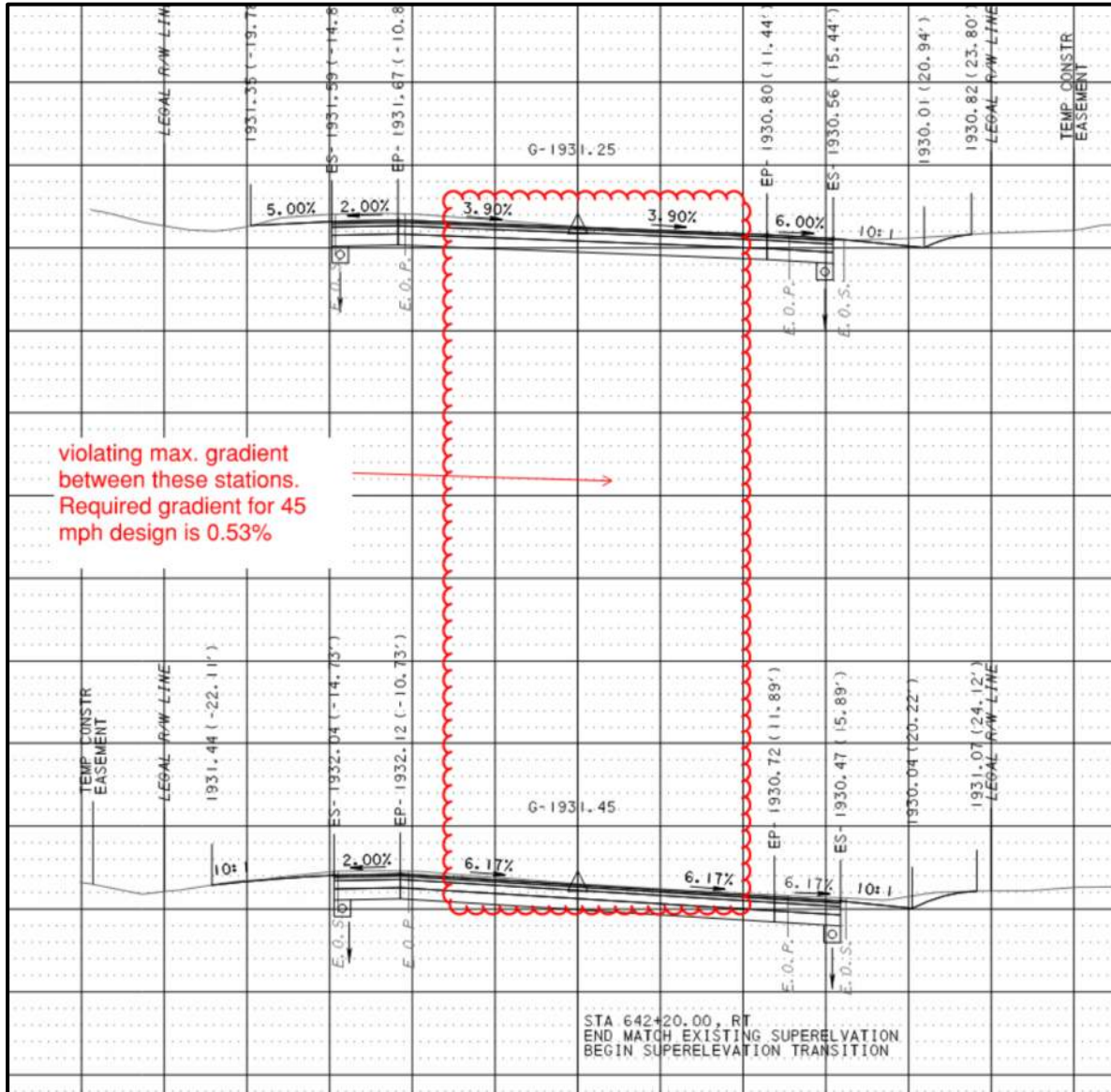
Using AI to Generate Minutes Without Proofing

- Incomplete sentences
- Grammatical errors
- Notes do not follow conversation topics
- Missing portions of **discussion**
- Does not include **final decision** on topics

You still own the output



IMPROVEMENT OPPORTUNITY: QA/QC FAILURE



Minor Project Procedures

During final design a **change was made** to the approved superlevation transitions that **no longer met the gradient requirement** for the design speed.

WHAT HELPS YOU SUCCEED

- Raise issues **early**
- Be **upfront** about risk
- Bring **solutions** – not just problems
- Think about construction from **day one**

WHAT YOU CAN EXPECT FROM US

- **Clear expectations**
- **Consistent** reviews
- **Open** communication
- Willingness to **improve**

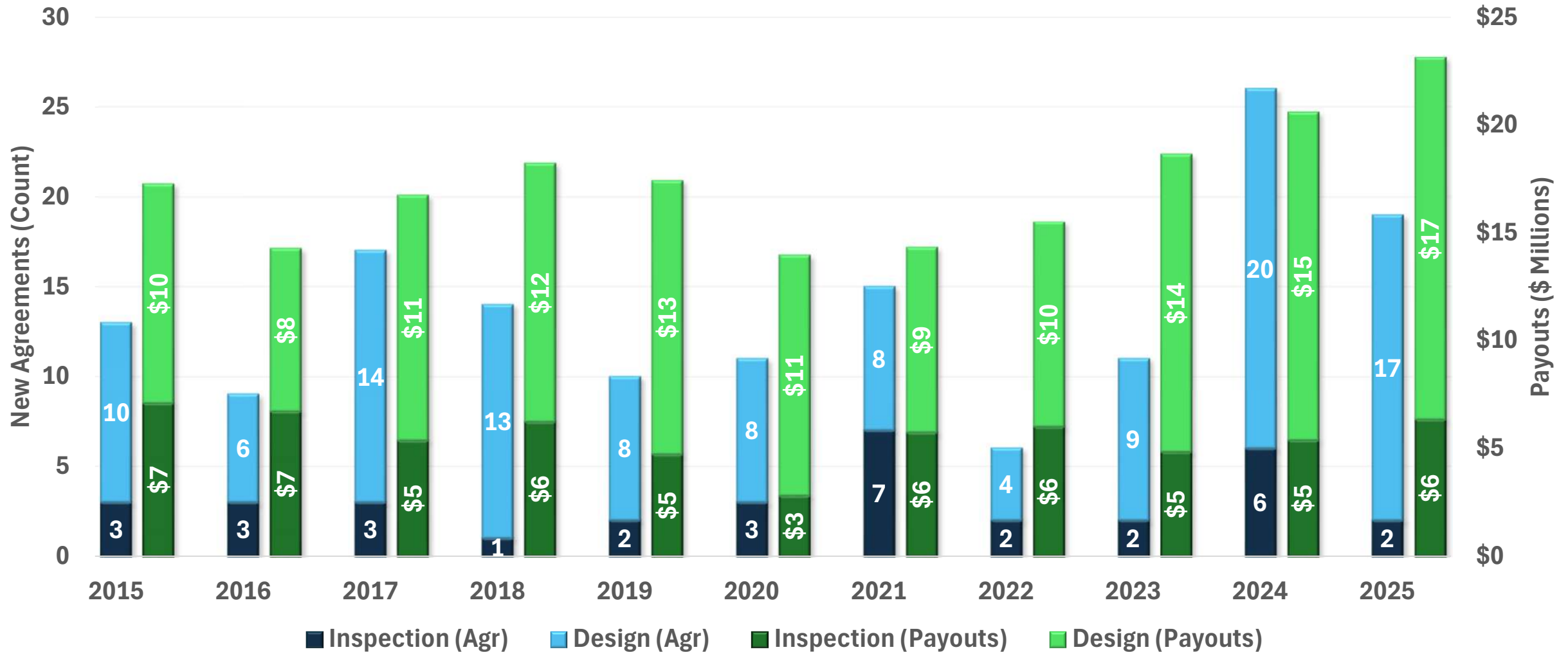
2026 Consultant Opportunities



Pennsylvania
Department of Transportation

ANNUAL CONSULTANT AGREEMENT SNAPSHOT

District 9: New Consultant Agreements & Payouts



CONSULTANT SELECTIONS

District Selection Strategies for 2026:

- Non-Project Specific Open End Agreements:
 - 1 Engineering/Environmental
 - 1 Construction Inspection
- Project Specific/PS Open End Agreements (Project Summary):
 - 1 Roadway Project
 - 7 Bridge Replacement Projects (Includes 2 local bridges at the request of the Sponsor)
 - 1 Bridge Rehabilitation
- Grouping Agreements w/ similar scope for advertisement and selection of multiple agreements from one SOI:
 - 6 of the 7 Bridge Replacement Agreements will be advertised in 2 groups
(No Multi-Bridge PS Agreements this year)

2026 State Agreements/Projects:

- 1 Engineering/Environmental Open End
 - 1 Construction Inspection Open End
 - 7 Project Specific Structure Agreements w/ 1 Bridge Project on Each
 - 1 Project Specific Roadway Open-End Agreement
 - 1 Project Specific Structure Open-End Agreement
-

11 Total Agreements → 7 Advertisements

DISTRICT WIDE AGREEMENTS

1 – Engineering/Environmental Open End

- Engineering Emphasis
- \$3 Million
- Advertisement: 3rd Quarter 2026
- Execution Anticipated: 4th Quarter 2026

1 - Inspection Open End Agreement

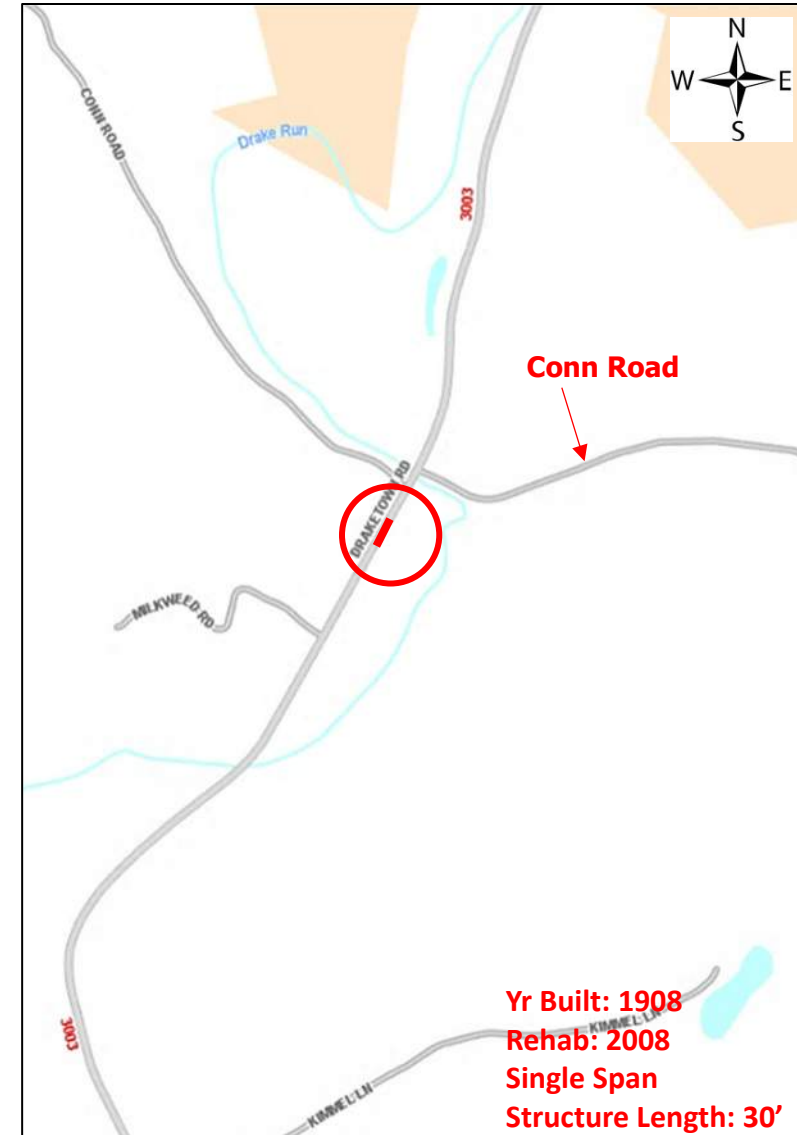
- Inspection Emphasis
- \$3 Million
- Advertisement & Execution Anticipated: 2nd Quarter 2027

Single Bridge Agreements

2 Group Advertisements



STATE ROUTE 3003 OVER DRAKE RUN



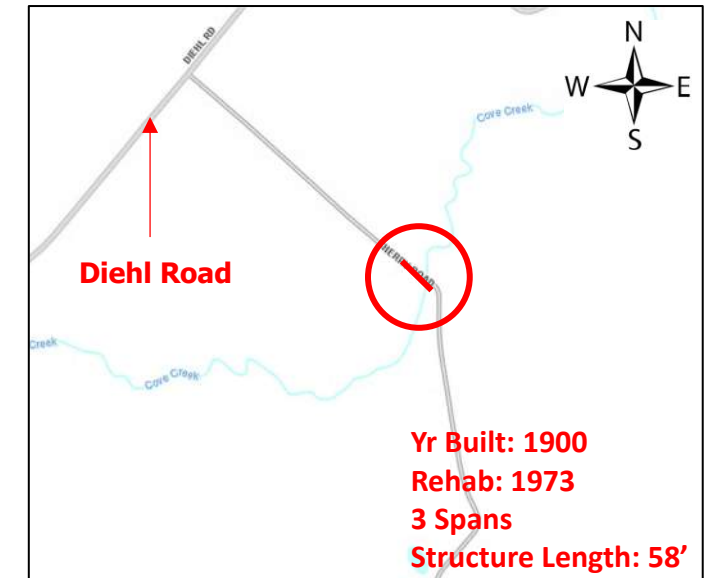
- **Project Type:** Bridge Replacement
- **Location:** State Route 3003 (Drake Town Run) over Drake Run near the intersection of T-393 (Conn Road) in Lower Turkeyfoot Township, Somerset County
- **Construction Estimate:** \$1.0 Million - \$5.0 Million
- **Anticipated Construction Year:** 2030

T-373 OVER COVE CREEK



BMS: 05 7204 0373 4001

- **Project Type:** Bridge Replacement
- **Location:** T-373 (Sherry Road) over Cove Creek in Colerain Township, Bedford County.
- **Construction Estimate:** \$1.0 Million - \$5.0 Million
- **Anticipated Construction Year:** 2031



STATE ROUTE 4008 OVER GLENWHITE RUN



- **Project Type:** Bridge Replacement
- **Location:** State Route 4008 (Veterans Memorial Highway) over Glenwhite Run in Logan Township, Blair County
- **Construction Estimate:** \$1.0 Million - \$5.0 Million
- **Anticipated Construction Year:** 2032

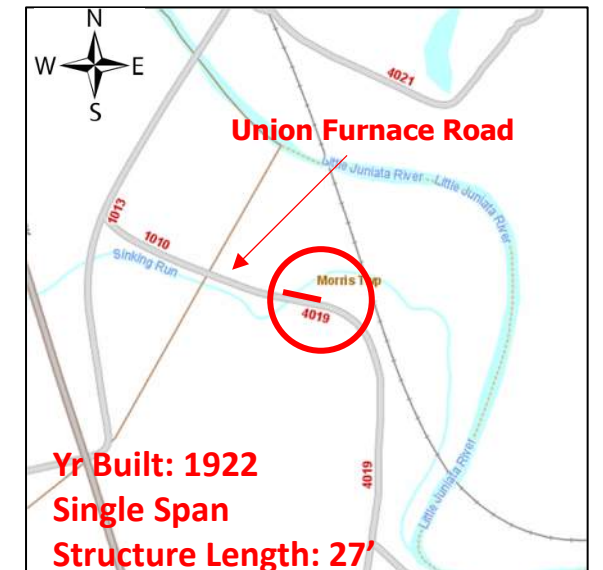


STATE ROUTE 4019 OVER ARCH SPRING RUN



BMS: 31 4019 0012 1711

- **Project Type:** Bridge Replacement
- **Location:** State Route 4019 over Arch Spring Run in Morris Township, Huntingdon County
- **Construction Estimate:** Less than \$1.0 Million
- **Anticipated Construction Year:** 2032



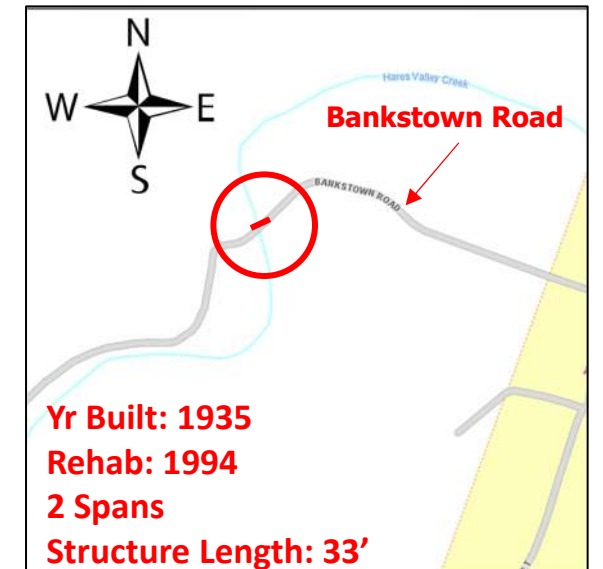
Yr Built: 1922
Single Span
Structure Length: 27'

T-420 OVER HARES VALLEY CREEK



BMS: 31 7226 0421 4010

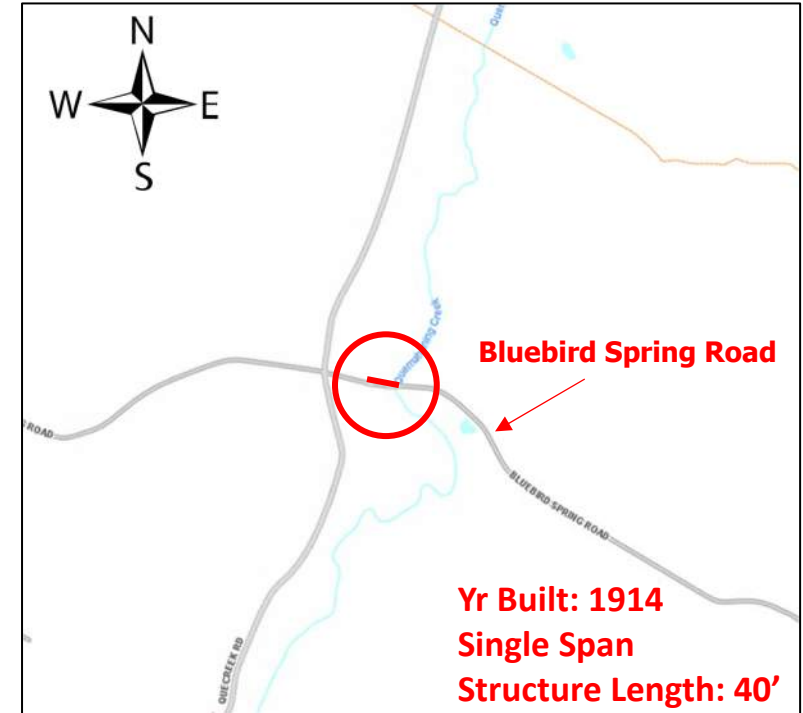
- **Project Type:** Bridge Replacement
- **Location:** T-420 over Hares Valley Creek in Union Township, Huntingdon County
- **Construction Estimate:** \$1.0 Million - \$5.0 Million
- **Anticipated Construction Year:** 2032



STATE ROUTE 4004 OVER QUEMAHONING CREEK



BMS: 55 4004 0032 0000



- **Project Type:** Bridge Replacement
- **Location:** 4004 (Bluebird Spring Road) over Quemahoning Creek in Lincoln Township, Somerset County
- **Construction Estimate:** \$1.0 Million - \$5.0 Million
- **Anticipated Construction Year:** 2032

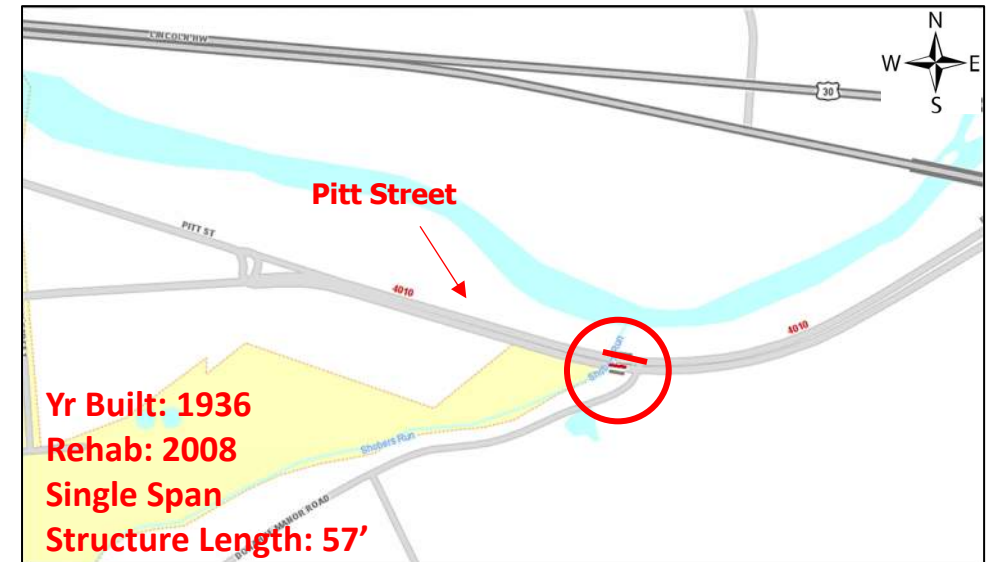
Single Bridge Agreement / Advertisement



STATE ROUTE 4010 OVER SHOBERS RUN



- **Project Type:** Bridge Replacement
- **Location:** State Route 4010 (Pitt Street) over Shobers Run in Bedford Township, Bedford County
- **Construction Estimate:** \$5.0 Million - \$10.0 Million
- **Anticipated Construction Year:** 2032



Project Specific Open End Agreement (Roadway)



US 30 – T-496 TO STATE ROUTE 4010



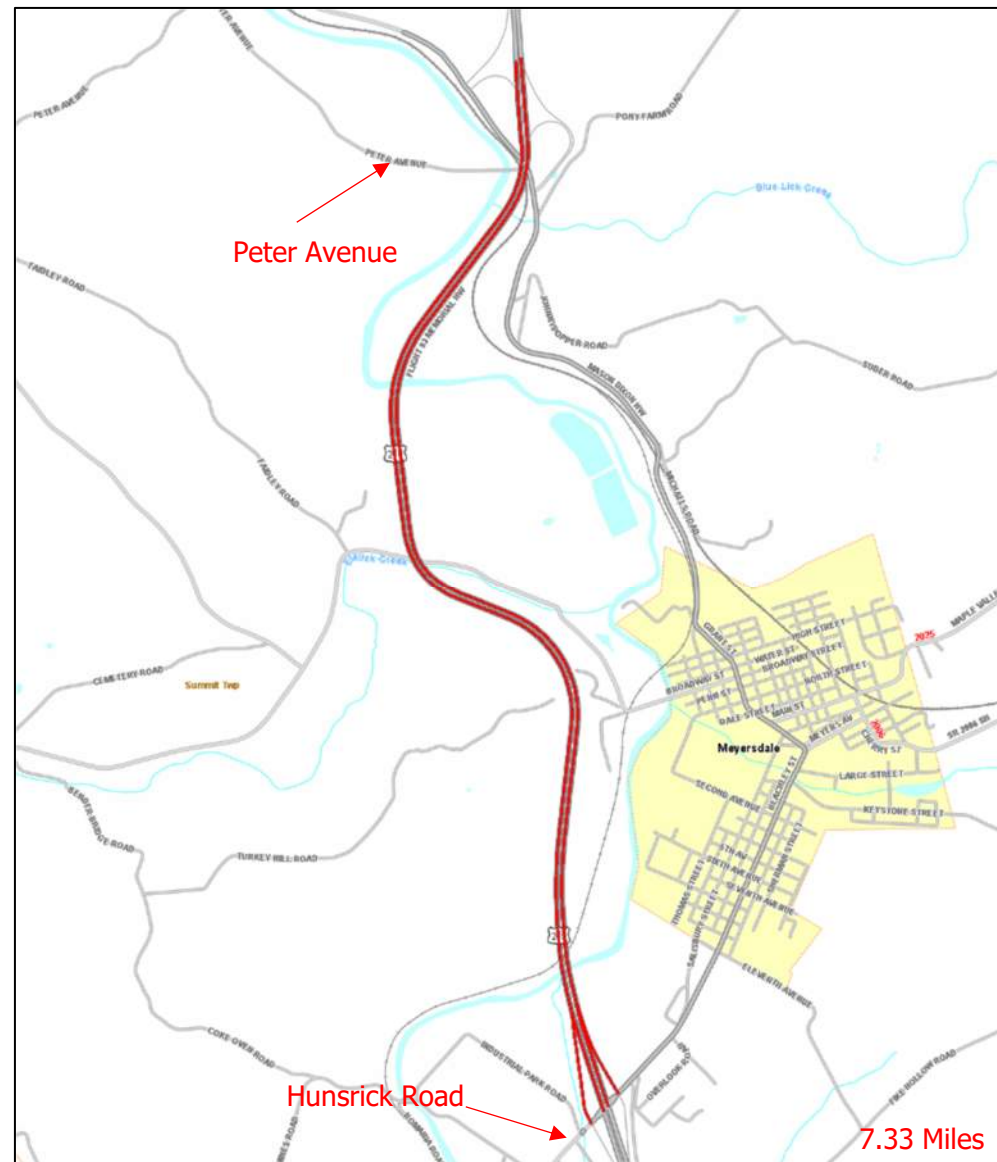
- **Project Type:** Resurfacing
- **Location:** US 30 from T-496 (Ponderosa Road) to State Route 4010 in Napier and Bedford Townships, Bedford County
- **Construction Estimate:** \$5.0 Million - \$10.0 Million
- **Anticipated Construction Year:** 2031



US 219 - S. MEYERSDALE INT TO N. MEYERSDALE INT



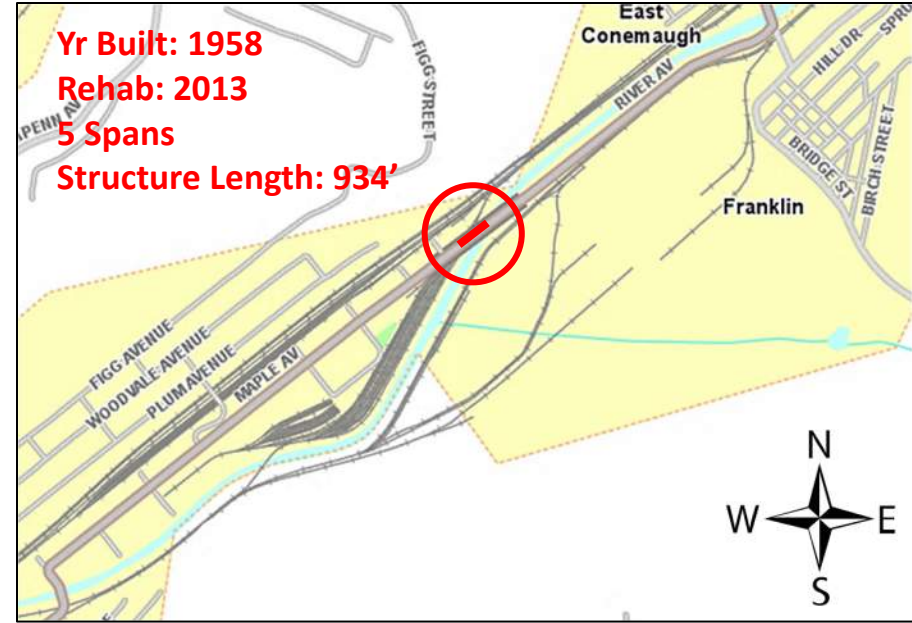
- **Project Type:** Resurfacing
- **Location:** US 219 (Mason Dixon Highway/Flight 93 Memorial Highway) from the South Meyersdale Interchange to the North Meyersdale Interchange in Summit Township
- **Construction Estimate:** \$5.0 Million - \$10.0 Million
- **Anticipated Bid Year:** 2032



Project Specific Open End Agreement (Bridge)



PA 271 TRUSS OVER LITTLE CONEMAUGH RIVER



- **Project Type:** Bridge Rehabilitation
- **Location:** On PA 271 (Maple Avenue) over Little Conemaugh River in the City of Johnstown
- **Construction Estimate:** \$5.0 - \$10.0 Million
- **Anticipated Construction Year:** 2031

Questions

