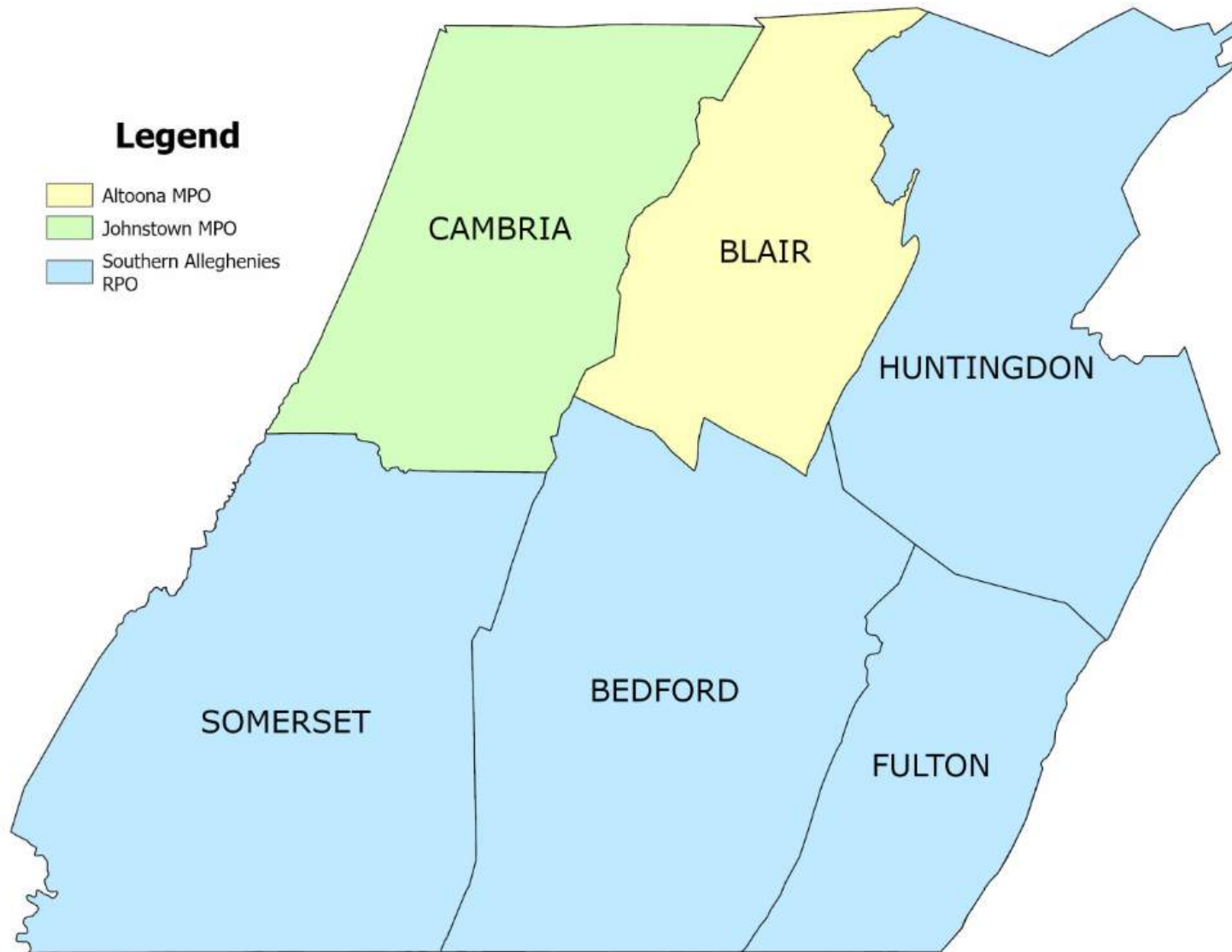


DISTRICT 9 ASHE WORKSHOP APRIL 23, 2026



**VINCENT GREENLAND, PE
DISTRICT EXECUTIVE**

DISTRICT 9: OVERVIEW



- 6 Counties
- 883 Employees
- Bridges
 - 2,100 State Bridges
 - 2.0% Poor Deck Area
 - 465 Local Bridges
 - 19.0% Poor Deck Area
- 4,004 Miles of Roadway
 - 15.4% Poor IRI



2027 PROGRAM OVERVIEW & CHALLENGES

ASSET CONDITION

State Route System

	Statewide	Districtwide	Southern Alleghenies	Cambria County	Blair County
Poor IRI, miles (%)	9,637 (22.0%)	604 (15.0%)	466 (17.3%)	104 (14.0%)	34 (6.0%)
Poor Bridge, # (%)	2,057 (8.1%)	107 (5.1%)	96 (6.6%)	6 (1.8%)	5 (1.5%)

Additional Statistics

Bridges Districtwide

- Total: 2,100
- Average Age: 50 years

Roadways Districtwide

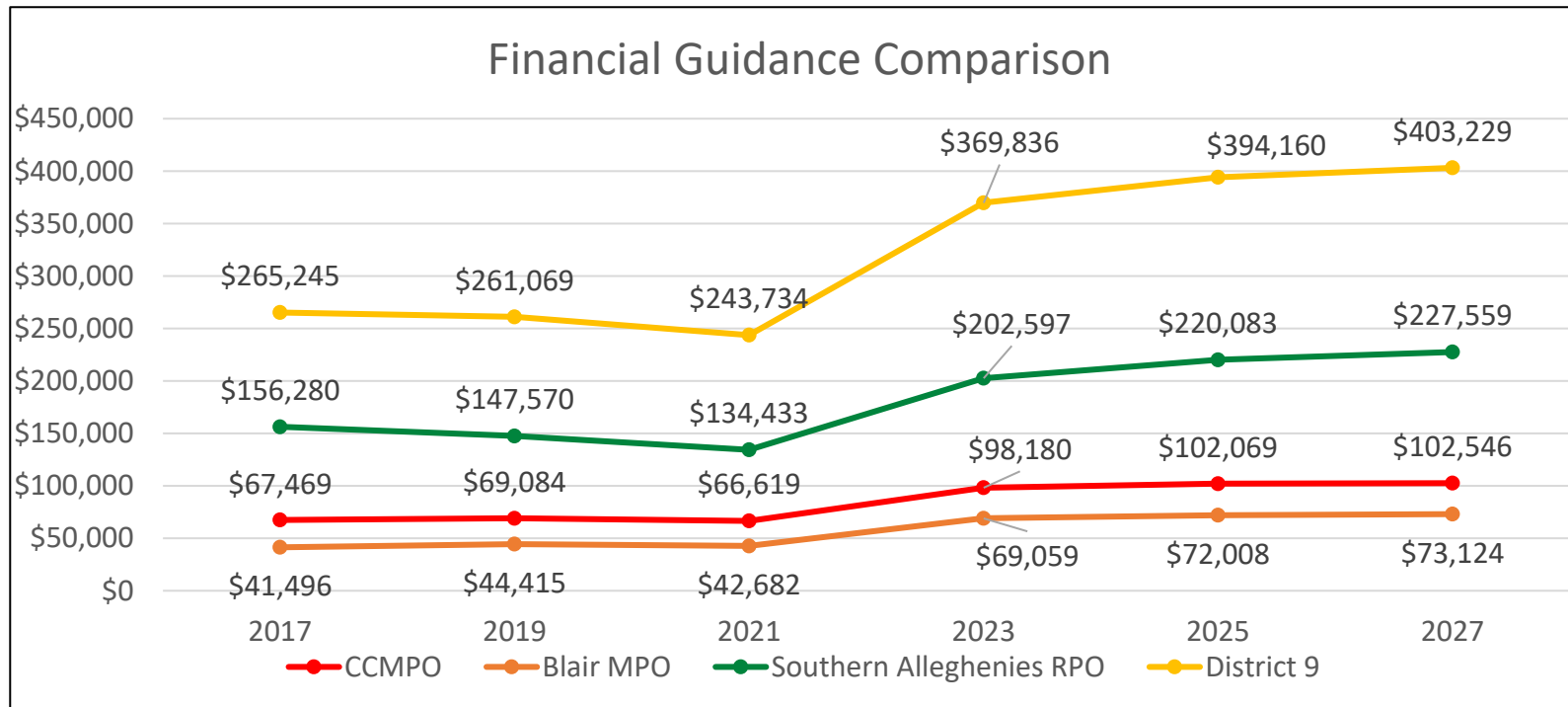
- Total Miles: 4,004
- Average Year Built: 1952
- Average Resurfacing Year: 2014

*The 2 oldest state bridges in District 9 are masonry stone arches that carry Route 53 in Cambria County. Both were built in 1832 and rehabbed in 2019 and 2020. Neither are in Poor condition.



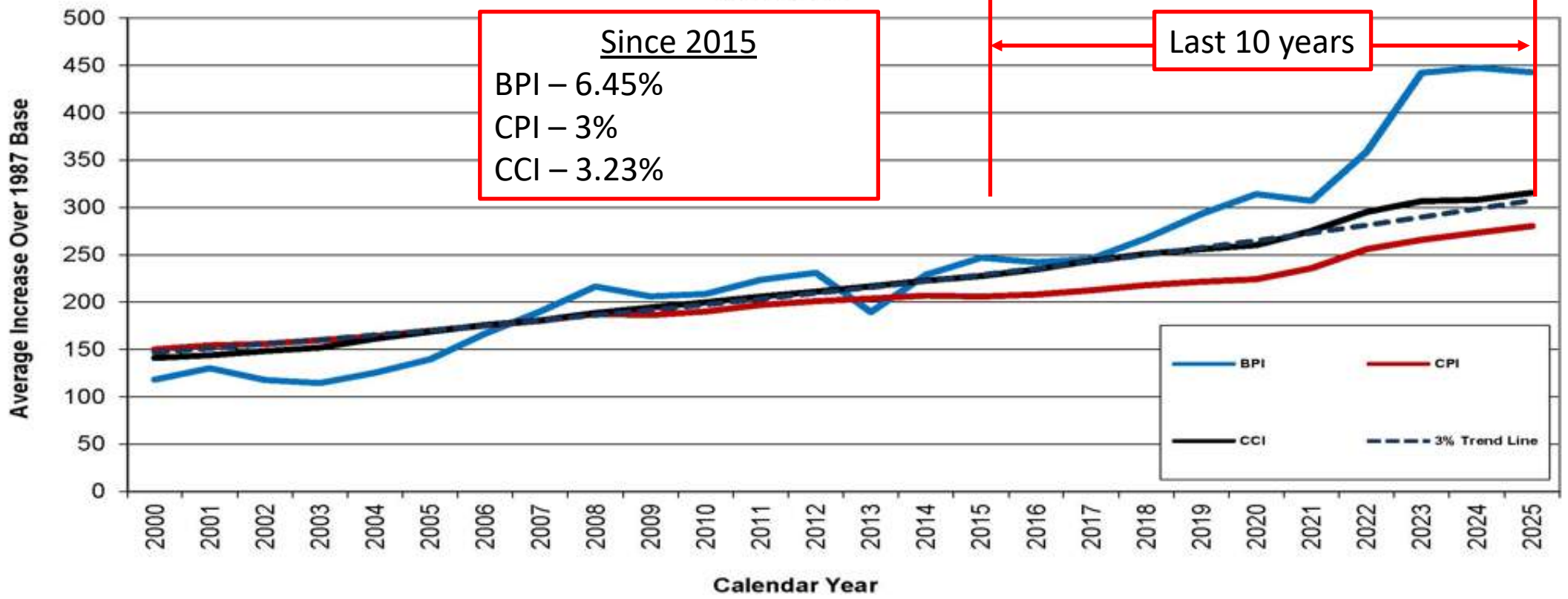
TIP FINANCIAL GUIDANCE COMPARISON

Planning Region	2017 TIP (000's)	2019 TIP (000's)	2021 TIP (000's)	BIL			2025-2027 TIP Difference	
				2023 TIP (000's)	2025 TIP (000's)	2027 TIP (000's)	\$ (000's)	%
CCMPO	\$ 67,469	\$ 69,084	\$ 66,619	\$ 98,180	\$ 102,069	\$ 102,546	\$ 477	0.5%
Blair MPO	\$ 41,496	\$ 44,415	\$ 42,682	\$ 69,059	\$ 72,008	\$ 73,124	\$ 1,116	1.5%
S Alleghenies RPO	\$ 156,280	\$ 147,570	\$ 134,433	\$ 202,597	\$ 220,083	\$ 227,559	\$ 7,476	3.4%
District 9-0	\$ 265,245	\$ 261,069	\$ 243,734	\$ 369,836	\$ 394,160	\$ 403,229	\$ 9,069	2.3%



INFLATION INDICIES

Inflation Indices - 2000 to 2025
thru 12/31/2025



TYPICAL SMALL BRIDGE PROJECT

The Cost to make a Project Shovel Ready:

Avg Construction: \$1,000,000

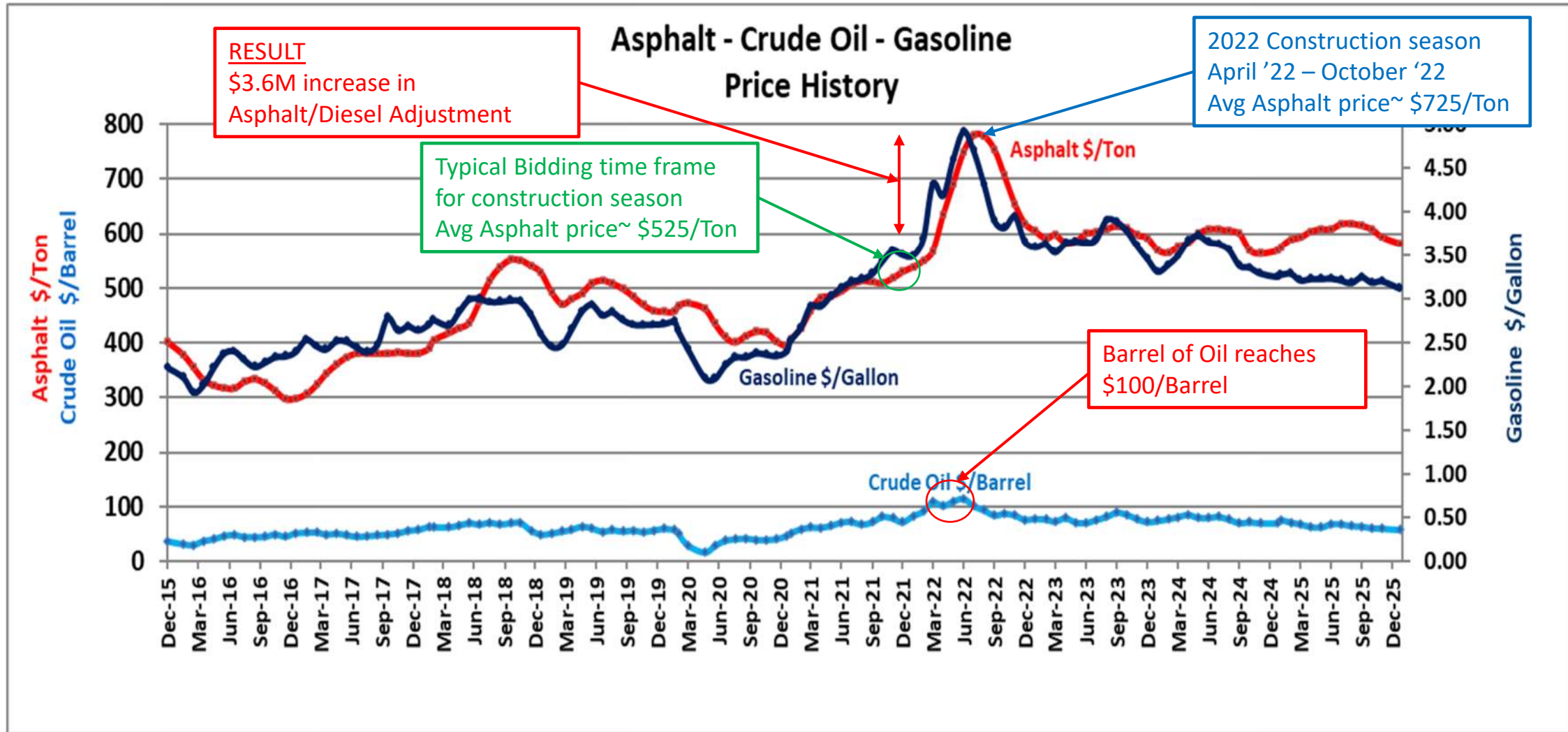
GV2

Average Pre-Construction Costs:

- Preliminary Engineering: \$250k - \$300K
- Final Design: \$170k - \$200K
- Utilities/ROW Acquisition: \$20k - \$50k
- Inspection/WO/Management: \$120k - \$150k
- Average Total: 65% (\$560k - \$700k)

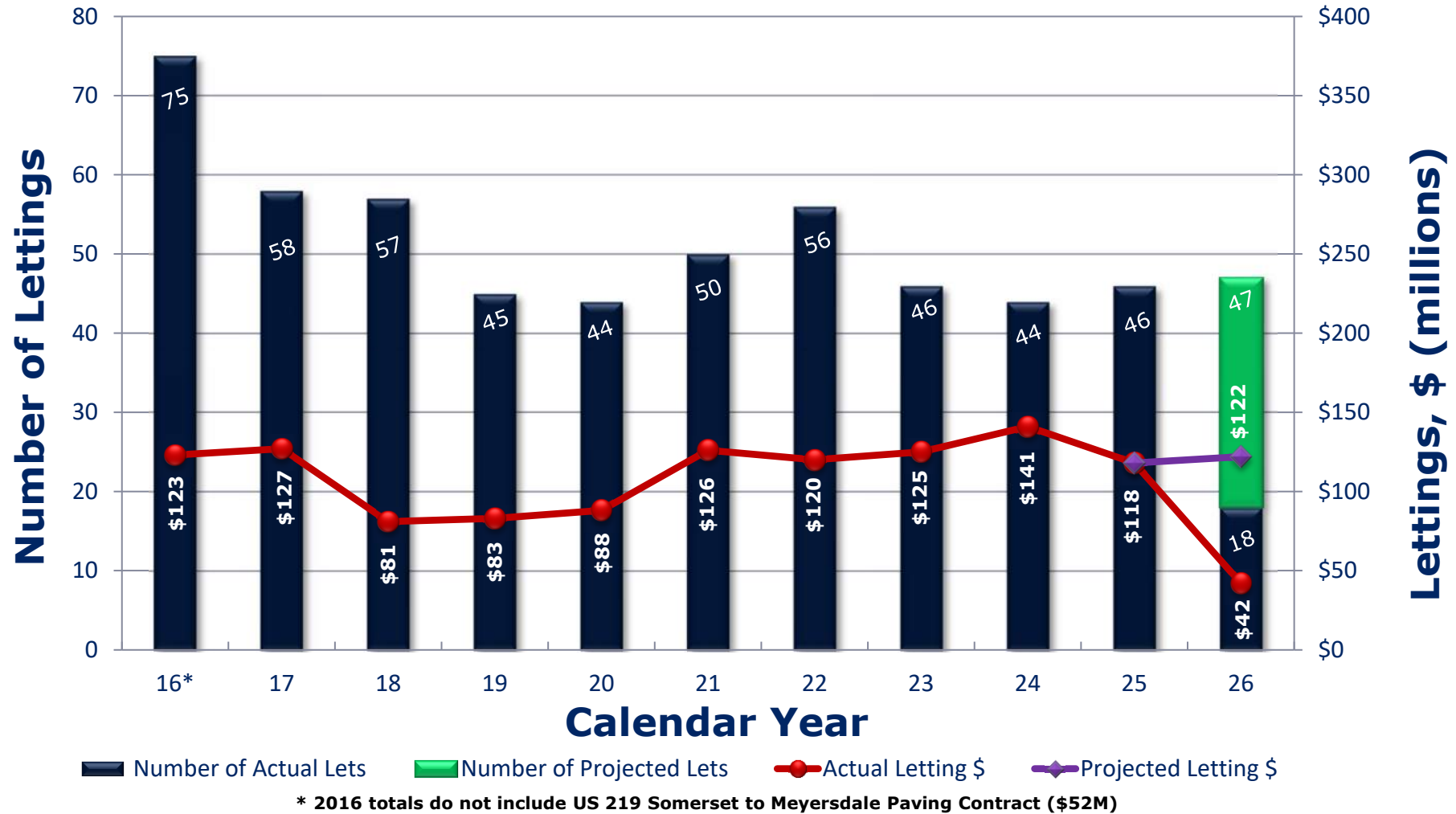


ASPHALT – CRUDE OIL – GASOLINE



DISTRICT 9-0 PROJECT LETTINGS

PJT3

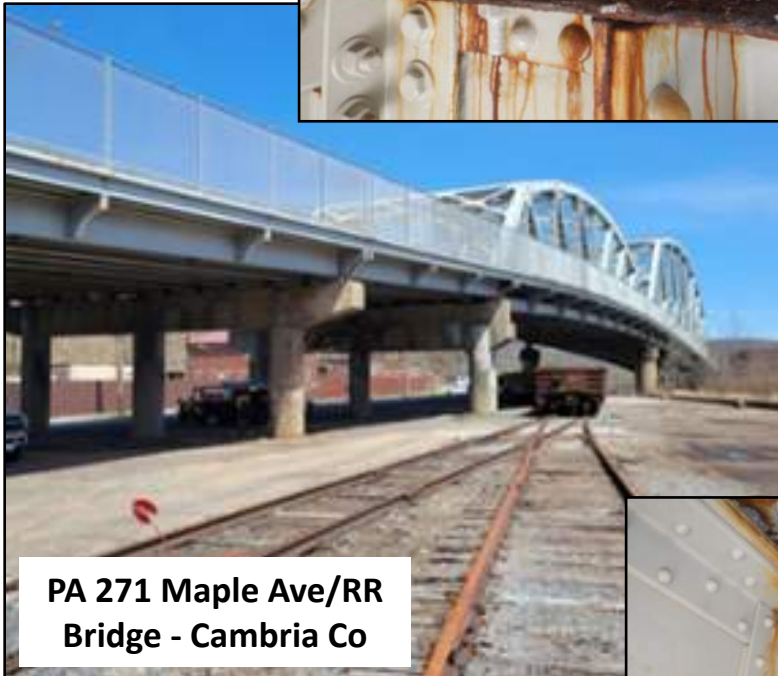


Bridge Challenges

LONG TERM PLANNING - MAJOR BRIDGES



- 56 State-owned major bridges
 - 2.67% of State-owned Bridges
 - 28% of Deck Area
- 6 bridges (10.7%) will be reaching the end of useful life within the next 10 years



PA 271 Maple Ave/RR
Bridge - Cambria Co

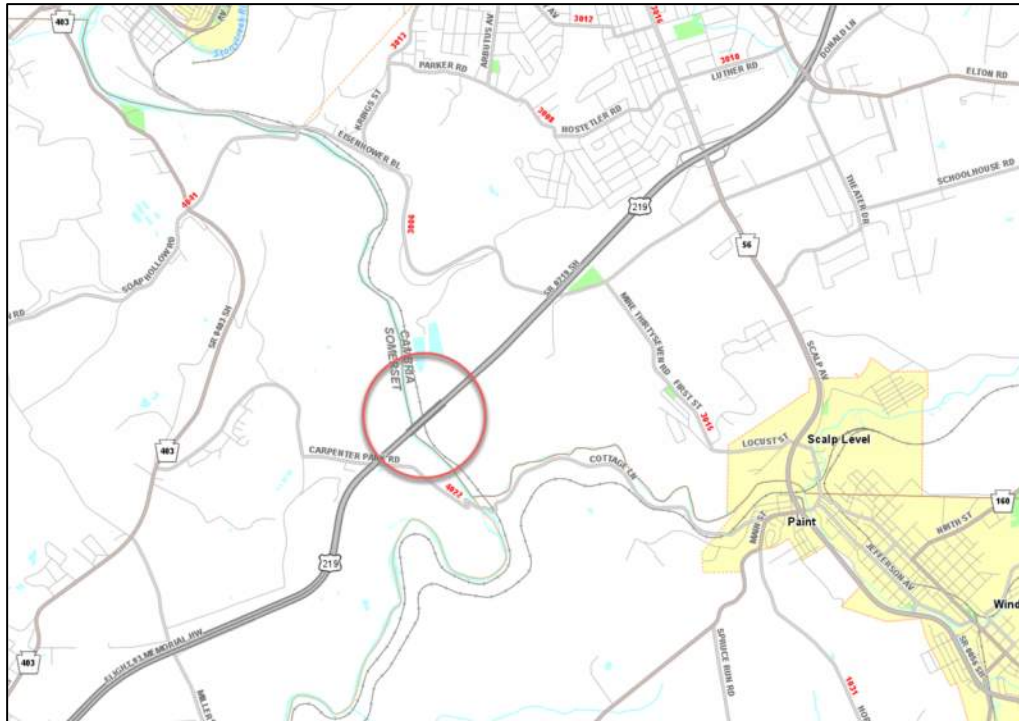


US 22 Alfarata Bridge - Huntingdon Co

MCNALLY BRIDGE STUDY

U.S. 219 over CSX Railroad and Stonycreek River

- Conemaugh Township, Somerset County
- Richland Township, Cambria County
- **Estimated Cost:** \$700,000
- **Estimated Study Completion:** 2026



Replacement Cost Estimate: \$70M to \$80M



STATE OWNED 8TH ST BRIDGE



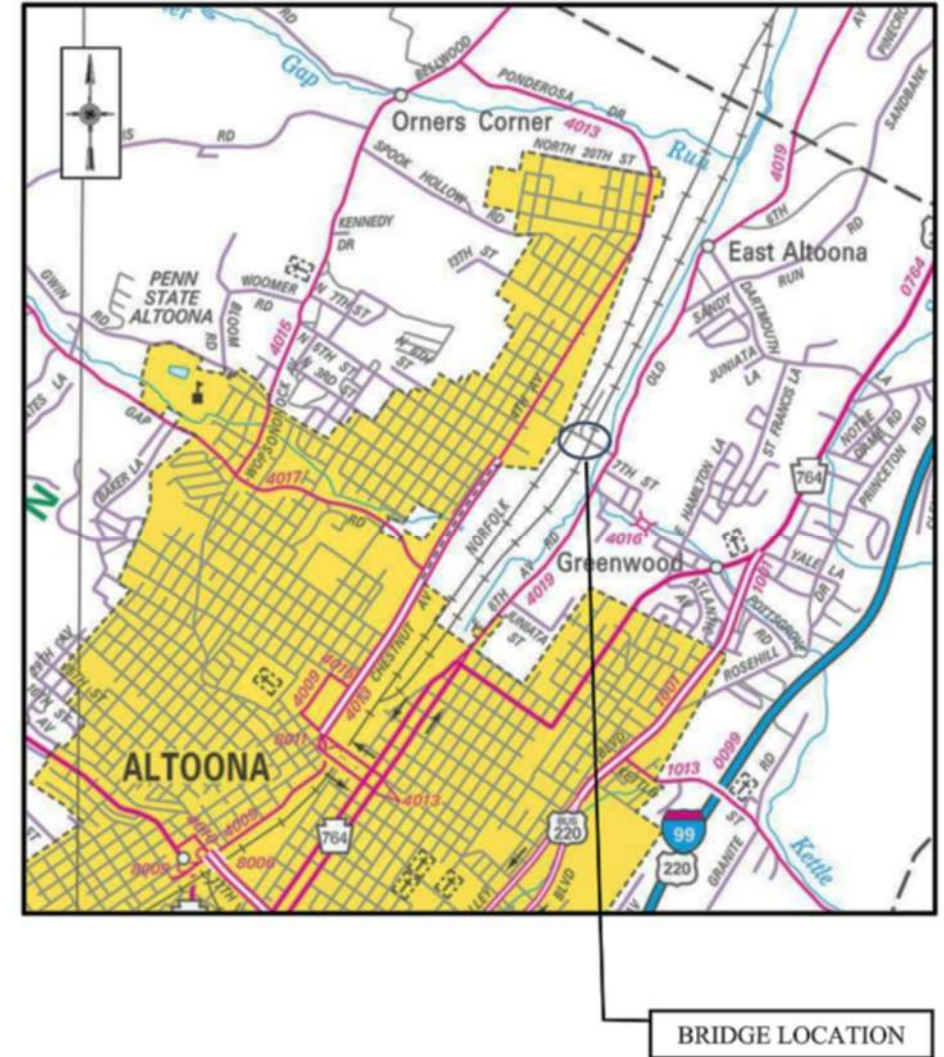
Replacement Cost Estimate: \$20M to \$25M

- **Features:**
 - Over 8th Ave/10th Ave/Norfolk Southern RR – Blair Co
 - Length: 802'
 - Spans - 9
 - Width: 32'
 - Traffic Volume: 6,973 vehicles per day

BLAIR COUNTY NORTH 8TH STREET BRIDGE



- **Location:** Carrying 8th Street Over Norfolk Southern RR in Juniata
- **Current Status:** Load Posting of 29/33 Tons with June 2024 Inspection
- Full/Superstructure Replacement
- **Anticipated Study Cost :** \$600,000
- **Anticipated Study Completion:** 2026

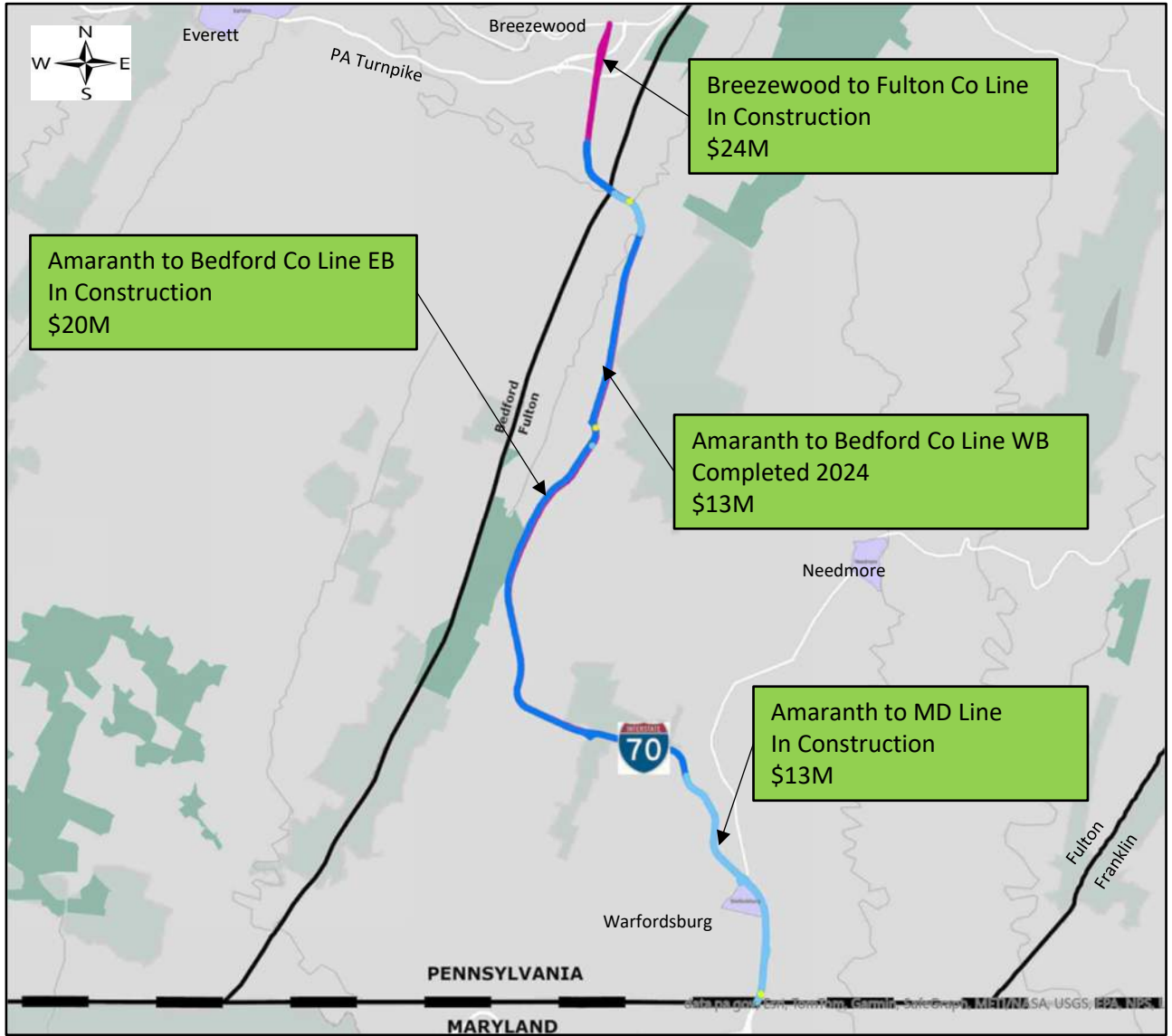


BLAIR COUNTY NORTH 8TH STREET BRIDGE



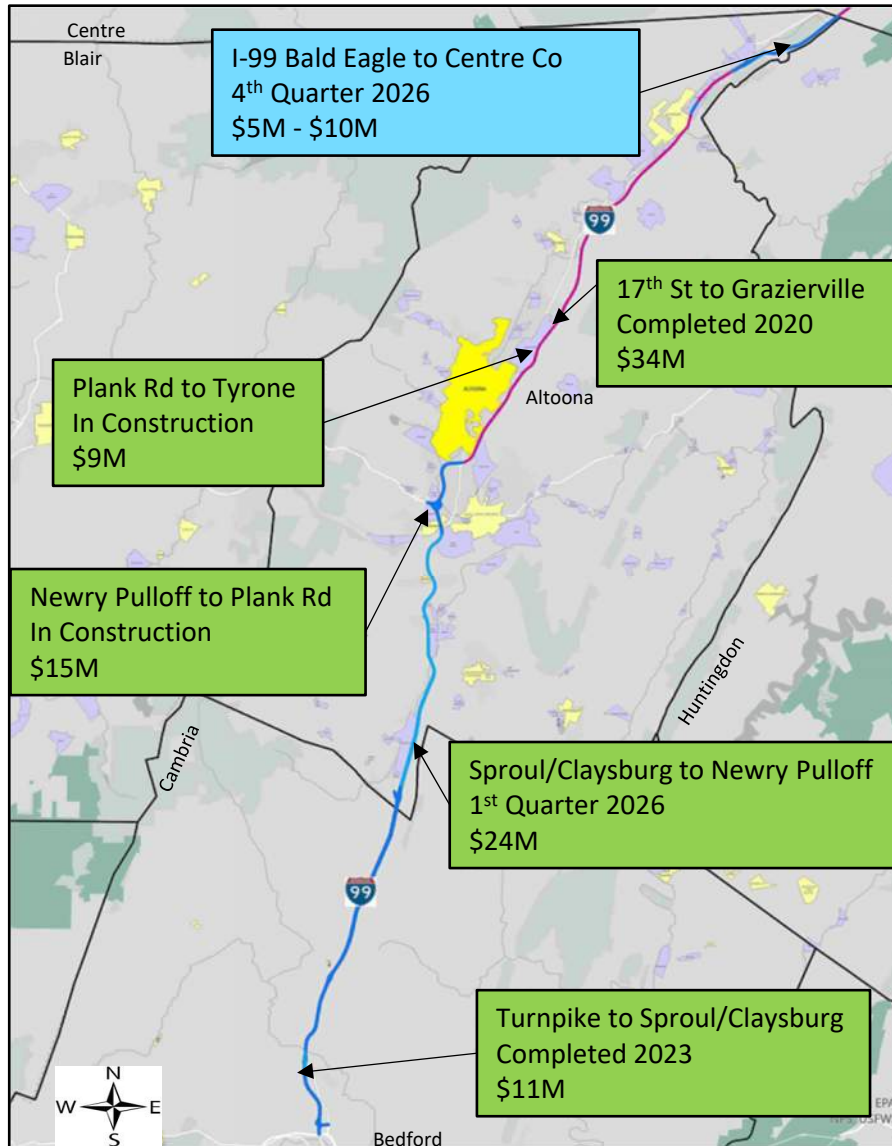
Roadway Challenges

I-70 CORRIDOR INVESTMENTS



Total Investments: \$70M

I-99 CORRIDOR INVESTMENTS

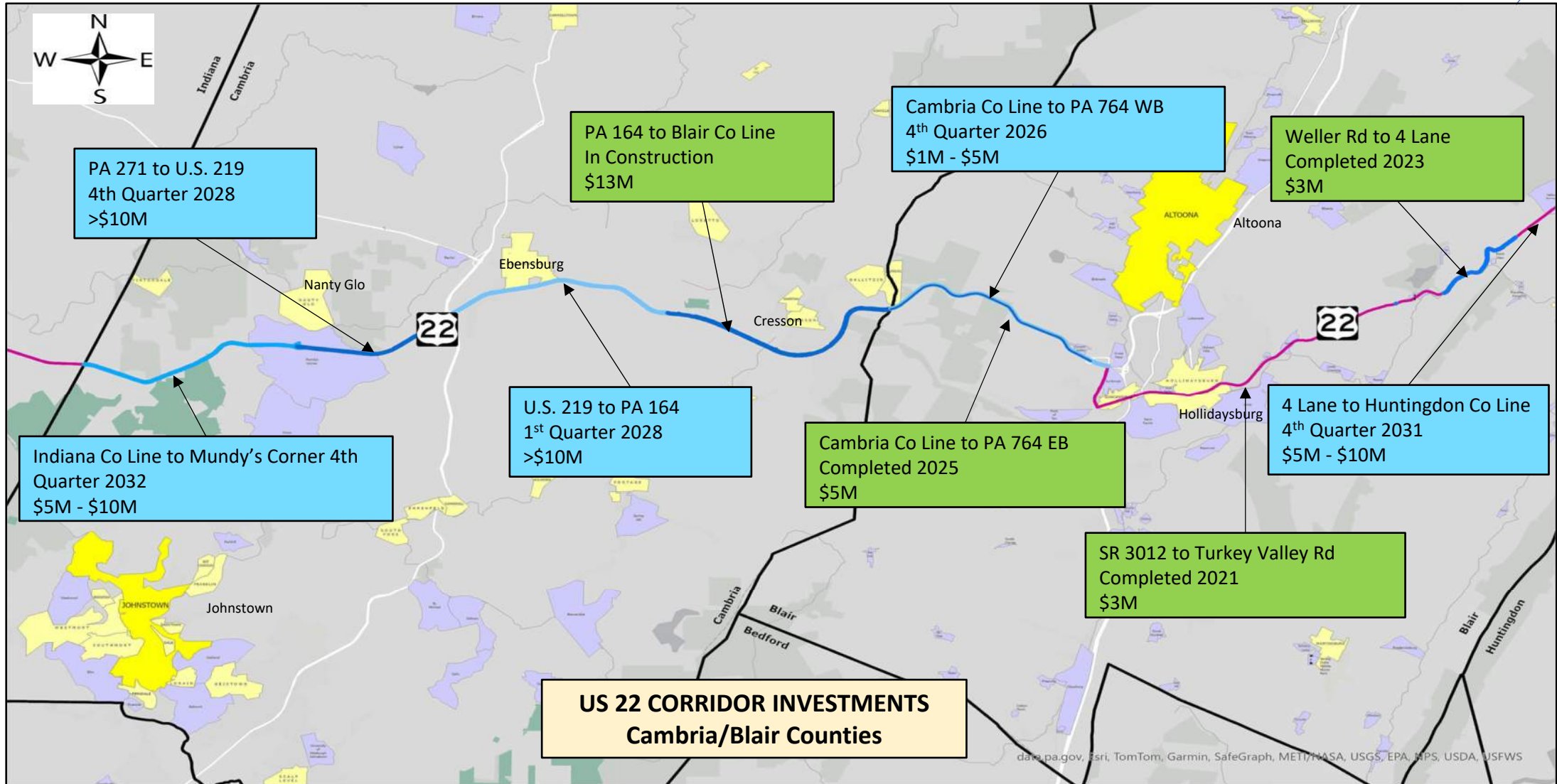


Previous Investments: \$93M

Programmed Investments: \$5M - \$10M

Total Investments: \$98M - \$103M

U.S. 22 CORRIDOR INVESTMENTS

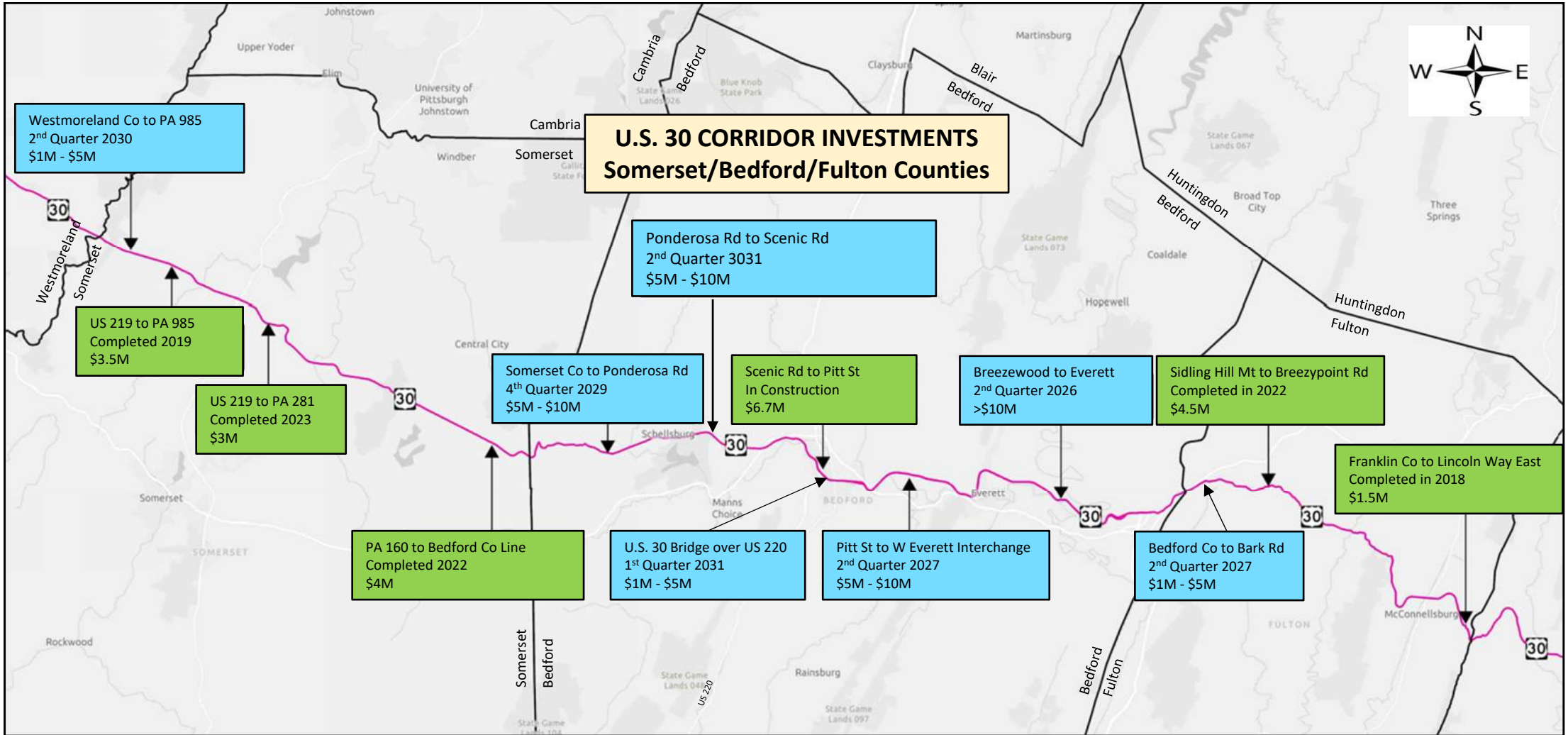


Previous Investments: \$24M

Programmed Investments: \$40M - \$45M

Total Investments: \$64M - \$69M

U.S. 30 CORRIDOR INVESTMENTS



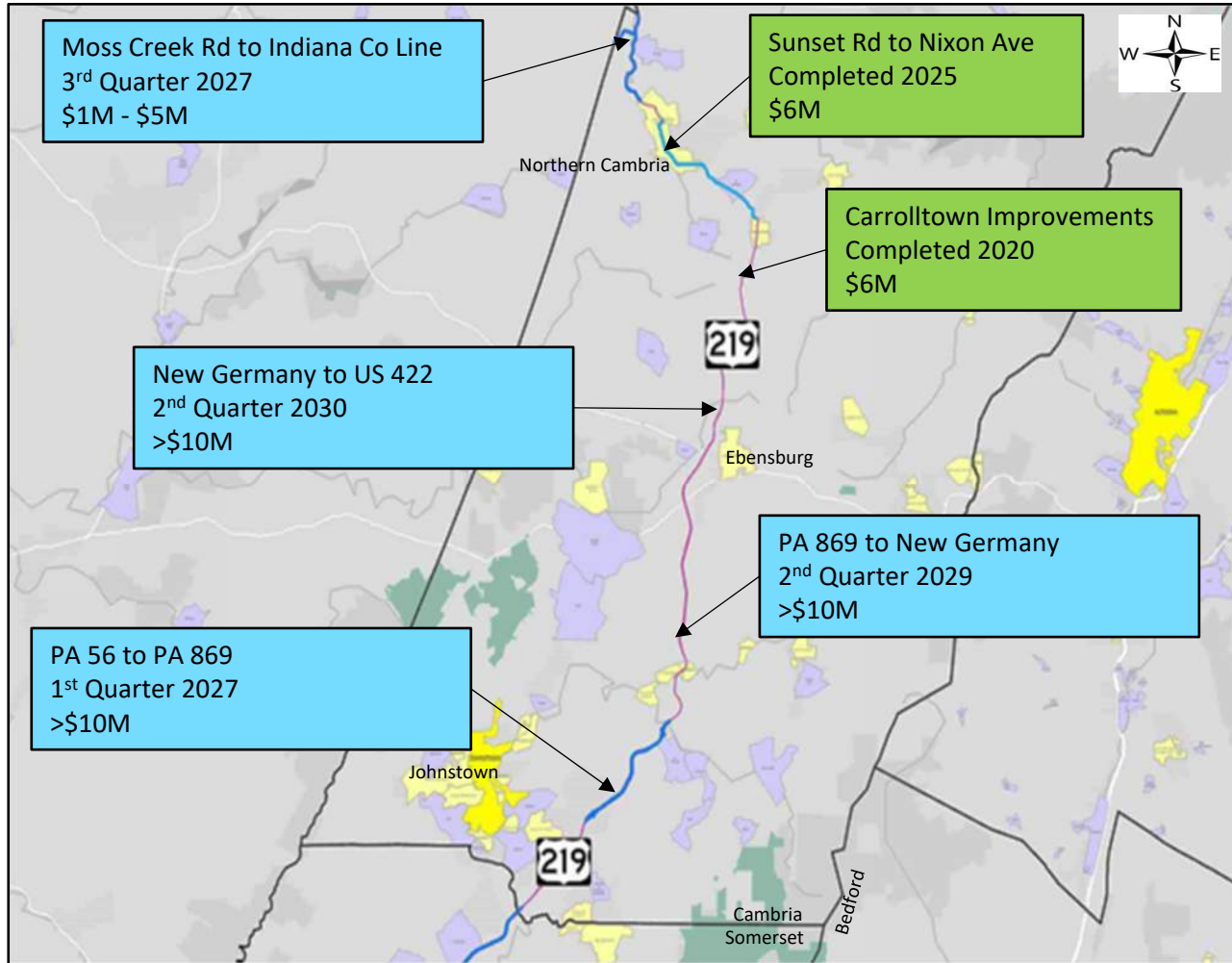
Previous Investments: \$23M

Programmed Investments: \$45M - \$50M

Total Investments: \$68M - \$73M



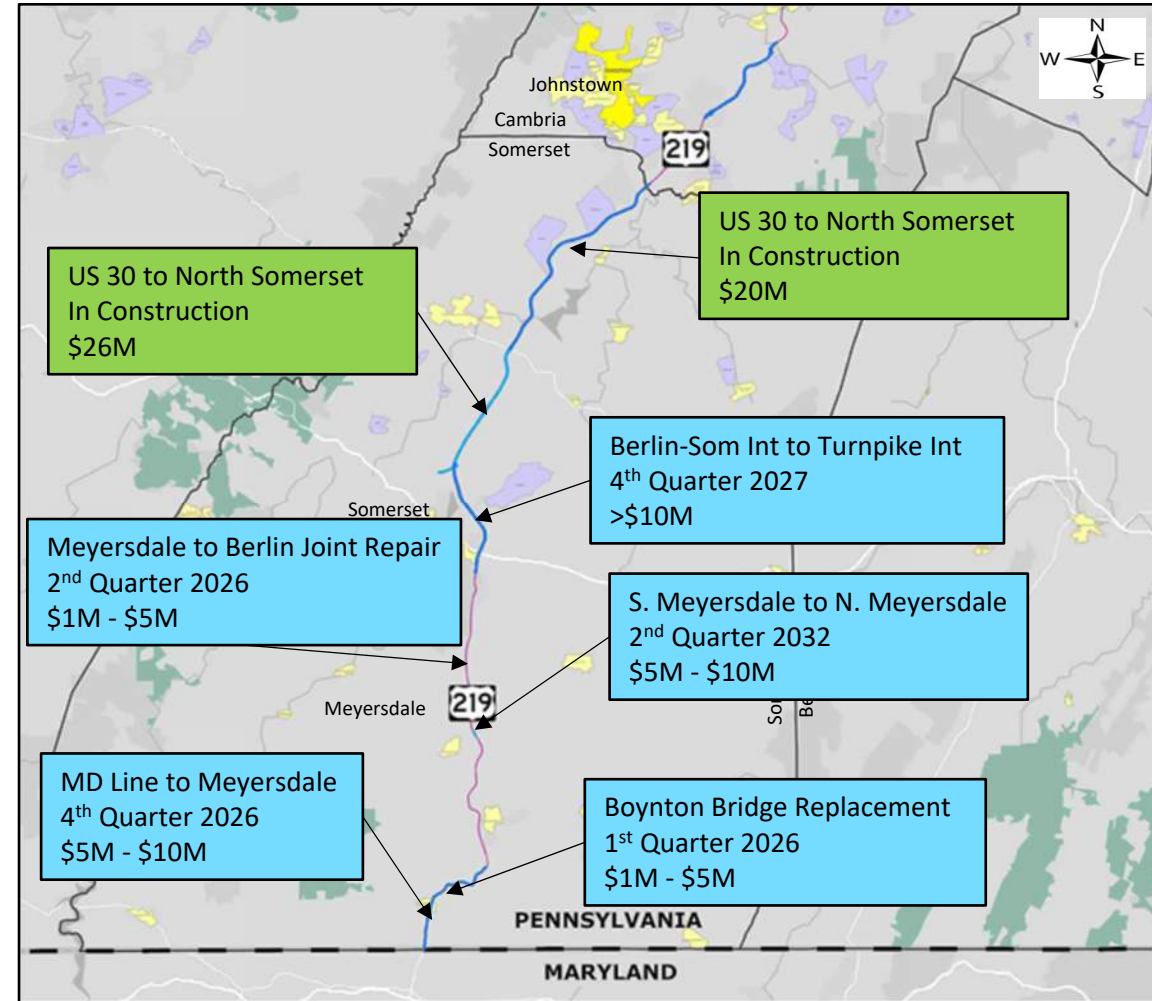
U.S. 219 CORRIDOR INVESTMENTS



CAMBRIA COUNTY

Previous Investments: \$52M

Programmed Investments: \$82M - \$92M



SOMERSET COUNTY

Total Investments: \$134M - \$144M

2025 SALT PRICE & WINTER EXPENDITURES

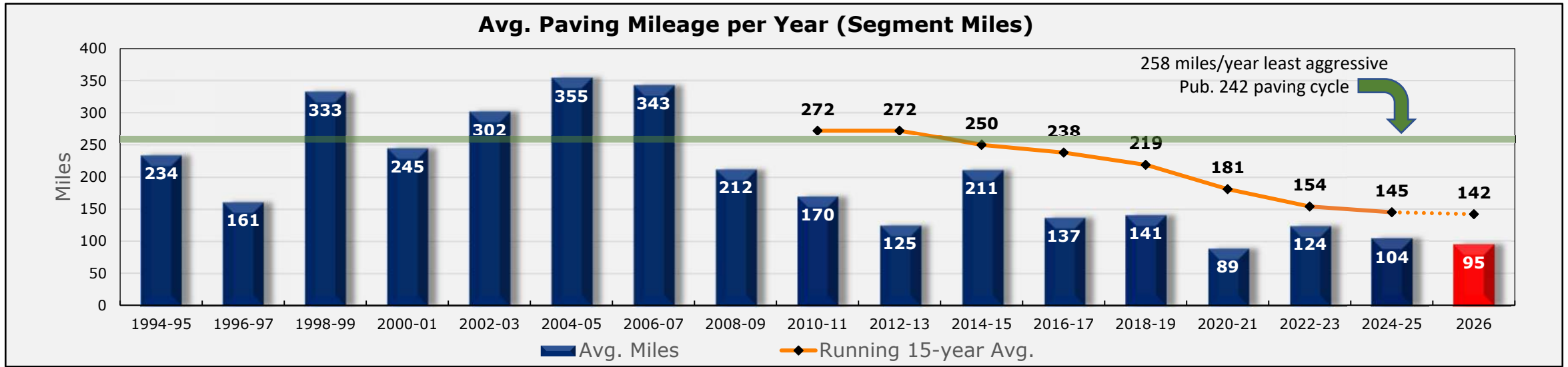
- District 9 has the highest average salt price in the state at **\$100.59/Ton**

Department Winter Material Usage & Cost

	2021	2022	2023	2024	2025
MATERIAL (tons)	60,161	46,709	38,911	84,941	59,365
TOTAL (000's)	\$18,429	\$17,421	\$17,315	\$28,312	\$25,247

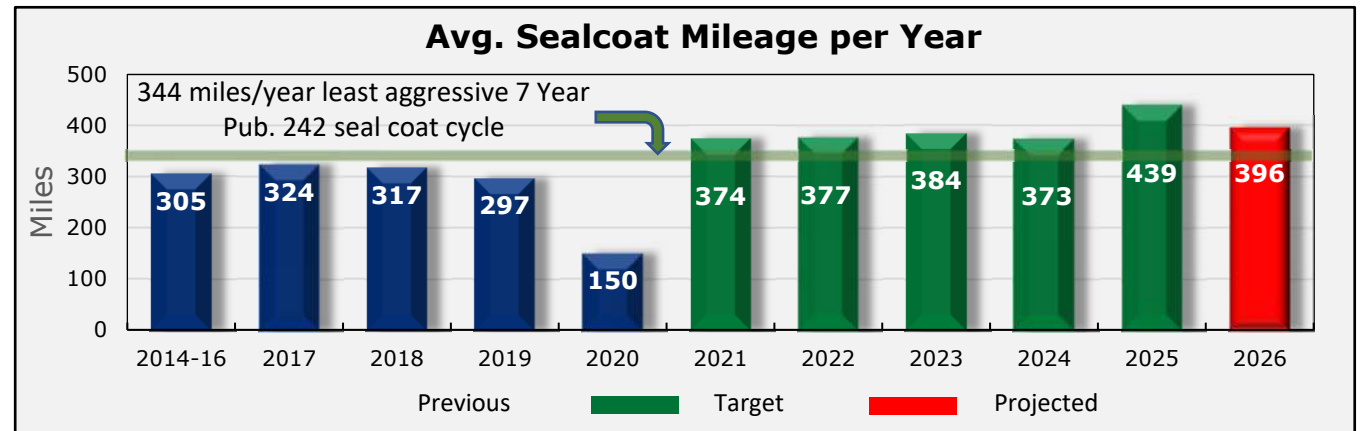


ASSET MANAGEMENT UPDATE & FUTURE PLANS - ROADWAY



CHALLENGES

- 409 funds have traditionally funded much of our asphalt paving
- Higher costs for contracted asphalt paving
- Balancing priorities for drainage, guiderail, ADA, tree trimming, sign updates, safety, geotechnical while still paving as much mileage as practical
 - Early 2000's maintenance funded resurfacing ~ 90% of funds went directly into paving
 - Current maintenance funded resurfacing ~ 60-65% of funds going to paving (35-40% for other priority work)



FUTURE PLANS

- Continue to pursue more seal coats and other low cost treatments to stretch the dollars and maintain pavement assets
- Perform prep work with maintenance forces on BPN 3 and 4 prior to paving contracts to save costs

Questions?