

December 2019

## Rocky Gap Recap

On November 8, 2019, members of ASHE Altoona took a break from our normally scheduled program to grab a bus down to Rocky Gap Casino and Resort in Maryland. Overlooking Lake Habeeb, this upscale casino and golf resort is surrounded by mountains inside Rocky Gap State Park. Whether it be for the scenic views, games of chance, a few hours at the spa, or the outstanding cuisine, everyone enjoyed the trip!



## Adopt a Highway

Thanks to the five that came out on a beautiful sunny October day to clean our portion of Route 764. We completed our work in 50 minutes then grabbed a bite to eat at Zach's Sports and Spirits. Among other topics we heard about Joe Franco's recent trip to Ireland. Thanks again for volunteering and thanks to STV for providing three \$25 Amazon gift cards.

## Holiday Dinner

On December 4, 2019, ASHE Altoona members gathered at the US Hotel in Holidaysburg for our annual holiday gathering. Everyone enjoyed happy hour, dinner and trivia night hosted by Jason Galli!

We would like to thank all Builders Club members and anyone else that contributed items for the gift basket raffle. Your generosity raised over \$1000 for the Mountain Lion Backpack program and ASHE Altoona matched that amount with an additional \$500. A check totaling \$1540 was sent to the Mountain Lion Backpack Program, which is enough to supply weekend meals for approximately 16 children in the Altoona Area School District this year!



## Paint the Plow

PennDOT's Paint the Plow Program began during the 2015-2016 winter season when it was first offered in Cambria County. In the years that followed, the program has expanded throughout the state and now is now offered in almost every county. The Paint the Plow program is a wonderful way for PennDOT and local communities to encourage and bring public awareness to safe driving on our roadways.

Schools that participate are asked to produce original artwork for a PennDOT plow that will be used to maintain state-owned roadways in their respective county. Students this year were tasked with designing and creating original artwork on a snow plow using the year's designated theme: Don't Rush in Ice and Slush



Bedford



Berlin Brothers Valley



Blacklick Valley



Cambria Heights



Central Cambria



Central High School



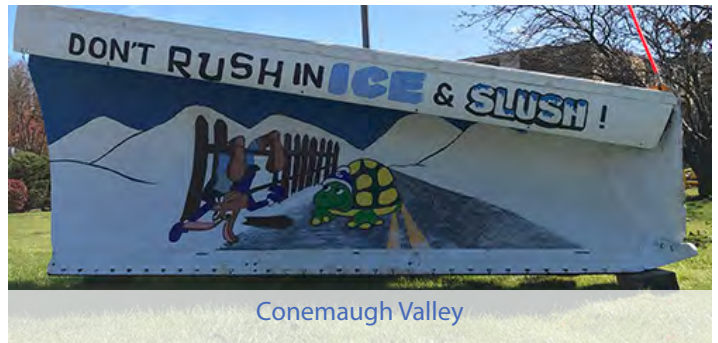
Admiral Peary



Conemaugh Township



Bedford County Technical Center



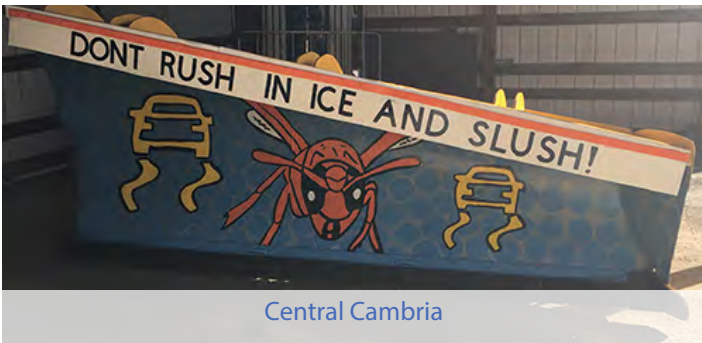
Conemaugh Valley



Everett



Forest Hills



Central Cambria



Juniata Valley



McConnellsburg High School



Northern Cambria



Portage



Richland



Somerset County Technology Center



Southern Fulton High School



Southern Huntingdon



Turkeyfoot Valley



Tussey Mountain



Windber

## From PennDOT District 9-0

### Canoe Creek Intersection

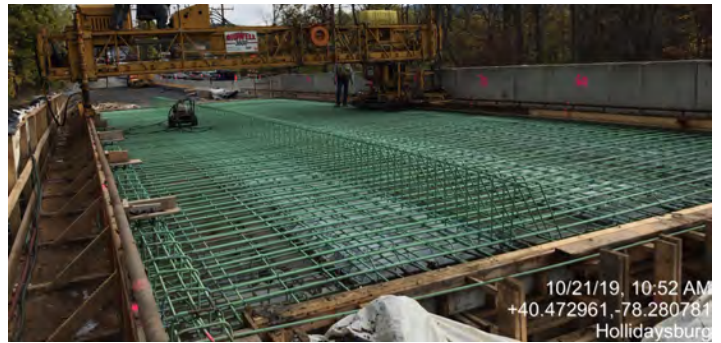
**Project Update:** The 2019 construction season completed the western end of the project. It included replacing a two-span T-beam bridge carrying US 22 over Canoe Creek with a single-span PA bulb-tee beam bridge. Also included was replacing an existing box culvert over an unnamed tributary of Canoe Creek slab bridge with a new precast concrete box culvert to accommodate a new center turn lane.

**Project Details:** The entire project consisted of construction and intersection improvements along approximately 1 mile stretch of SR 0022 near Canoe Creek State Park in Frankstown Township, Blair County. The work included the realignment of the SR 2022 intersection to form a four-way intersection with SR 0022 and SR 1011 (Turkey Valley Road), widening along SR 0022 to accommodate left turn lanes at the reconstructed intersection, replacement of a two-span concrete bridge with a single span concrete bridge carrying SR 0022 over Canoe Creek, replacement of a concrete box culvert with a precast concrete box culvert carrying SR 0022 over an unnamed tributary of Canoe Creek and construction of a precast concrete box culvert to carry the realigned SR 2022 (Juniata Valley Road) roadway over the unnamed tributary of Canoe Creek. The project also includes the realignment of SR 1011 (Beaverdam Road) to form a T-intersection with SR 0022. With the realignment of SR 1011 (Beaverdam Road), the intersection with T-444 (Flowing Spring Road) was reconstructed and a cul-de-sac was built to eliminate Flowing Spring Road's direct connection to SR 0022. Near the eastern limits of the project, T-444 (Flowing Spring Road) was realigned between the bridge carrying T-444 (Flowing Spring Road) over the Frankstown Branch of the Juniata River to form a T-intersection with SR 0022.

County:	Blair
State Route:	22
Start:	October 2017
Proposed End:	December 2019
Contract Bid:	\$9.7 Million
Contractor:	Plum Contracting, Inc.
Engineer:	The EADS Group, Inc.
ECMS #:	63586



With the realigned roadway, the existing T-446 (Weller Road) was removed. The Lower Trail Extension portion of the project consisted of the construction of approximately ½ mile of new shared use trail and a trail underpass. The trail extension provides a connection between the existing trail head for the Lower Trail (Flowing Spring Station) with the Canoe Creek State Park. The ½ mile of new trail includes approximately 500 feet along the portion of T-444 (Flowing Spring Road) that was removed as part of the project, approximately 800 feet of trail paralleling SR 0022, and the construction of a precast box culvert and retaining walls to provide a pedestrian underpass below SR 0022 near the realigned intersection of SR 1011 and SR 0022. The project also included a sliding slope, located east of the primary project area near the intersection of SR 0022 with SR 0866, which was stabilized using a R-4 rock blanket and a new inlet and cross pipe.



# **JANUARY DINNER MEETING**

**1-15-2020**

## **PARK HILLS GOLF CLUB ALTOONA**

*Cost: \$30 | RSVP by: 1-6-20  
to Barb Hoehne at  
[Barbara.Hoehne@stvinc.com](mailto:Barbara.Hoehne@stvinc.com)*

*Cocktail Hour: 5-6  
Dinner: 6-7  
Presentation: 7-8*

*Menu: Slow  
Cooked Beef  
Pot Roast and  
Maple Glazed Salmon,  
Garlic Mashed Potatoes,  
Fresh Vegetable Medley &  
Cheesecake with  
Raspberry Sauce*

*Jim Sedor, PE, Project  
Manager with the EADS  
Group, and Brian Miller,  
PE, President of Plum  
Contracting will present on  
the Canoe Creek Intersection  
Improvements Project.*



## Job Postings

Traffic Planning & Design, Inc. (TPD)

Traffic Planning & Design, Inc. (TPD) is seeking enthusiastic engineers to join our team! Our ideal candidates have a strong work ethic, a desire to learn and the willingness to work cohesively within a team. TPD offers competitive salaries and benefits, including an unmatched flex time policy, Paid Time Off, parental leave and a Professional Development program developed to help our staff continue their education and training throughout their careers. To learn more about TPD and apply for any of the positions below, please visit our website: <http://www.trafficpd.com/employment/Index.html>. Positions are available at all of our offices: Bethlehem, PA/Doylestown, PA/Harrisburg, PA/Philadelphia, PA/Pittsburgh, PA/Pottstown, PA/West Chester, PA/Camden, NJ/Elkton, MD/Asheville, NC.

Available positions:

- Transportation Construction Inspector/Manager
- Highway Design Specialist
- Highway or Bridge Design Project Manager
- Municipal Traffic Engineer
- Traffic Engineer
- Traffic Signal/ITS Engineer
- Transportation Engineer
- Structural Designer

## ASHE Builder's Club Members

Thank you for supporting the ASHE Altoona Section!

AECOM Technical Services, Inc • Alfred Benesch & Company

American Geotechnical & Environmental Services, Inc. • Arrow Land Solutions, LLC

CDR Maguire, Inc. • Century Engineering • The EADS Group • GAI Consultants, Inc.

Geo-Mechanics, Inc. • Gibson-Thomas Engineering Co., Inc.

Grannas Bros. Stone & Asphalt Co., Inc. • Greenman-Pedersen, Inc.

Gwin, Dobson & Foreman, Inc. • HDR • Heberling Associates, Inc.

H. W. Lochner, Inc. • Johnson, Mirmiran & Thompson, Inc. • KCI Technologies, Inc.

Keller Engineers • L. R. Kimball • Mackin Engineering Company

The Markosky Engineering Group, Inc. • Michael Baker International, Inc. • Modjeski & Masters, Inc.

ms consultants, inc. • Navarro & Wright Consulting Engineers, Inc. • N.E.S. & L. Co, Inc.

P. Joseph Lehman, Inc. • RETTEW Associates • SAI Consulting Engineers, Inc. • Skelly & Loy, Inc.

Stahl Sheaffer Engineering, LLC • Stantec Consulting Services, Inc.

Stiffler, McGraw & Associates, Inc. • STV Incorporated

Sucevic, Piccolomini, & Kuchar Engineering, Inc. • Traffic Planning and Design • TranSystems

Whitman, Requardt and Associates, LLP • Whitney, Bailey, Cox & Magnani, LLC • WSP USA, Inc.

ASHE Altoona likes to feature one of our Builder's Club members in each edition of the newsletter. If interested in this opportunity, please reach out to Keven McCloskey ([kmccloskey@hwlochner.com](mailto:kmccloskey@hwlochner.com)) for details.

**2019-2020****Officers:****President**

Bill Wieserman

**First Vice-President**

Dave Hoglund

**Second Vice-President**

Barb Hoehne

**Secretary**

Michele Girolami

**Treasurer**

Ed Stoltz

**Past President**

Joshua England

**Board of Directors:****1 Year**

Sean Hart

Devin Lansberry

Matt Walerysiak

**2 Year**

Gloria Collier

Keven McCloskey

Jason Jackson

**3 Year**

Clyde Naugle

Jason Galli

Dave Thompson

**Newsletter:****Editor**

Keven McCloskey

[kmccloskey@hwlochner.com](mailto:kmccloskey@hwlochner.com)

## The Roundabout

1/8 – ASHE Mid-Allegheny – Dinner Meeting

1/9 – ASHE Harrisburg – Lunch Meeting

1/14 – ASHE North East Penn – Dinner Meeting

1/29 – ASHE Southwest Penn – State of District 12-0

## Save the Date! A Look Ahead...

2/19 – UPJ Dinner Meeting

2/20 – Annual Ski Trip

## Welcome New Members

- Frank Sanders; L.R. Kimball
- John Kopchik; Erdman Anthony
- Josiah Brady; Arrow Land Solutions, LLC

## Call for Project Entries

The Altoona Section is accepting District 9-0 projects for the 2020 National Project of the Year. ASHE National will recognize the outstanding work completed by members of the ASHE with the National Project of the Year Award. Projects submitted must be directly related to a field of transportation. Eligible project types include highways, bridges, traffic signals, railroads, public transit, and bikeways. One project will be selected for an ASHE National Project of the Year in the \$20 million and under category and the over \$20 million category. For further information please visit the ASHE National website at [www.ashe.pro](http://www.ashe.pro) for the submission requirements and entry form. Entries must be submitted to [w.wieserman@gaiconsultants.com](mailto:w.wieserman@gaiconsultants.com) prior to January 7, 2020.

Happy Holidays from ASHE Altoona!

If you wish to be involved with the ASHE Altoona section for the 2020-2021 season, please contact Joshua England at [jengland@walshgroup.com](mailto:jengland@walshgroup.com)

The mission of the American Society of Highway Engineers is to provide a forum for members and partners of the highway industry to promote a safe, efficient and sustainable transportation system through education, innovation and fellowship.

