

The INTER-SECTION

February 2018



ASHE
Altoona

ASHE Altoona Dinner Meeting

February 21, 2018

Event Details

Where: University of Pittsburgh-Johnstown

When: February 21, 2018

Time: 5:00 pm to 9:00 pm

Cost: \$25/per person (Guests are Welcome!)
\$10/per student*

Cost Includes:

Dinner and Open Bar

*Must be 21 to consume alcoholic beverages (student rate does not include alcoholic beverages)

Please RSVP to Bill Wieserman at
w.wieserman@gaiconsultants.com

by February 13th to reserve your seat!

~Reservations made and not honored will be invoiced~



What: UPJ Student Presentations and Transportation Industry Panel Discussion

The panel is comprised of a mix of both state and consultant professionals with varying backgrounds and experiences. The panel is for UPJ students to inquire about the industry from engineering professionals.

Who: PennDOT District 9-0 and 10-0, as well as various engineering consultants

This is a great opportunity for networking for both students and attendees.

PennDOT and Friends Annual Ski Trip

February 16, 2018



Event Details

Where: Seven Springs Mountain Resort
777 Water Wheel Drive
Champion, PA

When: February 16, 2018

Ski Hours: 9:00 am to 7:00 pm

Costs:

Lift Tickets: \$43
Skis/Boots: \$30
Snowboard/Boots: \$30
Lessons Available: \$22



Please RSVP to Kristen Swan at kswan@pa.gov
by February 9th to reserve a spot!

*** **Free Lift Ticket Giveaway** ***



Holiday Dinner Highlights

Event Details

On Wednesday, December 14, we got together at the Germantown Winery to enjoy a holiday event. The event included a night of socializing and fellowship with our ASHE Altoona friends.

A Season of Giving

In the spirit of the season and as we always do at our holiday dinner, we supported a local cause. This year's event supported the Tiger Pack Program in the Hollidaysburg Area School District. The Tiger Pack Program provides elementary school children with food for the weekends when other resources may not be available to them. ***This year, we donated \$765 to the Tiger Pack Program.***

A Big Thank You!

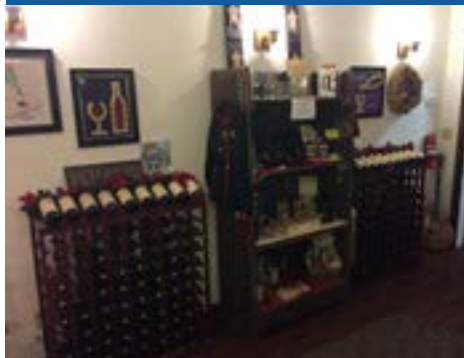
Thank you to all those who donated items for our raffle. We could not have done it without you!

Tiger Pack Program

For more information on the Tiger Pack Program, visit the [Tiger Pack Program](#) Facebook page.



Top and Bottom: Scenes from the winery
Right: The festively-decorated raffle table



Top: Enjoying dinner and waiting patiently for the lucky raffle numbers to be drawn

Bottom L: Socializing

Bottom R: Germantown Winery wines



Builder's Club of the Month

ONEH¹⁰⁰RED™

One hundred and HDR. A century of pushing the boundaries of what's possible.
A legacy of bringing innovative solutions to every project—no matter the challenge.
A future of collaborating and creating the only way we know how. Together.



hdr100.com

Proudly supporting the ASHE Altoona Section.



Beechwood Boulevard (Greenfield) Bridge Replacement "Pittsburgh's Gateway to the East"

HDR began the Greenfield Bridge project in 2010 with an in-depth inspection of the existing reinforced concrete open spandrel arch that had connected Greenfield to neighboring Schenley Park since 1921. Originally just spanning over a neighborhood street and stream, by the 1950's the structure carried traffic over one of the busiest stretches of Interstate in Western Pennsylvania. By 2011, when HDR began studying alternatives for rehabilitation or replacement of the concrete arch, I-376 carried nearly 85,000 vehicles per day. By this time, the aging concrete arch that was originally conceived of as a grand entrance to Schenley Park was showing its age. A much needed rehabilitation in the 1980's stripped many of the original architectural elements. Of even greater concern, by the 1990's, netting and a "bridge under-the-bridge" were in place under the structure due to concerns with falling concrete.



With this context in mind, by 2012, HDR and the City of Pittsburgh had turned their focus to a replacement structure. With this decision came many challenges. Central to all of these challenges was the desire to provide a new structure that reestablished the bridge as a grand entrance to Schenley Park, while also maintaining its significance as Pittsburgh's Gateway to the East. A design consistent with the history and context of the site was clearly desired by all of the stakeholders. In order to maintain the gateway nature of the structure, the arch shape was quickly identified as one of the key features of the bridge. HDR studied several arch concepts for the replacement structure, but determined that a steel open spandrel arch met the social, economic, and structural goals of the project. Key to this decision was the ability to erect the majority of the steel during just one weekend closure of the Interstate.

In order to further reestablish the bridge as a grand entrance to Schenley Park, the remaining architectural elements from the original 1921 structure were salvaged prior to demolition for reuse on the new bridge. Stone architectural pillars, urns, and the only remaining obelisk from the 1921 decorative lighting were salvaged and incorporated into the new design. In addition to these architectural details, the bridge features a widened deck section that balances vehicular, pedestrian, and bicycle access to the park. Decorative lighting and a uniquely designed fence that mimics the arch shape of the bridge flank a widened sidewalk, three widened vehicular lanes, and a combination of shared use and dedicated bicycle lanes.



ASHE Altoona January Event Highlights

Geoff Stryker, STV, gave an overview of the I-95 Betsy Ross Interchange Reconstruction project. Below are a few photos of the event, which was held at the Blair County Convention Center.



Top: Geoff Stryker presenting on the Betsy Ross Interchange
Bottom: ASHE members watching the presentation
Left: Attendees working their way through the buffet line



The Connector...

Where in District 9-0 are Penny and Dottie?



Penny & Dottie

COME ON, VENTURE A GUESS!

Where do you think Penny and Dottie are visiting in the beautiful countryside of District 9-0?



Hint: Etched in stone, this bridge can be found in what District 9-0 city?
(The answer will be published in the next edition of the *Inter-Section*.)

Answer to Last Month's Clue: American Legion in Beaverdale, PA

ASHE Builder's Club Members

Thank you for supporting the ASHE Altoona Section!

[A.D. Marble & Company, Inc.](#)

[AECOM](#)

[AGES, Inc.](#)

[Arrow Land Solutions](#)

[Alfred Benesch & Company](#)

[CDR Maguire, Inc.](#)

[Century Engineering](#)

[Dewberry](#)

[The EADS Group](#)

[GAI Consultants, Inc.](#)

[Gibson-Thomas Engineering Co., Inc.](#)

[Grannas Bros. Stone & Asphalt Co., Inc.](#)

[Greenman-Pedersen, Inc.](#)

[Gwin, Dobson & Foreman, Inc.](#)

[HDR Engineering, Inc.](#)

[Heberling Associates, Inc.](#)

[H. W. Lochner, Inc.](#)

[Johnson, Mirmiran & Thompson, Inc.](#)

[KCI Technologies, Inc.](#)

[Keller Engineers](#)

[Larson Design Group](#)

[L. Robert Kimball](#)

[Mackin Engineering Company](#)

[The Markosky Engineering Group, Inc.](#)

[McCormick Taylor, Inc.](#)

[ms consultants, inc.](#)

[Navarro & Wright Consulting Engineers, Inc.](#)

[New Enterprise Stone & Lime, Co.](#)

[PennDOT District 9-0](#)

[P. Joseph Lehman, Inc.](#)

[RETTEW](#)

[SAI Consulting Engineers, Inc.](#)

[Skelly & Loy, Inc.](#)

[Stantec Consulting Services, Inc.](#)

[Stiffler, McGraw & Associates, Inc.](#)

[STV Incorporated](#)

[Sucevic, Piccolomini, & Kuchar Engineering, Inc.](#)

[Traffic Planning and Design, Inc.](#)

[Trans Associates](#)

[TranSystems](#)

[Urban Engineers](#)

[Whitman, Requardt and Associates, LLP](#)

[Whitney, Bailey, Cox & Magnani, LLC](#)

Have a grateful heart...

Among the things you can give and still keep are your word, your smile, and a grateful heart. ~ Zig Ziglar

In that spirit of giving, we donated \$305 (\$205 from the collection plate and \$100 from ASHE Altoona) to the **Bill Wolfe Children's Fund**, c/o Members 1st, P. O. Box 2110, Mechanicsburg, PA 17055.



Officers

President

Jessica Urbas

First Vice-President

Joshua England

Second Vice-President

Bill Wieserman

Secretary

Michele Girolami

Treasurer

Ed Stoltz

Past President

Kristen Swan

Board of Directors

1 Year

Brittany Greaser

Dave Hoglund

Ricky Kruike

2 Year

Barb Hoehne

Jason Shura

Geoff Stryker

3 Year

Sean Hart

Jeff Stellabotte

Matt Walerysiak

Newsletter

Editor

Dave Hoglund

dhoglund@rettew.com

Please submit your contributions
by February 19, 2018.



The Roundabout...

Industry Events & Other Chapter Happenings

Date	Event
February 5	ASHE Harrisburg Luncheon Meeting (Radisson Penn Harris, Camp Hill)
February 7	ACEC/PA Government Affairs Breakfast (Hershey Country Club)
February 7	ASHE Pittsburgh Dinner Meeting (Chadwick, Pittsburgh)
February 14	ACEC/PA Central Chapter Lunch Meeting (West Shore CC, Camp Hill)
February 16	PennDOT District 9-0 and Friends Annual Ski Trip (Seven Springs)
February 20	ACEC/PA Easter Chapter Breakfast Meeting (Desmond Hotel)
February 21	ASHE Altoona/Mid-Allegheny Dinner Meeting (UPJ-Living Learning Ctr)
February 21	CPEWC Banquet (West Shore CC)
February 22	ACEC/PA Diamond Awards Banquet (Lancaster Marriott at Penn Square)
February 28	ASHE Pittsburgh Bowling Outing (Main Event, Robinson)
March 8	ASHE NE Penn/East Penn/Del Valley (Kalahari Resort, Mount Pocono)
March 14	ASHE Pittsburgh Educational Seminar (University of Pittsburgh)
March 15	March of Dimes 25th Annual Transportation, Building, & Construction Awards Luncheon (PA Convention Center)
March 21	ASHE Altoona Tour at Martin-Baker and Dinner at Johnstown Airport
April 9-10	MASITE/ITSPA PA Automated Vehicle Summit (DoubleTree, Pittsburgh)
April 11	3rd Annual Joint ASHE Secretary Meeting (Cranberry Hilton Doubletree)

Save the Date! A look ahead...

March 21: ASHE Altoona Tour at Martin-Baker and Dinner

April 17: ASHE Altoona/PennDOT District 9-0 Joint Workshop

May 17-20: ASHE National Conference (Westin Cleveland Downtown)

ASHE Altoona Scholarship

We are pleased to sponsor our 30th Annual Scholarship for prospective civil engineers. We will pay up to \$3000 to the school(s) directly in the name(s) of the recipient(s) for the fall 2018 semester. Watch the [ASHE Altoona website](#) for info.

Career Opportunities

Visit the [ASHE Altoona website](#) and click "Career Opportunities."

Builders Club Sponsors can submit job openings to be posted by emailing Matt Walerysiak at mwalerysiak@markosky.com



Please like us
on Facebook

*If you wish to be involved with the ASHE
Altoona section for the 2018 season,
please contact Kristen Swan at kswan@pa.gov*