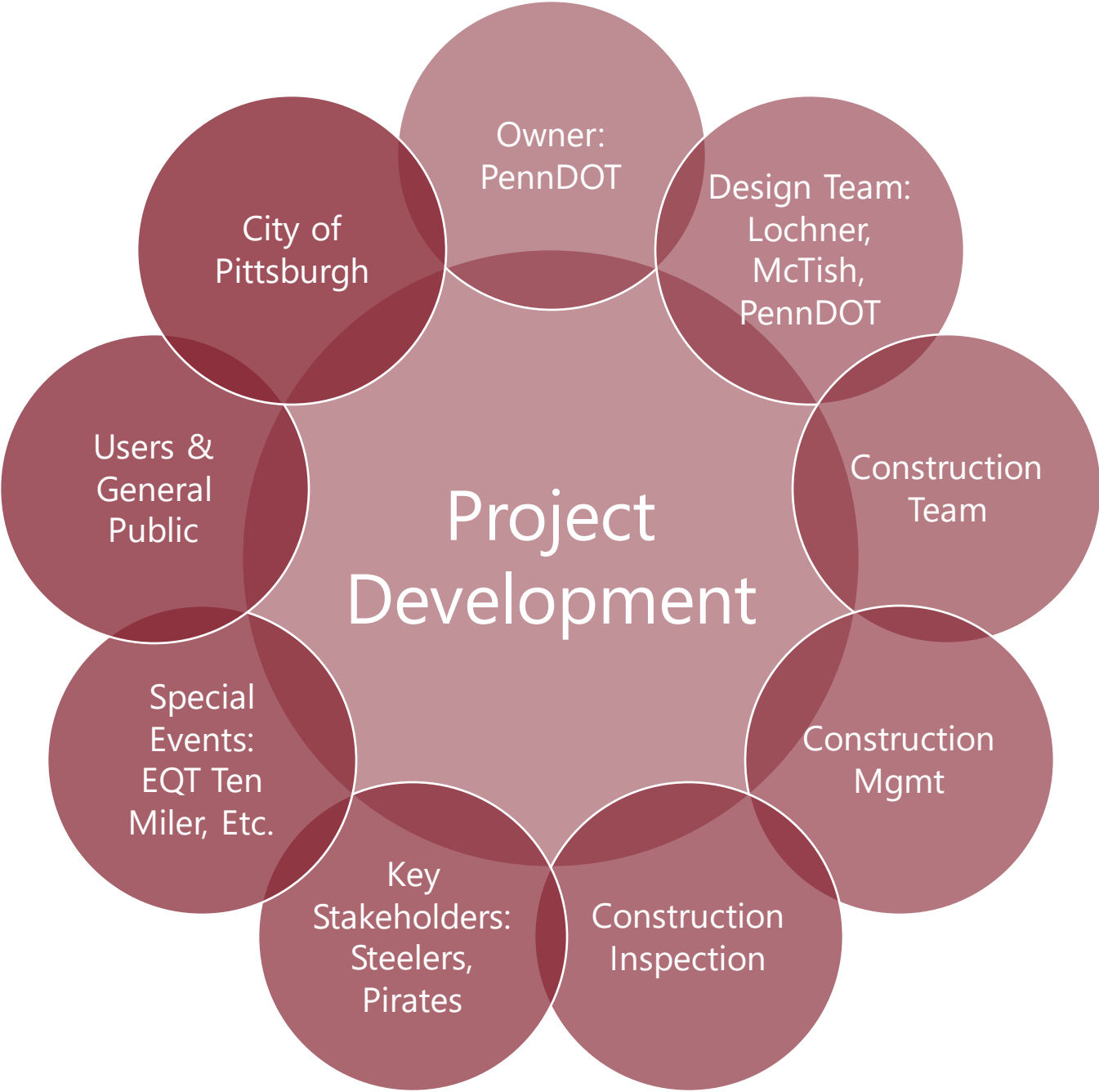


# Coordination Critical to Project Success



# When to make a move?

- No SPMT Bridge Move and SR 19 Closure during Special Events
- Steeler Schedule **UNKNOWN** at Letting
- SPMT Equipment has to be reserved
- Weather never cooperates



# Coordinating the SPMT Move

October 2019						
Sunday	Monday	Tuesday	Wednesday	Thursday	Friday	Saturday
		1	2	3	4	5
			PPG Phil Collins - 8pm	 vs. Sabres - 7PM	PPG Mercy Me - 7pm	 vs. Blue Jackets - 7PM
6	7	8	9	10	11	12
vs. Ravens, 1PM PPG Chance the Rapper - 7PM	PPG The Black Keys - 7PM	 vs. Jets - 7PM	PPG Hugh Jackman - 7:30PM	 vs. Ducks - 7PM	PPG The Chainsmokers - 7:30PM	PPG Carrie Underwood - 7PM <b>COLUMBUS DAY WEEKEND</b>
13	14	15	16	17	18	19
 <b>COLUMBUS DAY WEEKEND</b>	<b>COLUMBUS DAY</b>		 vs. Avalanche - 7PM	PPG Bob Seger and the Silver Bullet Band - 7:30PM	 vs. Stars - 7PM	 vs. Golden Knights - 7PM
20	21	22	23	24	25	26
				PPG Jurassic World Live 7PM	PPG Jurassic World Live 7PM	 @ Heinz Field vs. Miami PPG Jurassic World Live 11AM, 3PM, 7PM
27	28	29	30	31		
PPG Jurassic World Live 12PM, 4PM	vs. Dolphins, 8:15 PM 	 vs. Flyers - 7PM		<b>HALLOWEEN</b>		

November 2019						
Sunday	Monday	Tuesday	Wednesday	Thursday	Friday	Saturday
					1	2
						 vs. Oilers - 1PM
3	4	5	6	7	8	9
vs. Colts, 1PM  Daylight Savings					PPG TOOL - 8PM	 vs. Blackhawks - 7PM
10	11	12	13	14	15	16
vs. Rams, 4:25PM 	<b>VETERANS DAY</b>		PPG Elton John - 8PM	 @ Heinz Field vs. N Carolina		 vs. Maple Leafs - 7PM
17	18	19	20	21	22	23
		 vs. Islanders - 7PM			 vs. Devils - 7PM <b>Light Up Night</b>	PPG Luke Combs 7PM
24	25	26	27	28	29	30
	 vs. Flames - 7PM		 vs. Canucks - 7PM	<b>THANKSGIVING</b>	<b>Black Friday</b>	 @ Heinz Field vs. Boston



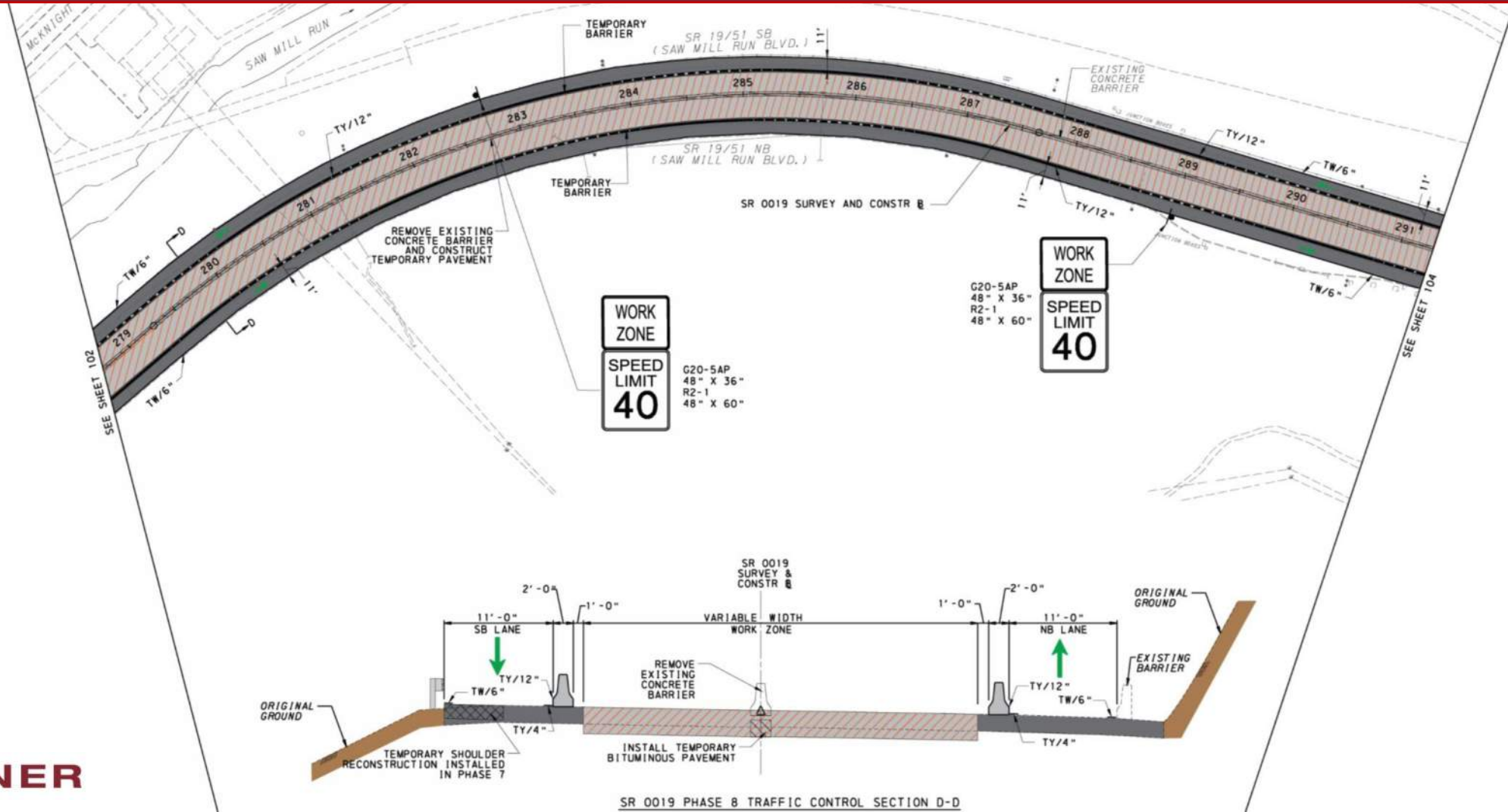
**SR 19 / 51 (Saw Mill Run Blvd.) Southbound Detour for Shaler St. Bridge Replacement**

1. From the West End Circle, take Steuben Street
2. Turn left onto Short Street
3. Bear right onto South Main Street
4. Turn left onto Wabash Street
5. Wabash Street becomes Greentree Road
6. Turn left onto Woodville Avenue
7. Turn right onto the ramp to I-376 Parkway West
8. To continue to southbound Route 19, bear left toward South Truck 19/51 toward Uniontown
9. Stay left toward East 376/South 51 toward Uniontown
10. Take the South Truck 19/51 ramp (Exit 69B) toward Uniontown

Detour Route
  CLOSED Route
  Construction Area



# Partial Width Construction



# Crossover Construction



# Q & A





**Thank you!**

