

UPCOMING PROJECTS ASHE

VINCE GREENLAND, P.E.

ADE - DESIGN



DESIGN DIVISION

PennDOT District 9-0 Design



Vince Greenland, P.E.
Assistant District Executive
Design
(814) 696-7151

Ashley Conese
Clerk Typist 2
(814) 696-7189



Updated 03/14/2022

DESIGN - BRIDGE



Scott Roberts, P.E.
District Bridge Engineer
(814) 696-7180

INSPECTION



Dustin Ohler, P.E.
Asst. Bridge Engr. - Insp.
(814) 696-7281



Ed Grove, E.I.T.
Project Manager
(814) 696-7181



Dave Lanzendorfer, P.E.
Project Manager
(814) 317-3051

DESIGN REVIEWS

W. Keith Fulton, P.E.
Asst. Bridge Engr. - Design
(814) 696-7186



Joel Gallagher, P.E.
Project Manager
(814) 317-3063



James Bittner, P.E.
Project Manager
(814) 696-7184



DESIGN - PLANS



James Pruss, P.E.
Portfolio Manager
(814) 696-6850

PLANS DEVELOPMENT



Russ Driskel, P.E.
Plans Lead
(814) 696-7139



Nathan Hoover, E.I.T.
Project Manager
(814) 317-3079



Garrett Berkey
Civil Engineer
(814) 696-3899



Nicki Donahoe, P.E.
QA/QC Constructability
Lead
(814) 317-1650



Raymond Seese, P.E.
Project Manager
(814) 696-6821

Vacant
Civil Engineer
(814) 696-7160



Melissa Irwin, P.E.
Consultant Design Lead
(814) 696-6858



Joshua Schaffer, P.E.
Project Manager
(814) 696-7282



Alyssa Popchack
Civil Engineer
(814) 317-3046



Jaclyn Himmelwright, E.I.T.
Project Manager
(814) 696-7171



Adam Sherlock, E.I.T.
Civil Engineer
(814) 317-3146



Michael Stone, P.E.
Project Manager
(814) 696-7157



Nolan Paronish
Civil Engineer
(814) 317-3144

DESIGN - SERVICES

John Ciprich, P.E.
Design Services Engineer
(814) 696-7204



RIGHT OF WAY



Cindy Witherow
RW Administrator
(814) 696-7210



Kurt Schimminger
Chf Real Estate Appr
(814) 696-7217



Stormie Cannistraci
Chief Negotiator
(814) 696-7206

SURVEY

Douglas Eckard, P.L.S.
Chief of Surveys
(814) 696-7212



Jason Wilkinson, S.I.T.
File Room
(814) 696-7193



UTILITIES

John Beck
Dstr Util Adm
(814) 696-7208



Mark Rowland
Utility Relocation
Specialist
(814) 317-3062



Beth Anderson
Utility Relocation
Technician
(814) 317-3048



PLANNING AND PROGRAMMING



Anne Stich
Planning & Programming
Supervisor
(814) 696-6847



Cristy Shumac
Sr. Civil Engineer Supervisor
(814) 696-6855



Christopher Hull
Civil Engineer
(814) 317-3060



Randy Hillegass
Civil Engineer
(814) 696-7166



Jon Guyer
Business Analyst
(814) 696-7267



Brandon Silko
Geospatial Specialist
(814) 696-7235

GRADE CROSSING



Ryan Dodson, E.I.T.
Project Manager
(814) 696-7265

ENVIRONMENTAL

Tom Yocum
Environmental Planning
Manager
(814) 696-7224



NEPA



Sarah McClellan
District Environmental
Planning Supv Trnspt
(814) 696-7280



Attilio Squillario
Env Plnr 2
(814) 696-7116



Andrea Burkhardt
Env Plnr 2
(814) 696-2403



Tina Enderlein
Env Plnr 2
(814) 696-7153

PERMITS

Steve Jano
Permit Manager
(814) 696-7211



Vacant
CE Trnspt
(814) 317-3078

Jamie Chestney
Envtl Plnr 2
(814) 696-7227



Andy Gonsman
Env Plnr 2
(814) 696-4299



INTERSECTION DESIGN ISSUES

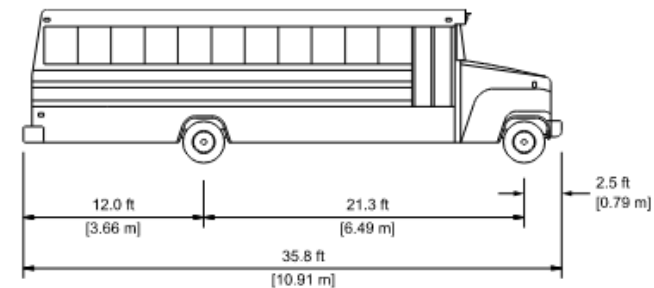
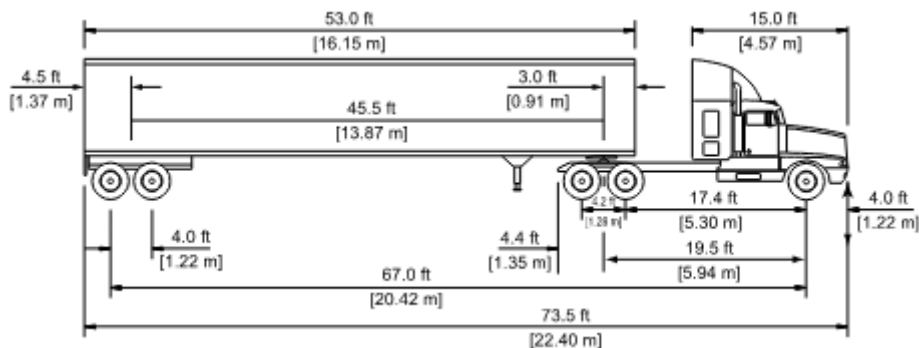


SELECTING A DESIGN VEHICLE

Things to Consider:

- What is the largest vehicle to use the roadway with a notable frequency?
 - Interstates or State Highways - semi trailers (Use a WB-67 at a minimum for design purposes)
 - Local Roads - passenger vehicles and buses
- Are there any facilities that have annual or semi-annual trailer combinations or oversized loads?

Reference: AASHTO Greenbook 7th Ed, Sections 2.8.1 and 2.8.2 for more information.



TURNING MOVEMENTS

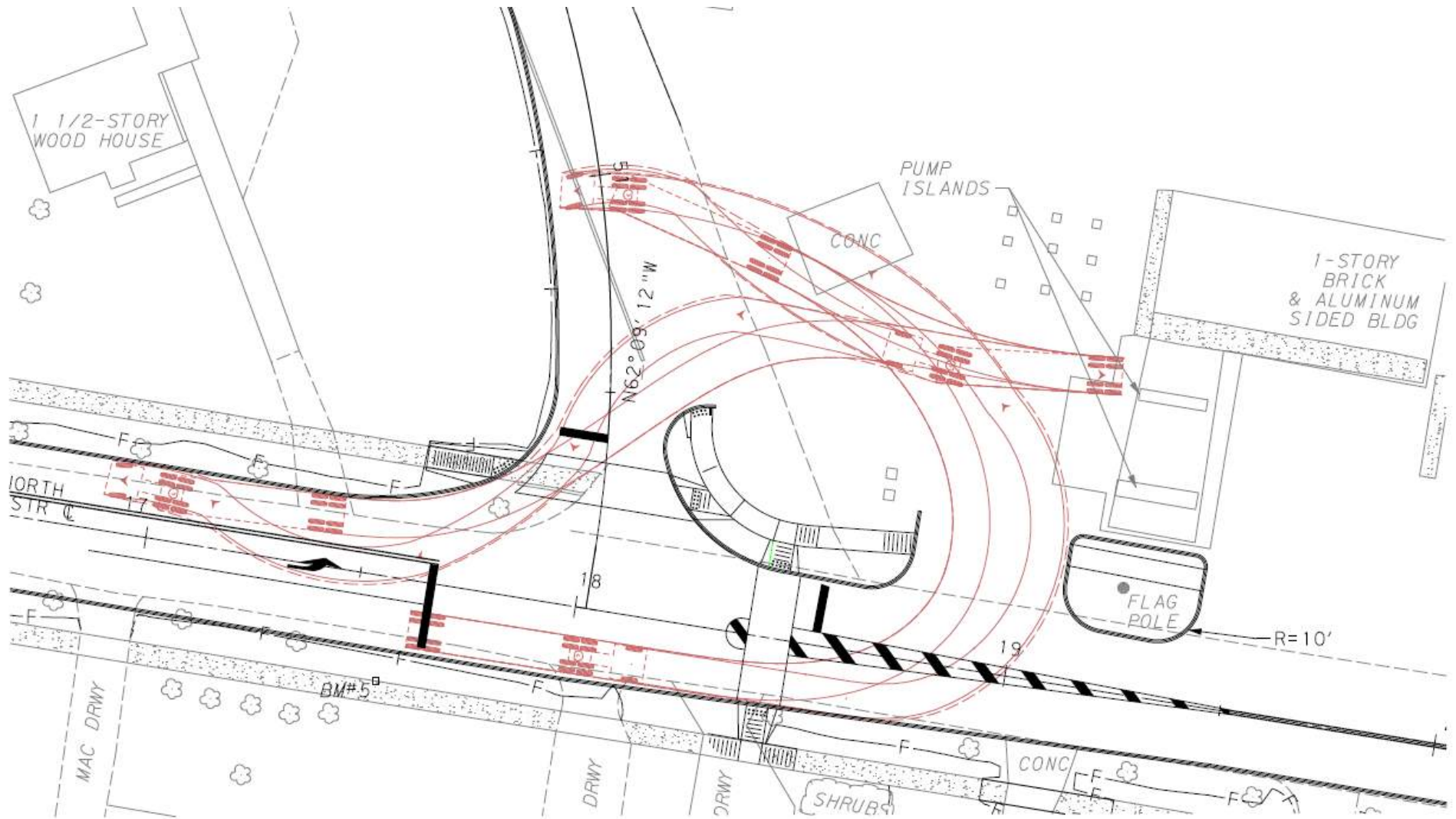


Issues

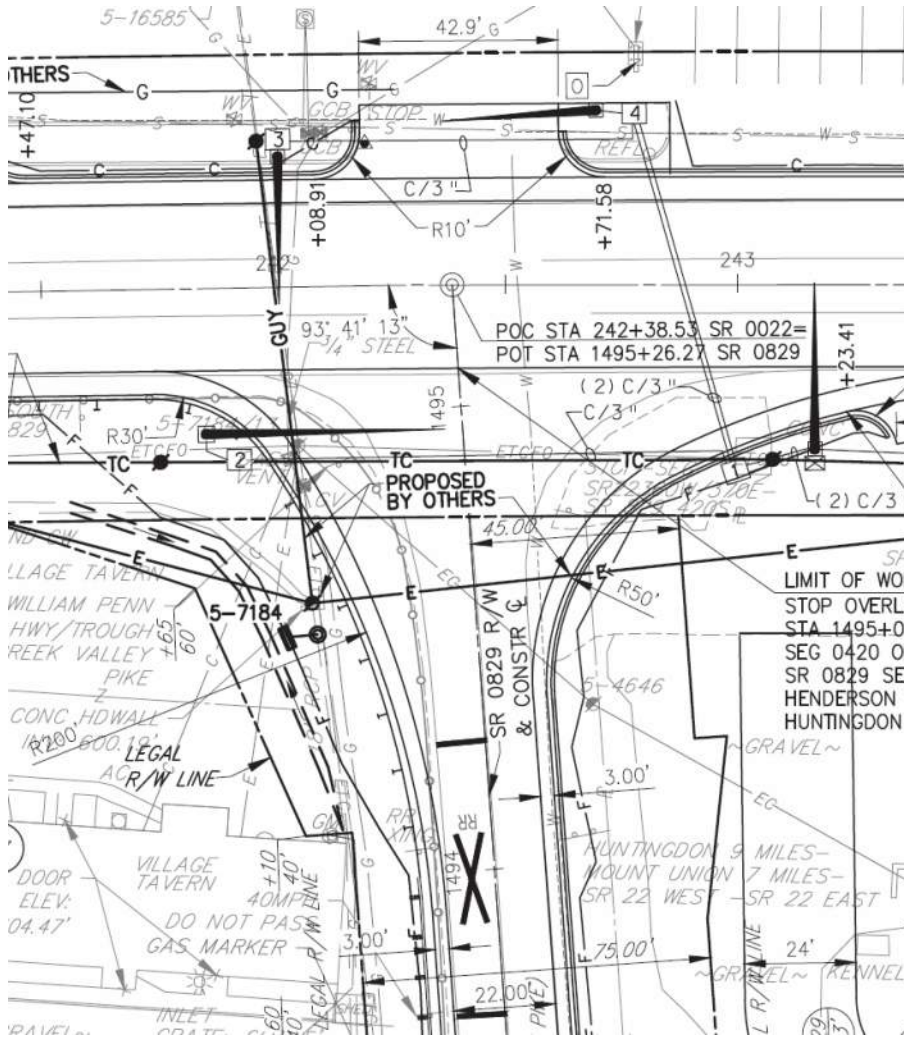
- Turning movements go over the curb
- Large vehicles through the intersection
- Gas Station deliveries



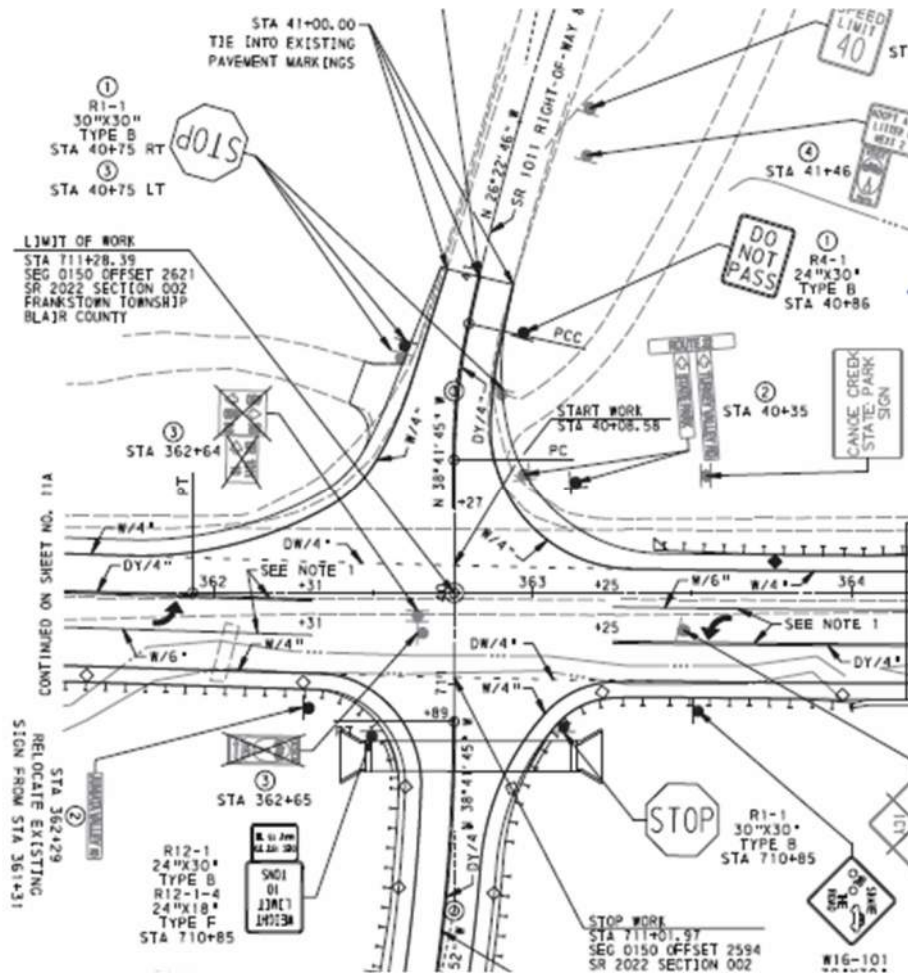
TURNING MOVEMENTS



INTERSECTION WIDENING



INTERSECTION DELINEATION



- Driver was stopping too far back at intersection
- Line stripping stopped 18.4' off the white skip lines
- Double yellow line was extended closer to skip lines at the intersection to give the traveling public a better sight line



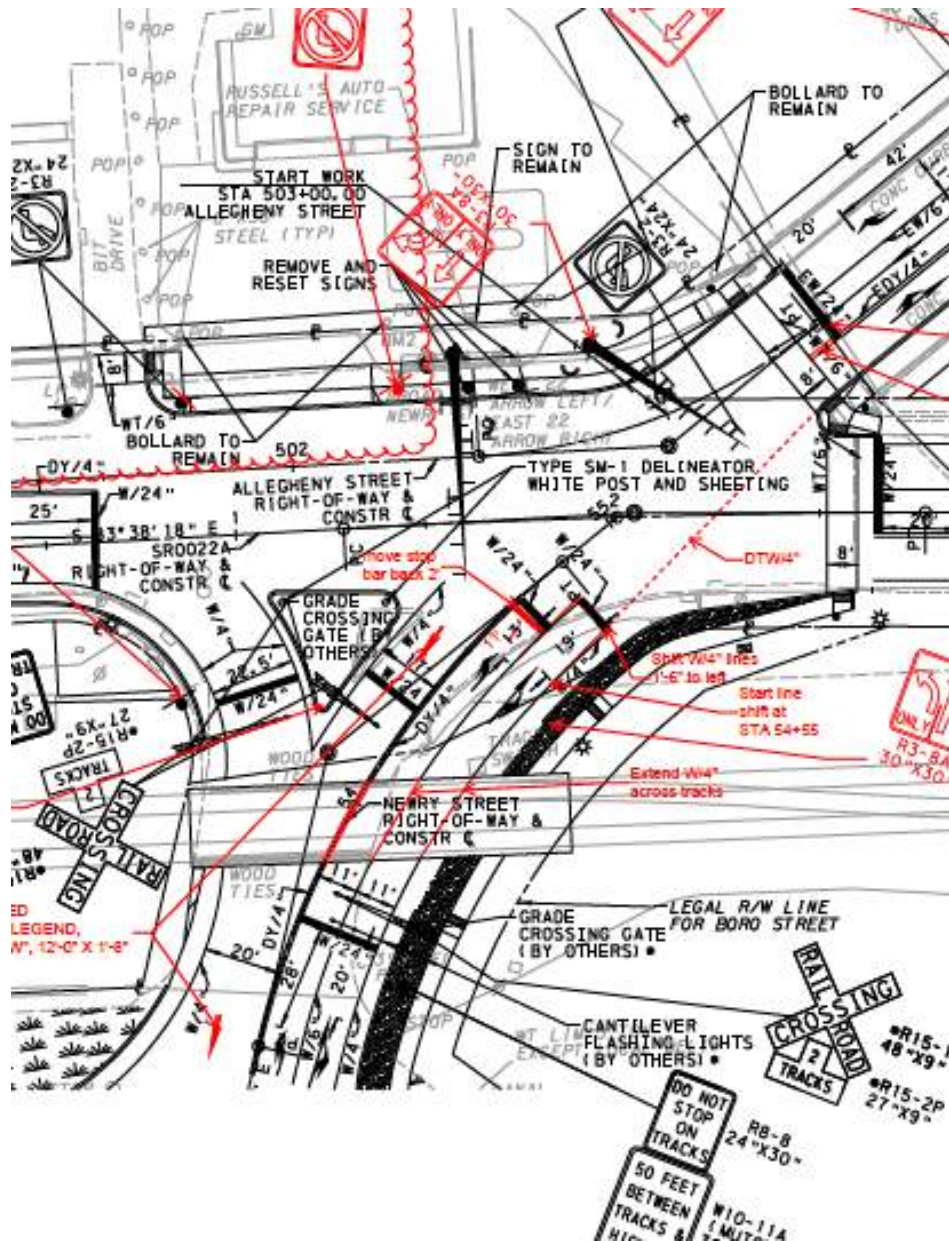
INTERSECTION DELINEATION



- Sight distance was not adequate at this location.
- White skip lines were painted across the main line road to give the traveling public a better reference point as to how far they could pull up to have a better sight line.
- Double yellow was also extended to guide the driver closer to stop location.
- Paving joint was being used as the “stop bar”.



INTERSECTION DELINEATION



- White skip lines through intersection to help guide driver through intersection.
- Stop bar was moved back by 2' to aid driver navigating left turn on to SR 0022.
- Arrow was added for traffic coming from Allegheny Street Bridge towards Newry Street to delineate receiving lane.



INTERSECTION DELINEATION



TURNING MOVEMENTS

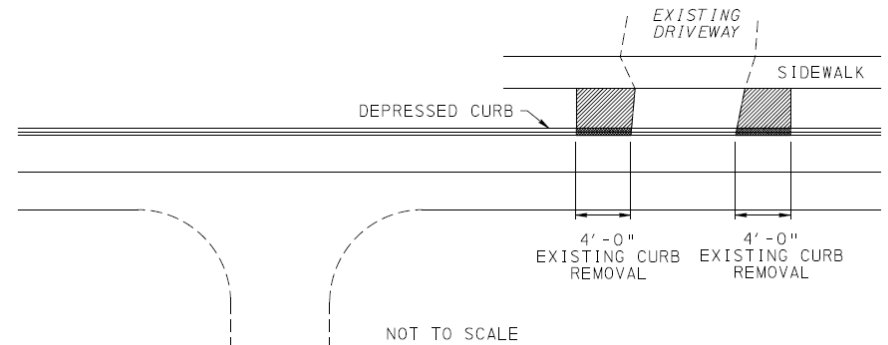
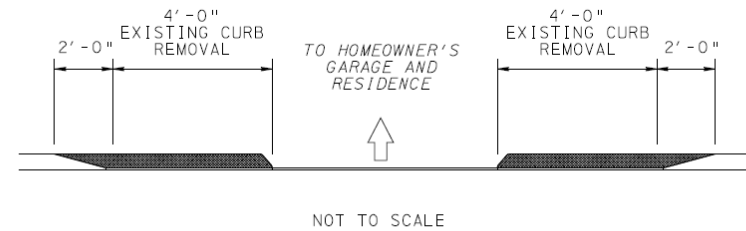
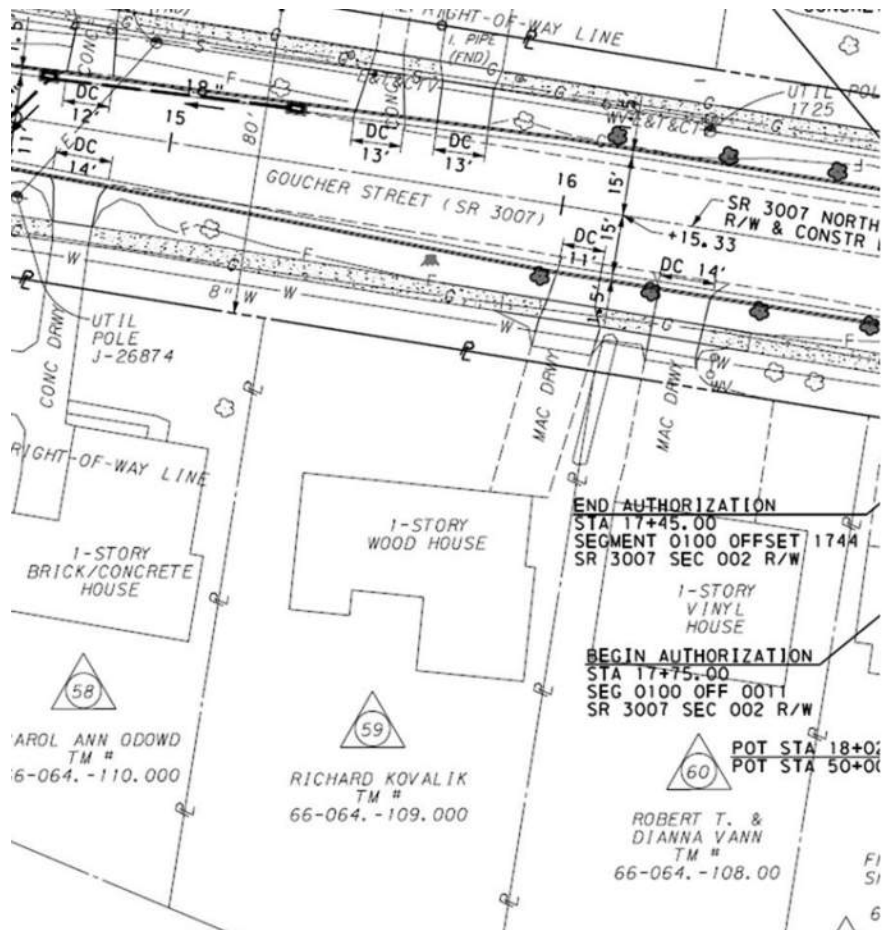


Complaint received from resident.

- Resident could not turn into his driveway within the new depressed curb area.
- Wanted an additional 5' of pavement to make a more gradual transition from sidewalk toward this house.
- The roadway pavement and the depressed curb are level, and everyone else had a DC with an inch or so reveal.



TURNING MOVEMENTS



- Existing curb removal detail noted 4'0.
- Proposed curb opening matched existing but did not meet Chapter 441.



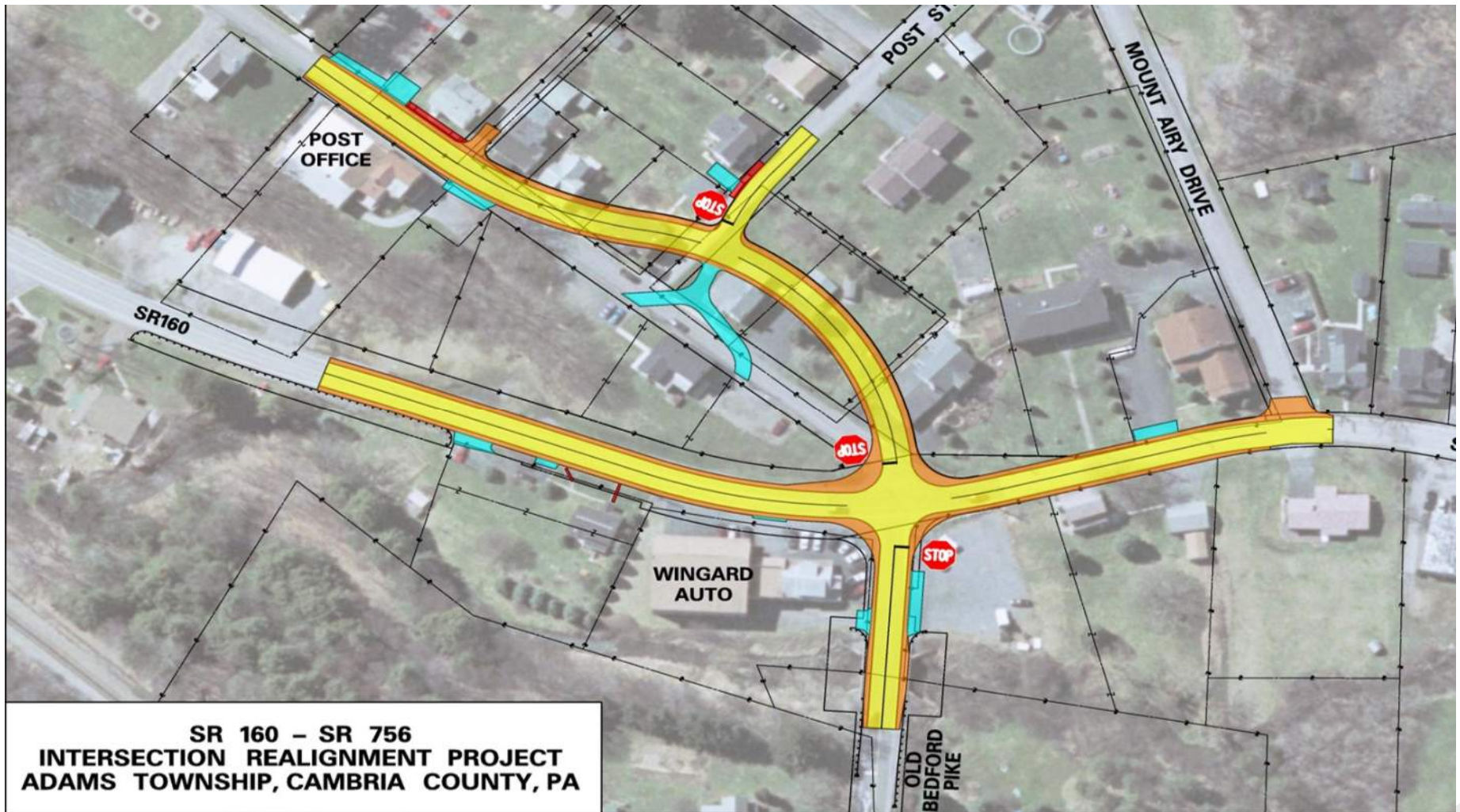
TURNING MOVEMENTS



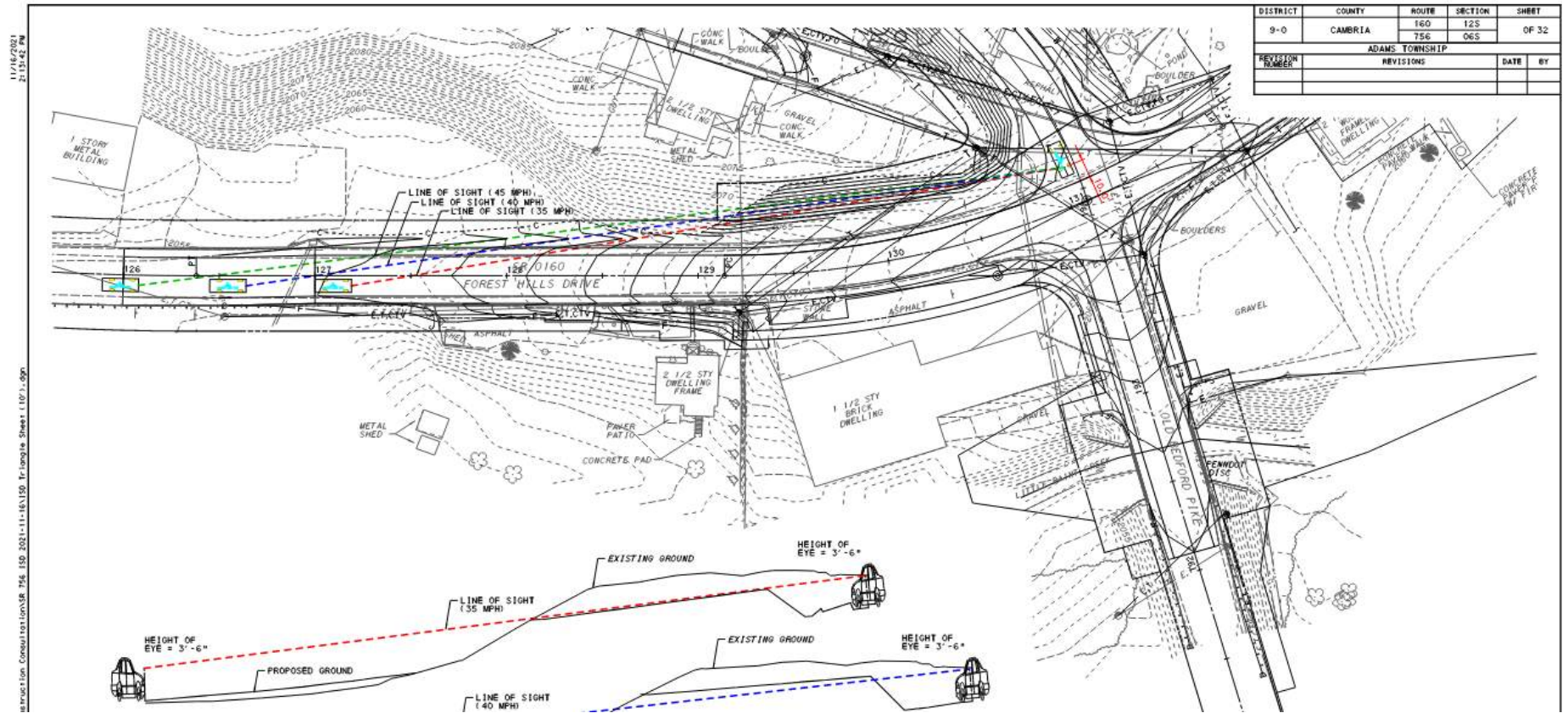
- Guidance issued to improve design consistency of depressed curb openings at minimum use driveways.
 - Located in D-9 Best Practices
- Depressed curb openings are not permitted to encroach onto adjacent property owner's frontage.



PA 756 / PA 160 INTERSECTION – PROPOSED REALIGNMENT



SITE DISTANCE



11/14/2021 2:15:42 PM
 Instruction: Consult 10015001SR_756_1SD_2021-11-16\11SD_Tri-Longline_Sheet_110711.dgn



SIGHT DISTANCE

- Designer only used a 10 ft offset instead of the 14.5 ft minimum offset for determining Intersection Sight Distance
- Went through PM, L&G and Safety Committee review
- Submissions were prepared and reviewed prior to D9 Sight Distance Guidance issued April 2018.
- ROW claim was reopened to take permanent ROW to lay back slope further.



SIGHT DISTANCE CALCULATIONS

Public Road

- Set Up:
 - Object Height – 3.5'
 - Driver's Eye Height
 - 3.5' Car
 - 7.6' Truck
 - Decision Point – **14.5'** from edge of major road travel lane
 - Measurement is taken along the approaching vehicles path of travel

Non-Public Road

- Set Up:
 - Object Height – 3.5'
 - Driver's Eye Height – 3.5'
 - Decision Point – **10'** from edge of major road travel lane
 - Measurement is taken along the approaching vehicles path of travel

(Sight Distance to be evaluated with Form M-950S)



SIGHT DISTANCE



As designed cut slope with incorrect offset for determining ISD.



Slope corrected to increase sight distance.



SIGHT DISTANCE



- Stopping Sight Distance impeded by new cut slope.
- Slope to be cut back during spring 2022 construction season.



SIGHT DISTANCE

- Sight distance exiting Post Office parking lot and adjacent rental property driveway reduced due to curve geometry
- These driveways were not evaluated for sight distance during design



SIGHT DISTANCE

Sight distance looking left



- Sight distance limited by front porch for vehicles leaving the renters and post office driveways.
- ROW claim will be reopened to remove house to open up sight distance.



SIGHT DISTANCE



Revised ROW plan required to remove house and relocate driveway.



SIGHT DISTANCE - ITEMS TO REMEMBER MOVING FORWARD

- For projects that have a change in an intersection alignment and/or footprint, the goal will be 5mph above the ISD.
- All existing intersections/driveways will have photo documentation.
- All driveways shall be evaluated during design throughout project limits for sight distance.
- Show profile of sight line. (Design speed and design speed +5mph)
- Label all dimensions on plans.
- PMs need to strive to have all safety comments including sight distance, turning movements, etc. documented within the submission before the review of the PM3.
- Increased Training



DISTRICT ADVERTISEMENT SUMMARY

2022 & 2023 (State Projects)

- 2 Engineering/Environmental Open End
- 2 Construction Inspection Open Ends
- 5 Structure Agreements
- 2 Structure Agreements (2 Bridge Projects)
- 1 Structure Agreement (4 Bridge Projects)
- 1 Roadway Agreement

13 Total Agreements



DISTRICT OPEN END AGREEMENTS

1 – Engineering/Environmental Open End

- Engineering Emphasis
- \$2 Million
- Advertisement: July 2022
- Execution Anticipated: October 2022

1 – Engineering/Environmental Open End

- Environmental Emphasis
- \$2 Million
- Advertisement: October 2022
- Execution Anticipated: January 2023

2 - Inspection Open End Agreements

- Inspection Emphasis
- \$2 Million each
- Advertisement: September 2022
- Execution Anticipated: December 2022



STATE PROJECTS

BEDFORD COUNTY

1 Agreement – 1 Highway Project



US 30 - BREEZEWOOD TO EVERETT



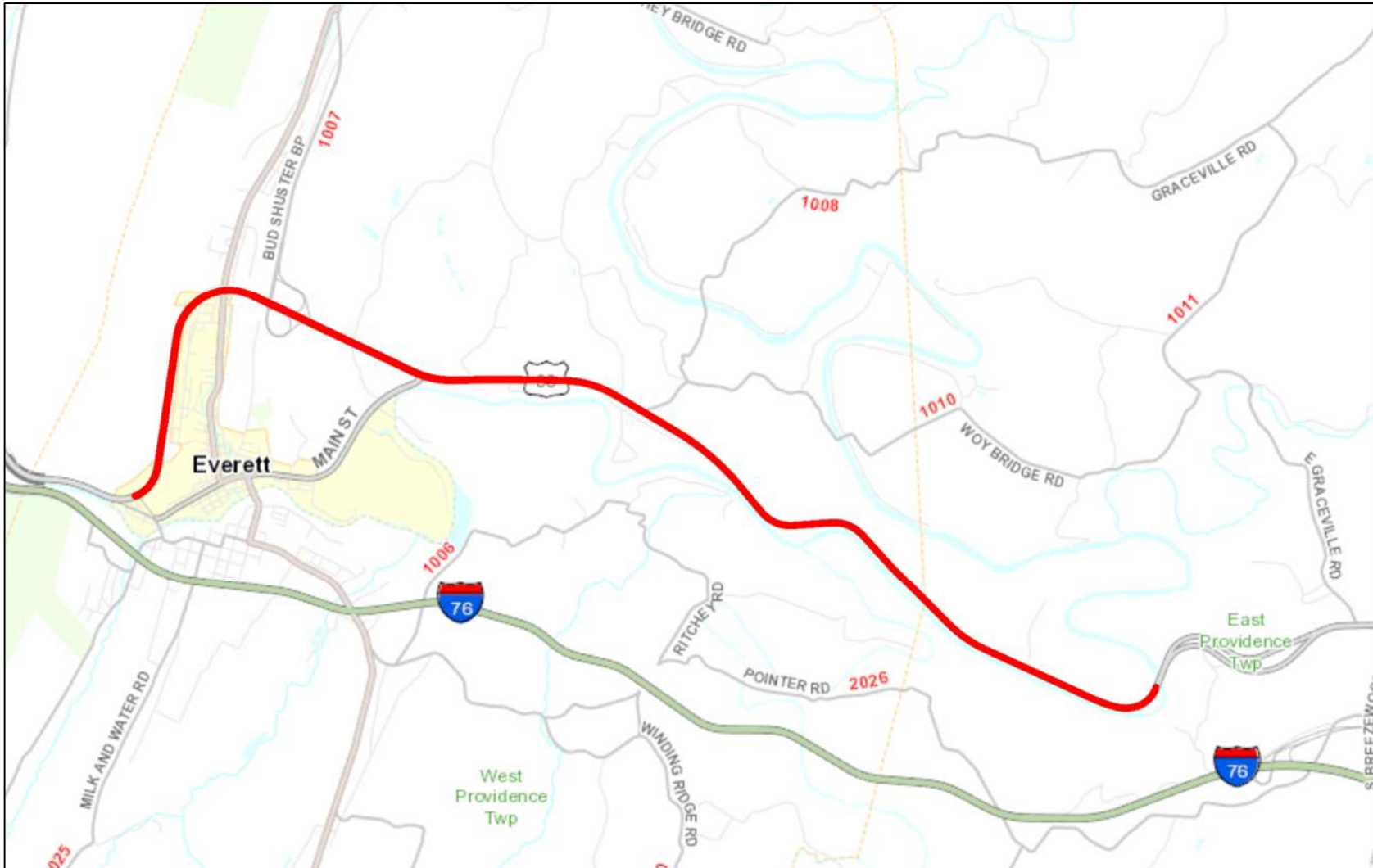
Scope: Resurfacing On US 30 (Lincoln Highway) from the end of the 4-lane west of Breezewood to the Juniata River Bridge in Townships of East and West Providence and Everett Borough, Bedford County

Construction Estimate: \$5.0 - \$10.0 Million

Anticipated Bid Opening: 4th Quarter 2025



US 30 - BREEZEWOOD TO EVERETT



BLAIR COUNTY

1 Agreement – 2 Bridge Projects



SR 4027 S EAGLE VALLEY RD OVER CALIFORNIA RUN



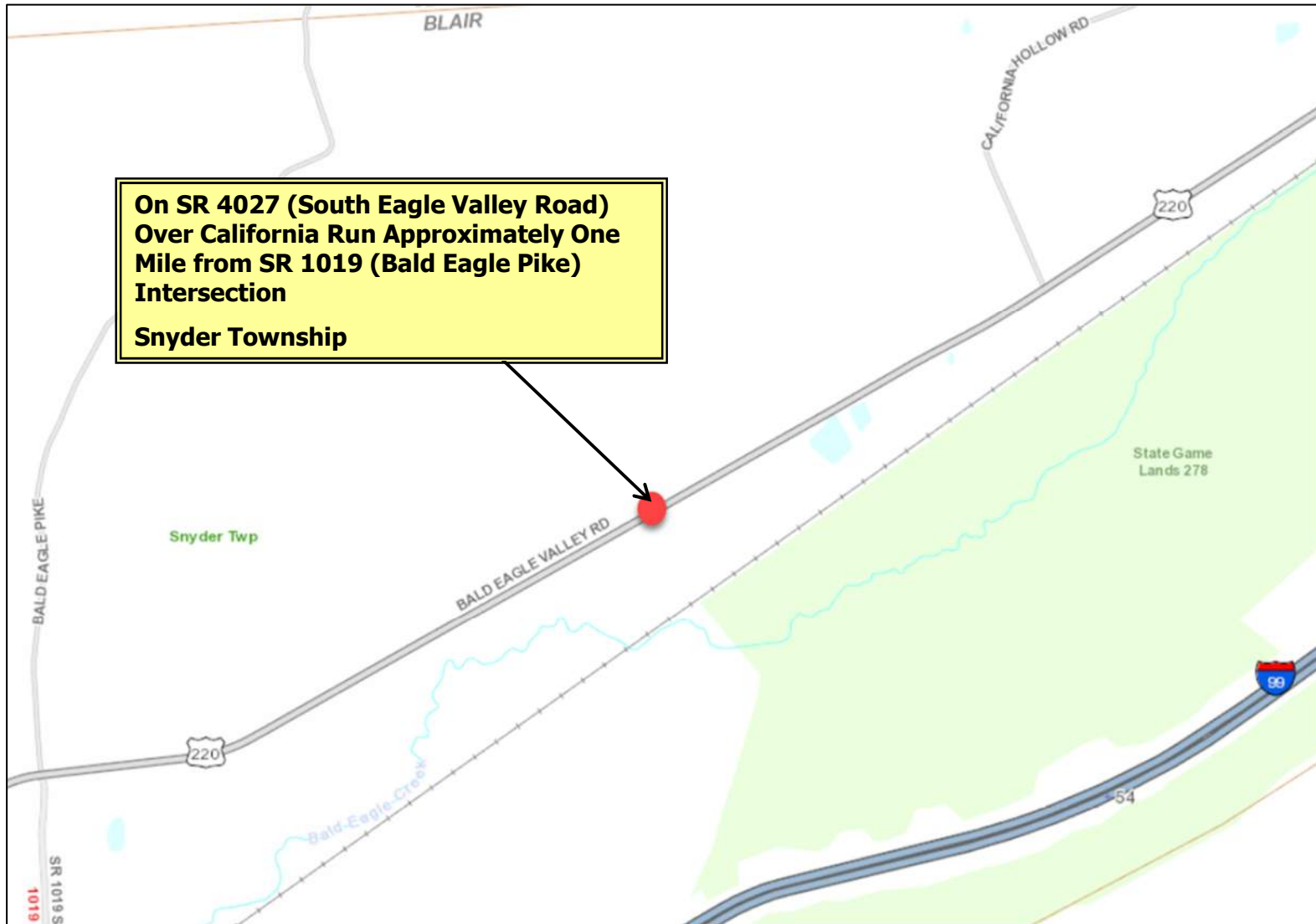
Scope: Bridge replacement on SR 4027 (South Eagle Valley Road) over California Run approximately one mile from the SR 1019 (Bald Eagle Pike) intersection in Snyder Township, Blair County

Construction Estimate: \$1.0 - \$5.0 Million

Anticipated Bid Opening: 3rd Quarter 2026



SR 4027 S EAGLE VALLEY RD OVER CALIFORNIA RUN



SR 4033 DECKER HOLLOW RD OVER VANSCHOYOC RUN



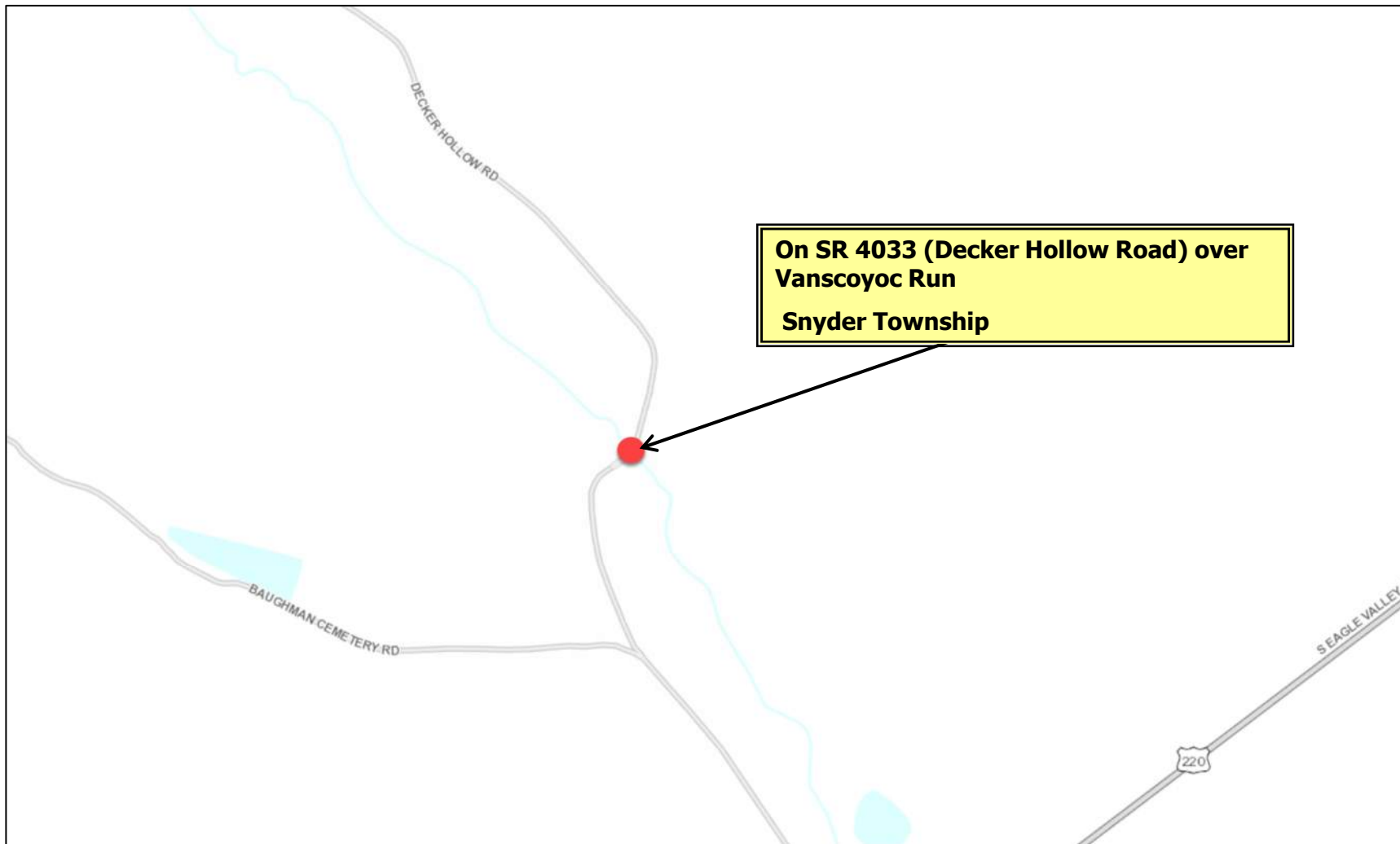
Scope: Bridge replacement on SR 4033 (Decker Hollow Road) over Vanscoyoc Run in Snyder Township, Blair County

Construction Estimate: \$1.0 - \$5.0 Million

Anticipated Bid Opening: 3rd Quarter 2026



SR 4033 DECKER HOLLOW RD OVER VANSCOYOC RUN



CAMBRIA COUNTY

1 Agreement – 1 Bridge Project



PA 160 OVER TRIBUTARY OF LITTLE CONEMAUGH RIVER



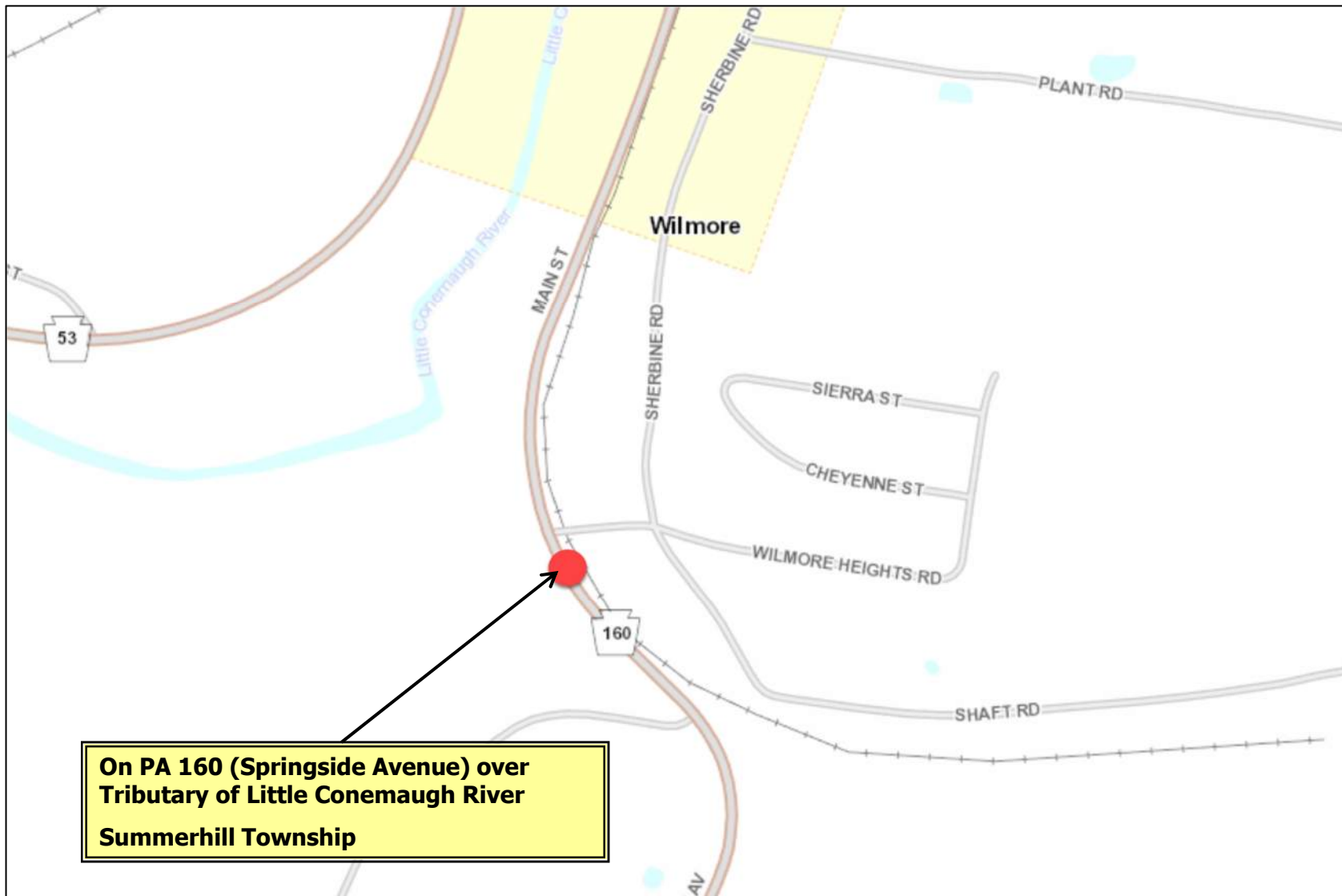
Scope: Culvert replacement on PA 160 (Springside Avenue) over Tributary of Little Conemaugh River near the intersection of T-393 (Wilmore Heights Road) in Summerhill Township, Cambria County

Construction Estimate: Less than \$1.0 Million

Anticipated Bid Opening: 1st Quarter 2026



PA 160 OVER TRIBUTARY OF LITTLE CONEMAUGH RIVER



HUNTINGDON COUNTY

1 Agreement – 1 Bridge Project



PA 35 OVER TRIBUTARY OF TROUGH SPRING BRANCH



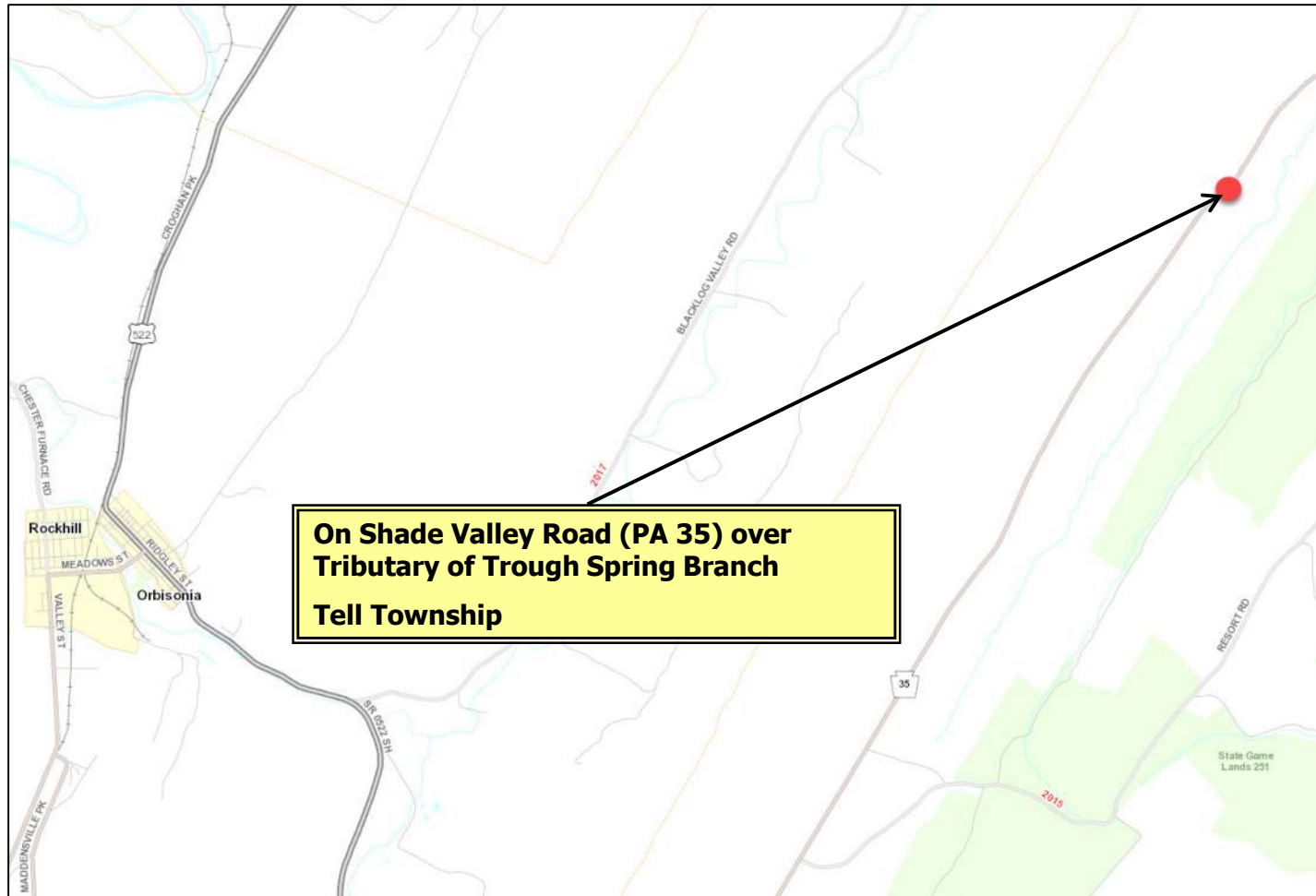
Scope: Culvert replacement on PA 35 (Shade Valley Road) over Tributary of Trough Spring Branch in Tell Township, Huntingdon County.

Construction Estimate: Less than \$1.0 Million

Anticipated Bid Opening: 3rd Quarter 2026



PA 35 OVER TRIBUTARY OF TROUGH SPRING BRANCH



SOMERSET COUNTY

1 Agreement – 4 Bridge Projects



SR 1017 NEW BALTIMORE RD OVER BREASTWORK RUN #1



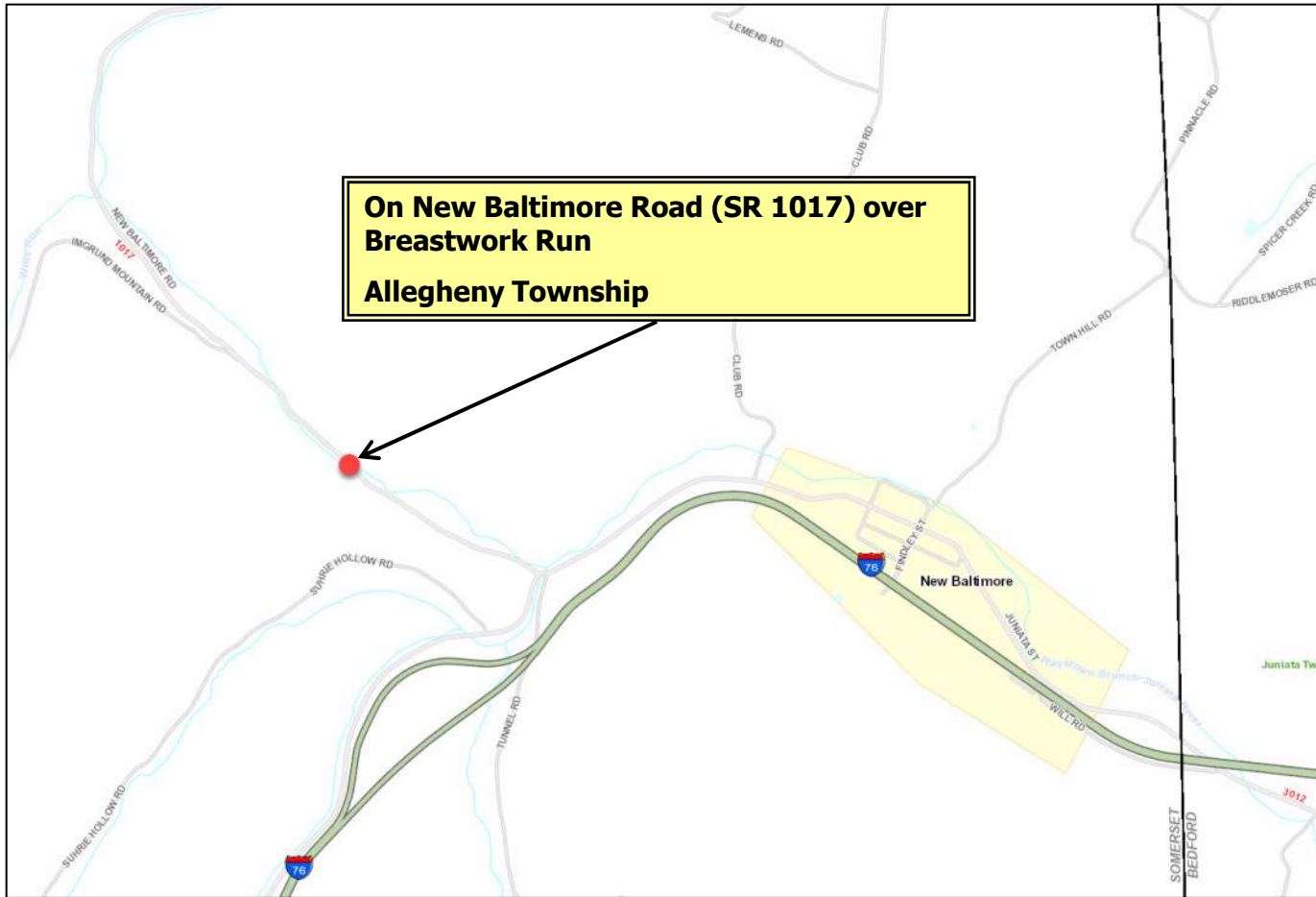
Scope: Bridge replacement on SR 1017 (New Baltimore Road) over Breastwork Run in Allegheny Township, Somerset County.

Construction Estimate: \$1.0 - \$5.0 Million

Anticipated Bid Opening: 3rd Quarter 2025



SR 1017 NEW BALTIMORE RD OVER BREASTWORK RUN



SR 1017 NEW BALTIMORE RD OVER BREASTWORK RUN #2



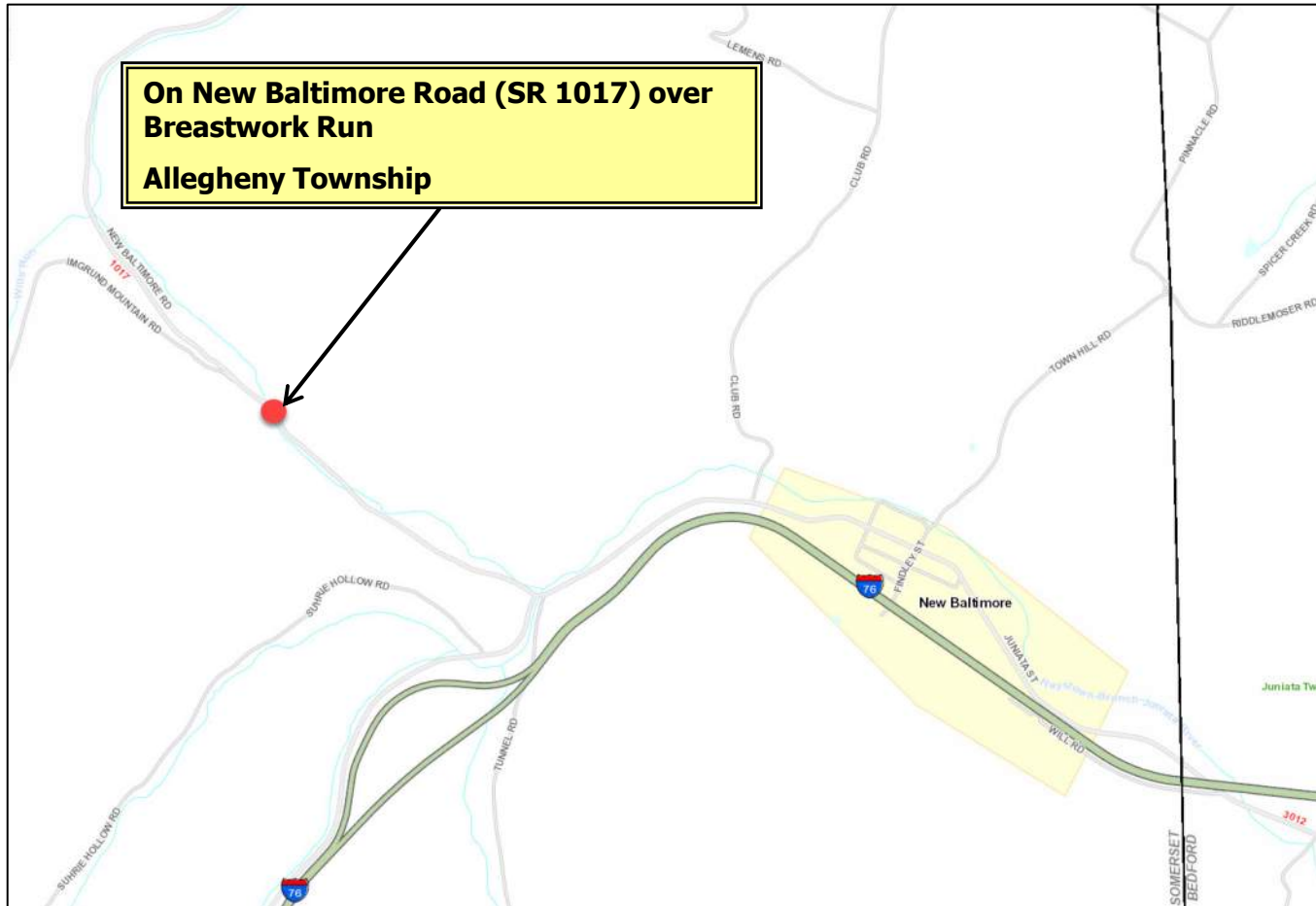
Scope: Bridge replacement on SR 1017 (New Baltimore Road) over Breastwork Run in Allegheny Township, Somerset County.

Construction Estimate: \$1.0 - \$5.0 Million

Anticipated Bid Opening: 3rd Quarter 2025



SR 1017 NEW BALTIMORE RD OVER BREASTWORK RUN #2



SR 1017 NEW BALTIMORE RD OVER TRIBUTARY OF BREASTWORK RUN



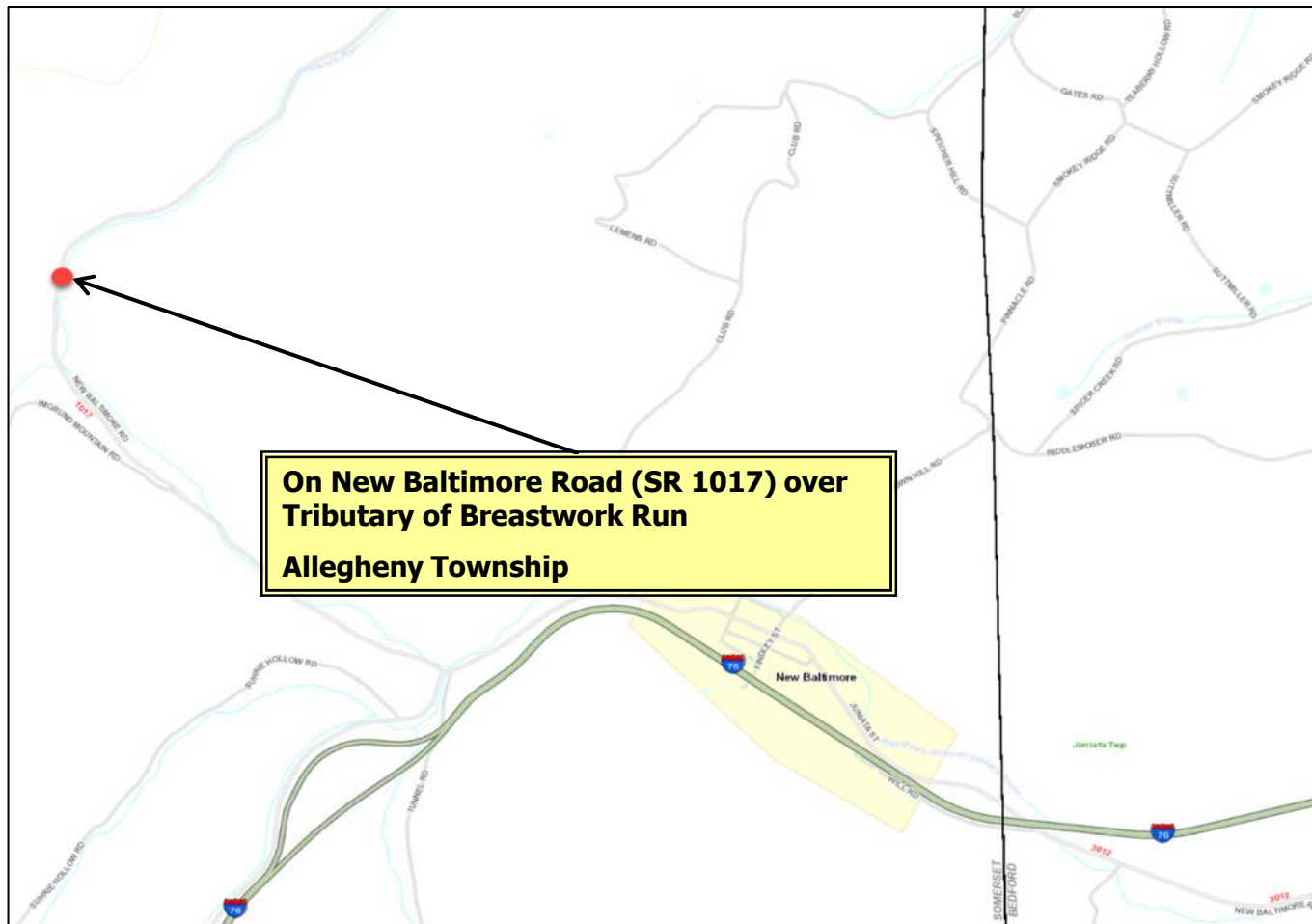
Scope: Bridge replacement on SR 1017 (New Baltimore Road) over a tributary to Breastwork Run in Allegheny Township, Somerset County.

Construction Estimate: Less than \$1.0 Million

Anticipated Bid Opening: 3rd Quarter 2026



SR 1017 NEW BALTIMORE RD OVER TRIBUTARY OF BREASTWORK RUN



SR 1017 NEW BALTIMORE RD OVER WILLS RUN



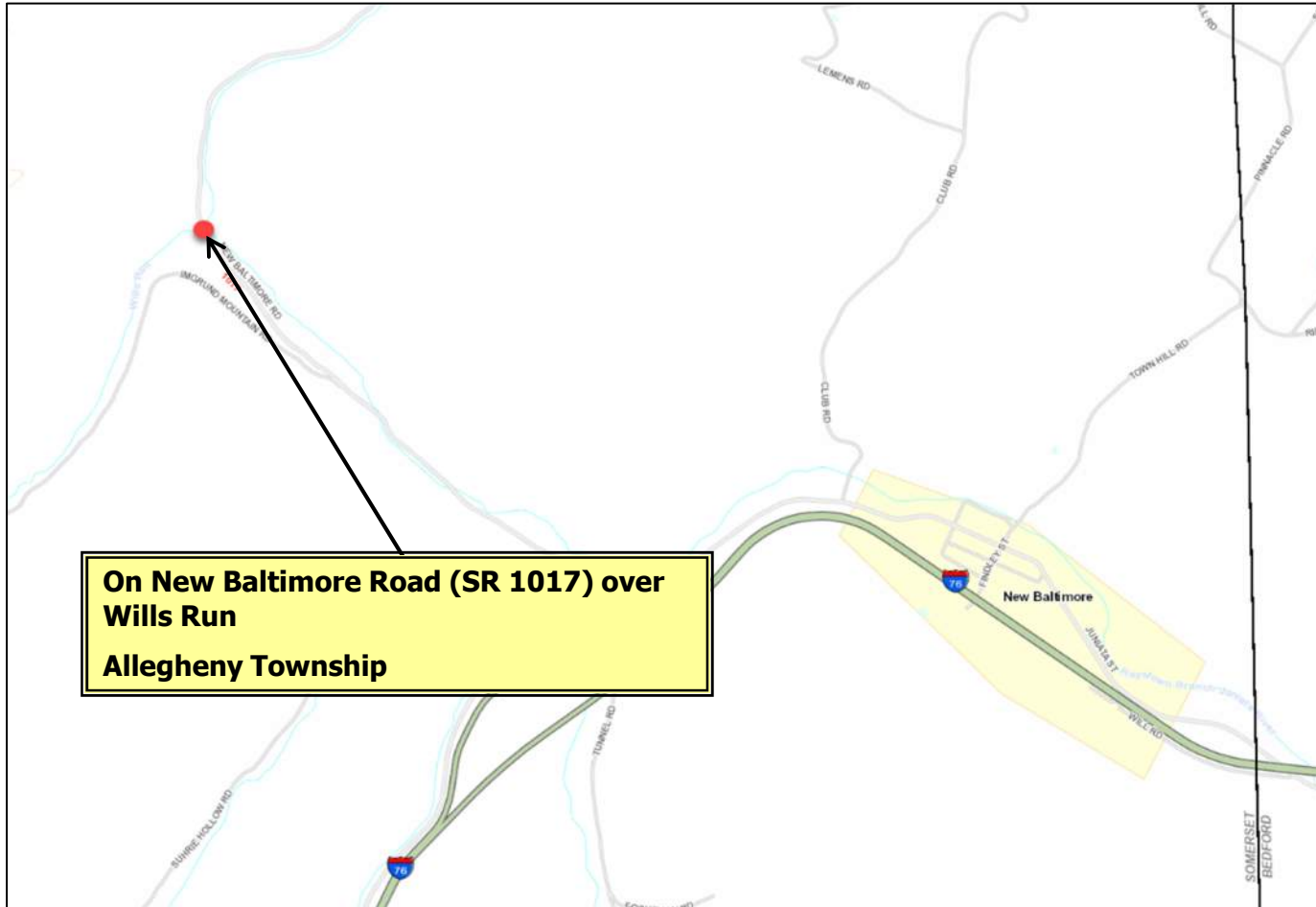
Scope: Bridge replacement on SR 1017 (New Baltimore Road) over Wills Run in Allegheny Township, Somerset County.

Construction Estimate: Less than \$1.0 Million

Anticipated Bid Opening: 3rd Quarter 2026



SR 1017 NEW BALTIMORE RD OVER WILLS RUN



1 Agreement – 1 Bridge Project



SR 2001 OAK DALE RD OVER LAUREL CREEK



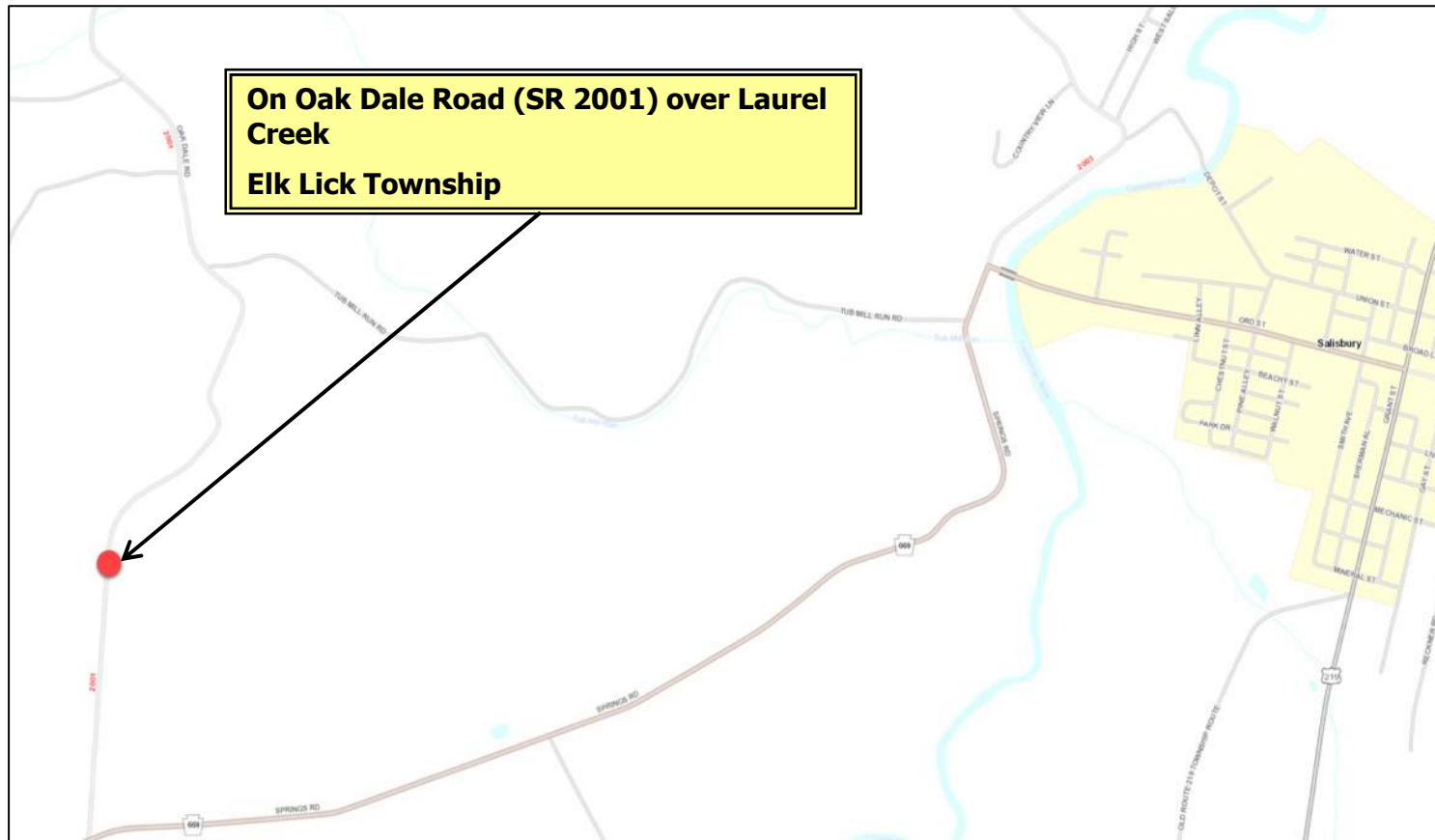
Scope: Bridge replacement on SR 2001 (Oak Dale Road) over Laurel Creek near the intersection of T-323 (Tub Mill Run Road) in Elk Lick Township, Somerset County.

Construction Estimate: Less than \$1.0 Million

Anticipated Bid Opening: 1st Quarter 2026



SR 2001 OAK DALE RD OVER LAUREL CREEK



1 Agreement – 1 Bridge Project



SR 1021 SCHOOL ROAD OVER MILLER RUN



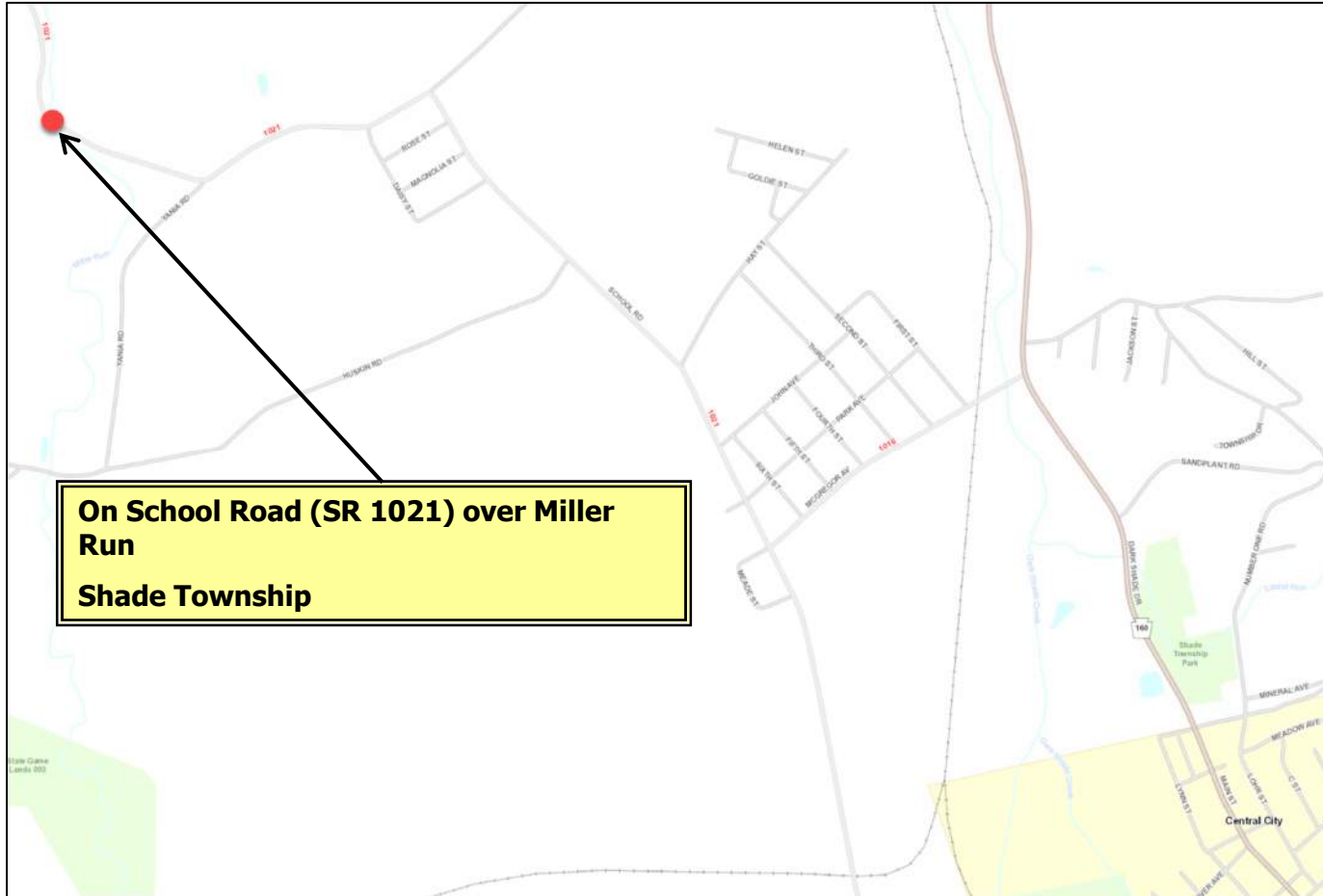
Scope: Bridge replacement on SR 1021 (School Road) over Miller Run near the intersection of Yania Road in Shade Township, Somerset County.

Construction Estimate: Less than \$1.0 Million

Anticipated Bid Opening: 1st Quarter 2026



SR 1021 SCHOOL ROAD OVER MILLER RUN



1 Agreement – 2 Bridge Projects



PA 160 CUMBERLAND HWY OVER BUFFALO CREEK



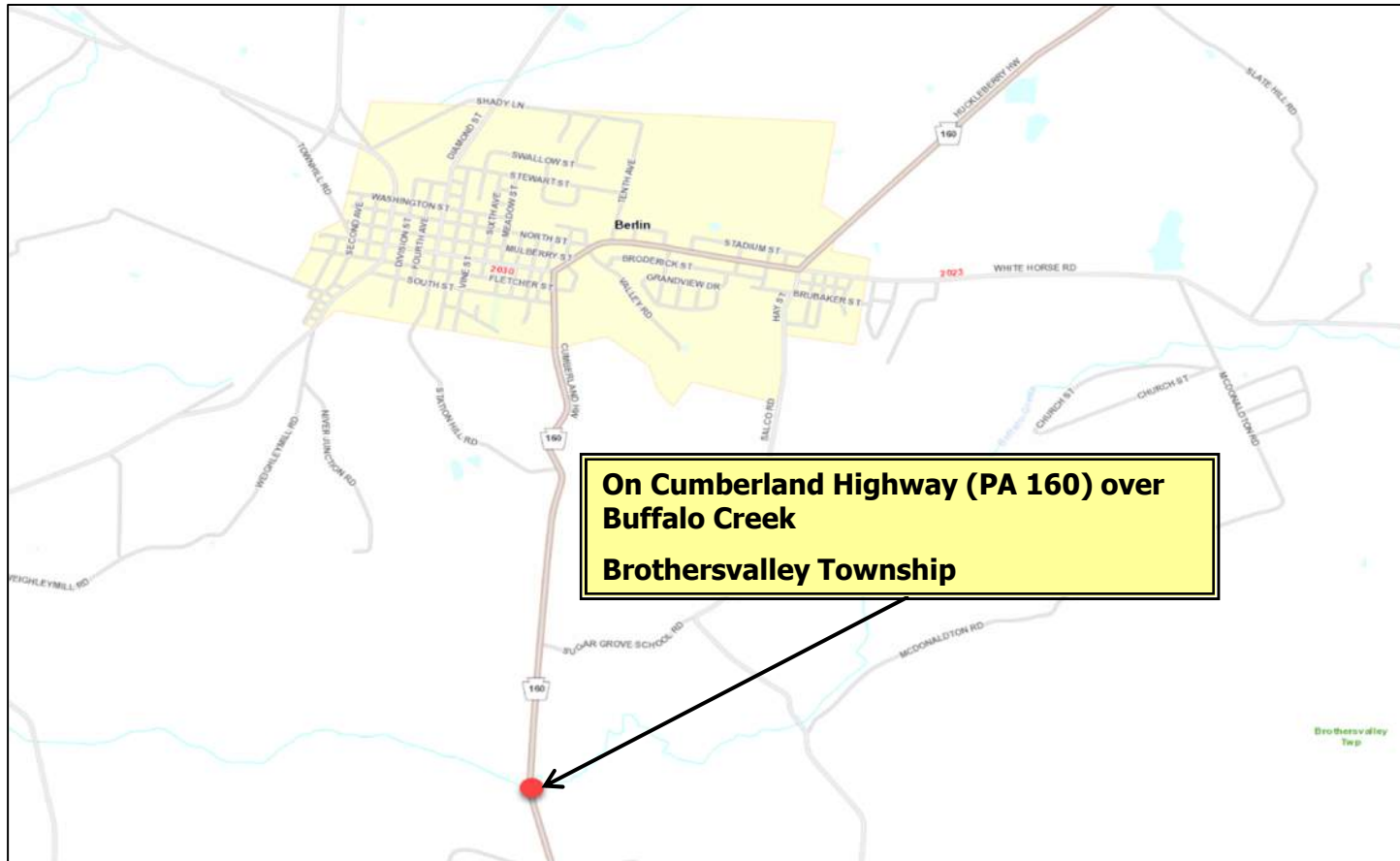
Scope: Bridge replacement on PA 160 (Cumberland Highway) over Buffalo Creek approximately 0.25 miles north of Glennoris School Road in Brothersvalley Township, Somerset County.

Construction Estimate: \$1.0 - \$5.0 Million

Anticipated Bid Opening: 3rd Quarter 2026



PA 160 CUMBERLAND HWY OVER BUFFALO CREEK



SR 3029 COOPER KETTLE HWY OVER MIDDLE CREEK



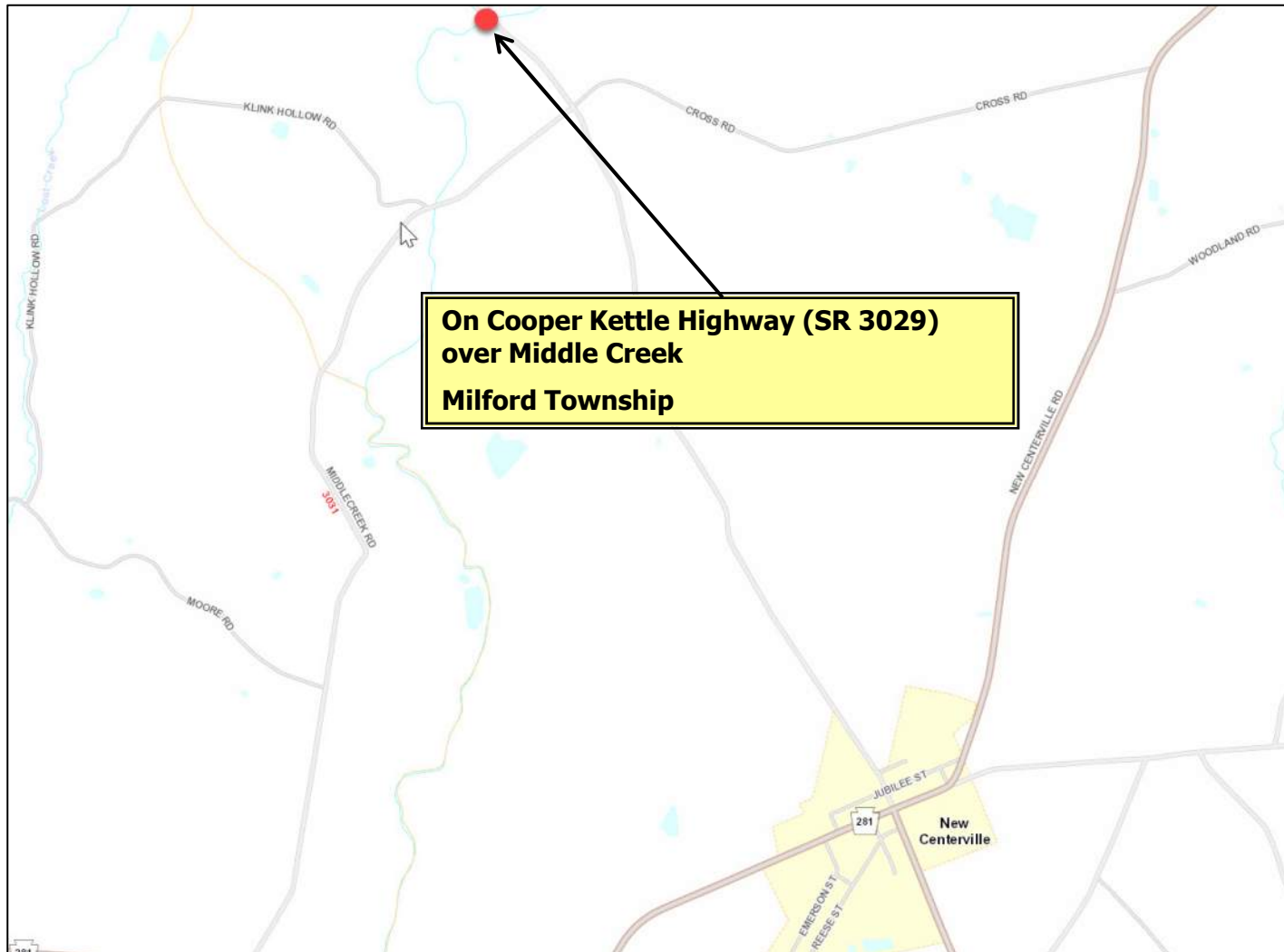
Scope: Bridge replacement on SR 3029 (Cooper Kettle Highway) over Middle Creek near the intersection of T-703 (Chippewa Road) in Milford Township, Somerset County

Construction Estimate: \$1.0 - \$5.0 Million

Anticipated Bid Opening: 3rd Quarter 2026



SR 3029 COOPER KETTLE HWY OVER MIDDLE CREEK



1 Agreement – 1 Bridge Project



SR 2013 PALO ALTO RD OVER GLADDENS RUN



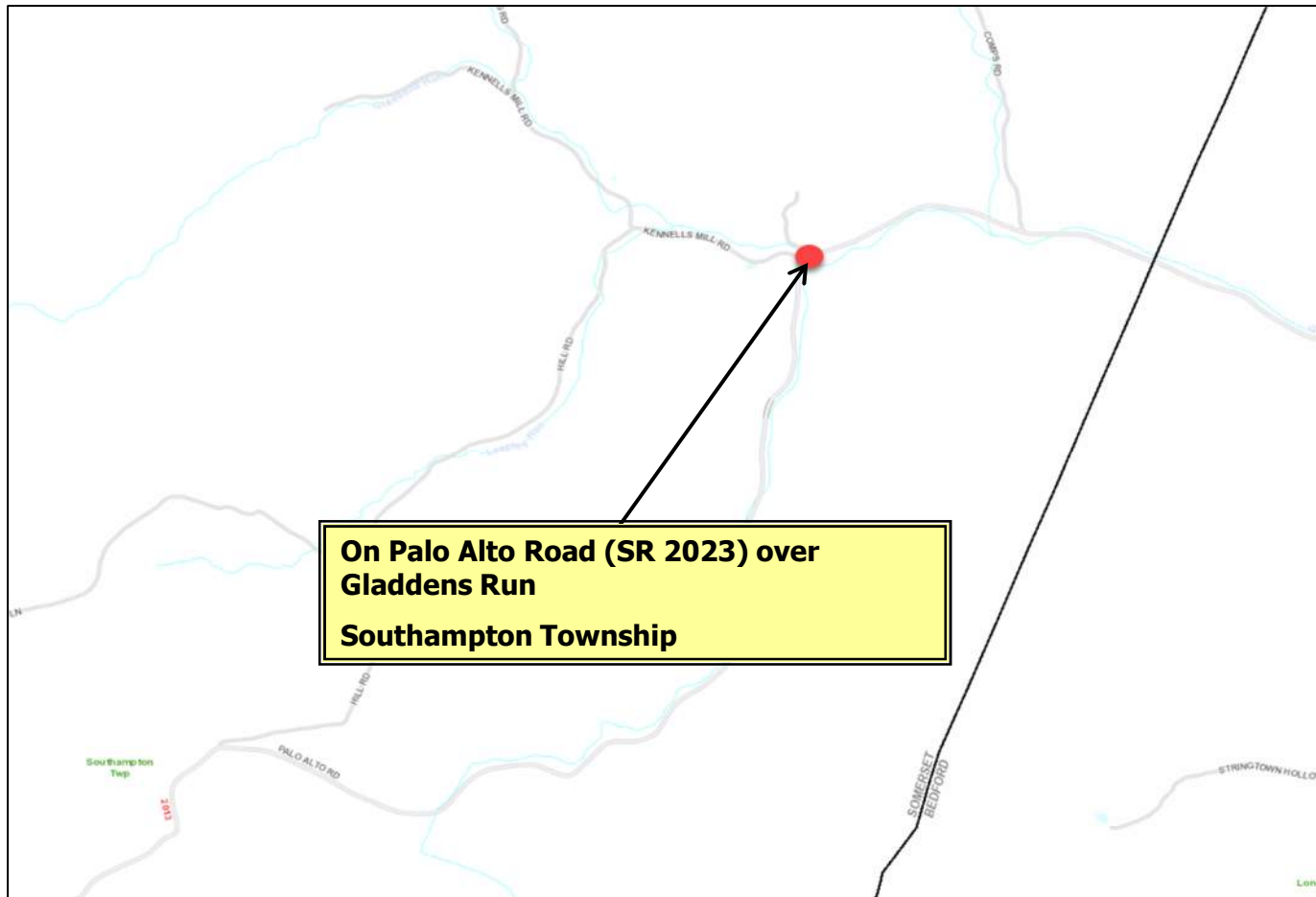
Scope: Bridge replacement on SR 2013 (Palo Alto Road) over Gladdens Run in Southampton Township, Somerset County.

Construction Estimate: Less than \$1.0 Million

Anticipated Bid Opening: 3rd Quarter 2026



SR 2013 PALO ALTO RD OVER GLADDENS RUN



LOCAL PROJECTS

BEDFORD COUNTY

1 Agreement – 2 Bridge Projects



T-705 PINE HILL RD OVER THREE SPRINGS RUN (BRIDGE 1)



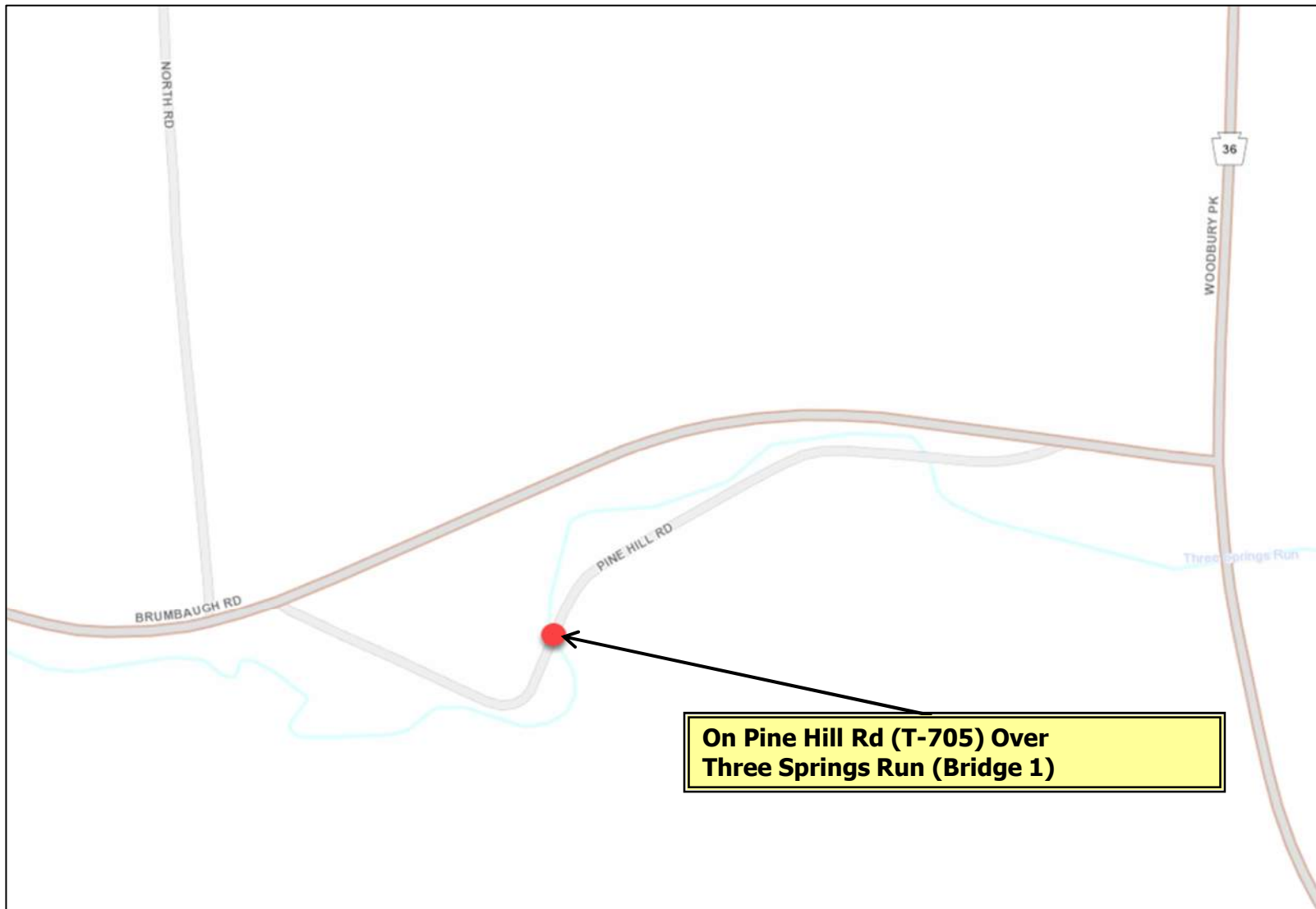
Scope: Bridge replacement on T-705 (Pine Hill Road) over Three Springs Run in South Woodbury Township, Bedford County.

Construction Estimate: \$1.0 - \$5.0 Million

Anticipated Bid Opening: 4th Quarter 2025



T-705 PINE HILL RD OVER THREE SPRINGS RUN (BRIDGE 1)



T-705 PINE HILL RD OVER THREE SPRINGS RUN (BRIDGE 2)



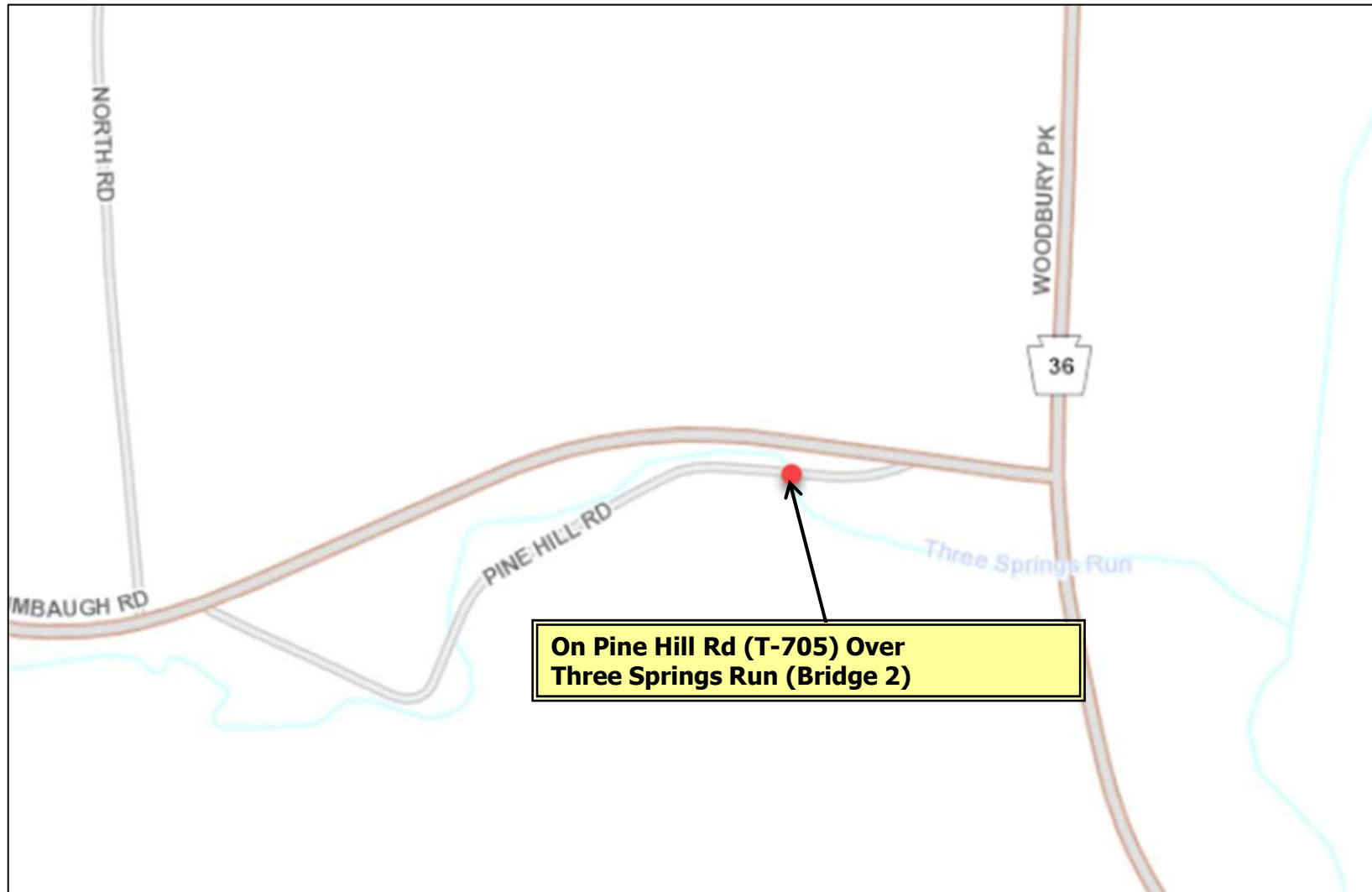
Scope: Bridge Removal on T-705 (Pine Hill Road) over Three Springs Run in South Woodbury Township, Bedford County.

Construction Estimate: Less Than \$1.0 Million

Anticipated Bid Opening: 4th Quarter 2025



T-705 PINE HILL RD OVER THREE SPRINGS RUN (BRIDGE 2)



FULTON COUNTY

T-313 HILL RD OVER TRIBUTARY TO SAWMILL HOLLOW RUN



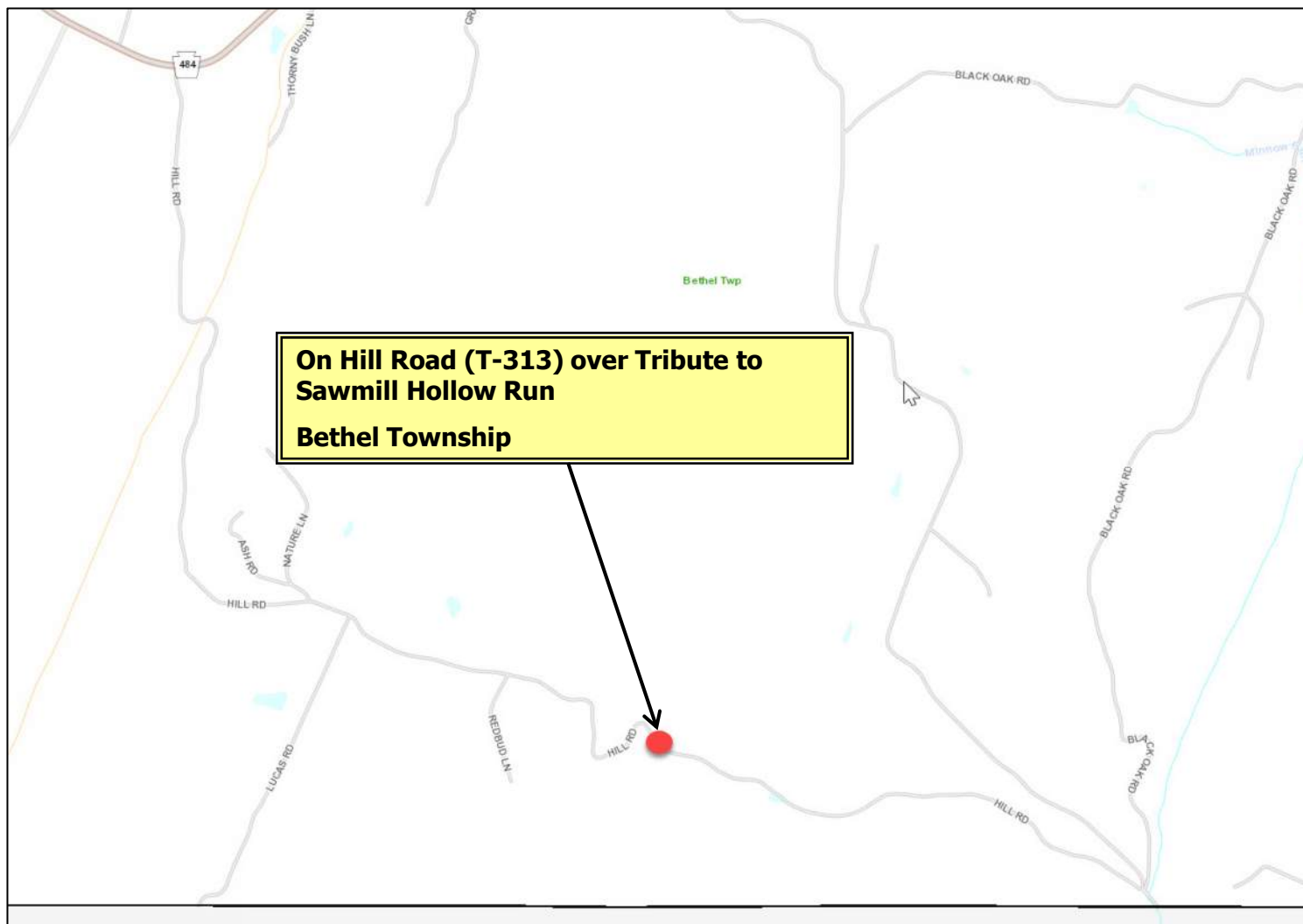
Scope: Bridge replacement on T-313 (Hill Road) over Tributary to Sawmill Hollow Run in Bethel Township, Fulton County.

Construction Estimate: \$1.0 - \$5.0 Million

Anticipated Bid Opening: 4th Quarter 2025



T-313 HILL RD OVER TRIBUTARY TO SAWMILL HOLLOW RUN



HUNTINGDON COUNTY

T-316 APPLEBY RD OVER SHADE CREEK



Scope: Bridge replacement on T-316 (Appleby Road) over Shade Creek in Dublin Township, Huntingdon County.

Construction Estimate: Less than \$1.0 Million

Anticipated Bid Opening: 4th Quarter 2025



T-316 APPLEBY RD OVER SHADE CREEK



SOMERSET COUNTY

T-719 SCHOOLHOUSE RD OVER BRUSH CREEK



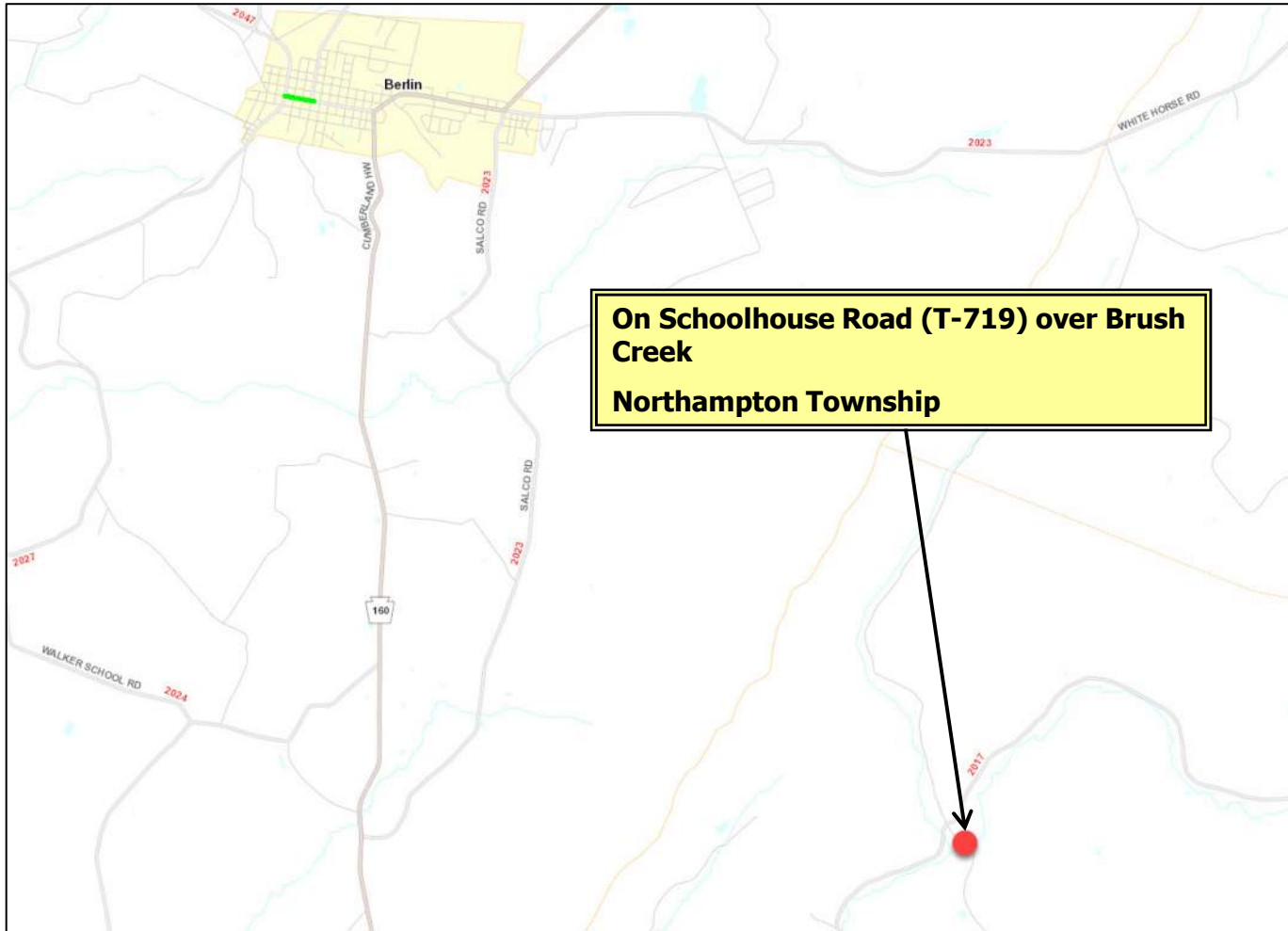
Scope: Bridge replacement on T-719 (Schoolhouse Road) over Brush Creek in Northampton Township, Somerset County.

Construction Estimate: Less than \$1.0 Million

Anticipated Bid Opening: 4th Quarter 2025



T-719 SCHOOLHOUSE RD OVER BRUSH CREEK



Thank You

Questions?

