

# Alternative Impacts Comparison Overview

## HIGHEST & LOWEST IMPACT BY CATEGORY SUMMARY

### Mining & Potential Hazardous Waste



### Aboveground Historic Resources



### Archaeology



### Engineering



### Socio-Economic



### Natural Resources



● Lowest Impact per category by alignment  
● Highest Impact per category by alignment

Natural Resources	DU	DU Shift	E	E Shift
<b>Forestland</b>	<b>461.6</b>	<b>460.5</b>	<b>438.3</b>	<b>437.2</b>
Deciduous Forestland (acres)	203.2	201.3	272.5	270.6
Evergreen Forestland (acres)	1.1	1.9	8.4	9.2
Mixed Forestland (acres)	257.2	257.2	157.4	157.4
<b>Farmland</b>				
Productive Cropland/Pasture (acres)	71.4	91.5	53.8	73.9
Maple Sugar Production Forest (acres)	23.7	23.7	0.1	0.1
Productive Farms (#)	11	11	8	8
Prime Farmland Soils (acres)	39.0	39.0	26.3	26.3
Soils of Statewide Importance (acres)	141.6	148.4	120.8	127.7
Preferential Tax Assessment - PA only (acres)	71.0	71.0	3.7	3.7
<b>Other</b>				
FEMA 100-Year Flood Zone (acres)	12.3	12.3	7.1	7.1
Potential Bat Hibernacula (#)	3	3	-	-

# Alternative Impacts Comparison Overview

## HIGHEST & LOWEST IMPACT BY CATEGORY SUMMARY

### Mining & Potential Hazardous Waste



### Aboveground Historic Resources



### Archaeology



### Engineering



### Socio-Economic



### Natural Resources




● Lowest Impact per category by alignment  
● Highest Impact per category by alignment

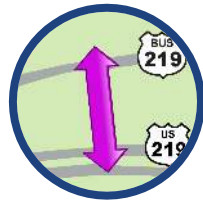
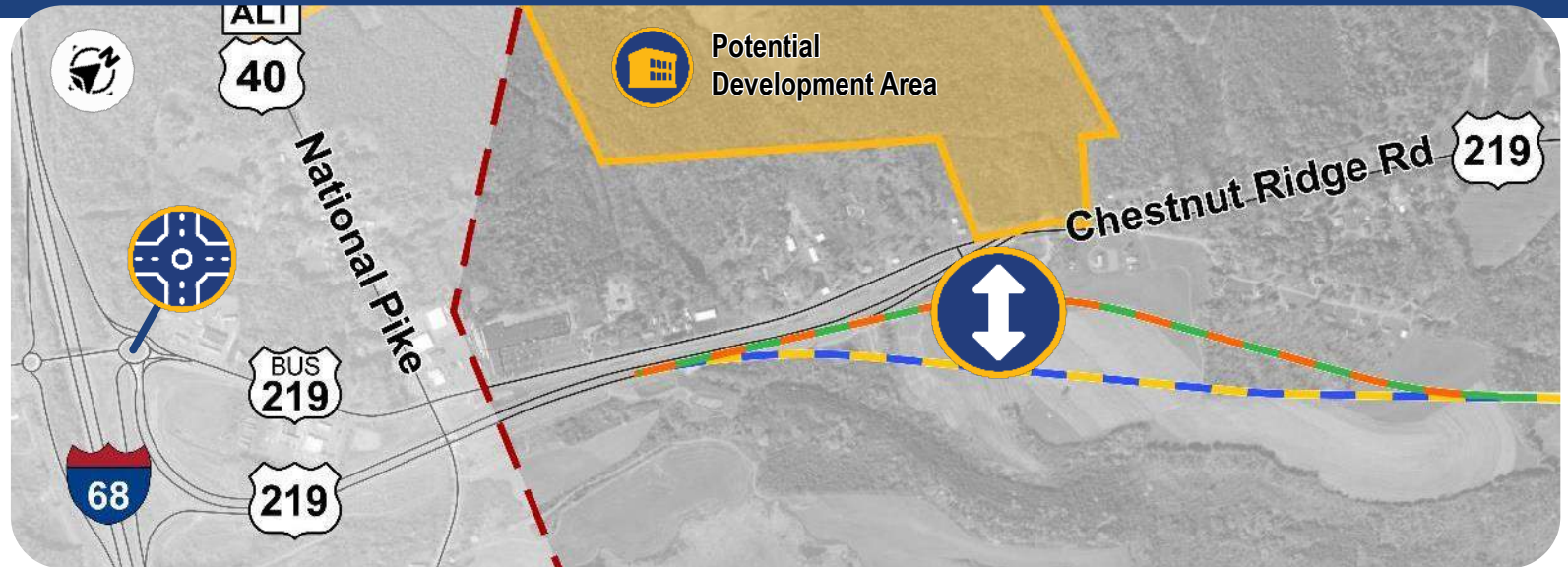
Natural Resources	DU	DU Shift	E	E Shift
<b>Wetland</b>	<b>14.3</b>	<b>14.4</b>	<b>12.8</b>	<b>12.7</b>
Palustrine Emergent PEM	4.3	4.4	3.3	3.2
Palustrine Emergent/Palustrine Forested PEM/PFO	0.5	0.5	0.5	0.5
Palustrine Forested PFO	5	5	4.6	4.6
Palustrine Forested/Palustrine Scrub Shrub PFO/PSS	2.6	2.6	2.6	2.6
Palustrine Open Water POW	1.7	1.7	1.5	1.5
Palustrine Scrub Shrub PSS	0.3	0.3	0.3	0.3
Palustrine Open Water POW	0	0	0	0
<b>Streams</b>	<b>29,172</b>	<b>29,549</b>	<b>29,295</b>	<b>29,675</b>
Perennial Streams (#/linear feet)	42 / 17,555	42 / 17,882	44 / 19,935	44 / 20,262
Intermittent Stream (#/linear feet)	28 / 8,721	29 / 8,771	26 / 6,710	27 / 6,763
Ephemeral Streams (#/linear feet)	12 / 2,232	12 / 2,232	10 / 1,985	10 / 1,985
Perennial and Intermittent (#/linear feet)	2 / 595	2 / 595	2 / 595	2 / 595
Perennial and Ephemeral (#/linear feet)	1/69	1/69	1 / 69	1 / 69



# Potential Direct Connection in Maryland

The project team wants to gauge public interest to understand if a connection should be evaluated as part of this project, or if it should be considered as a potential future improvement.

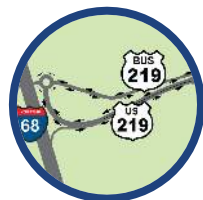
- The project team has coordinated with Garrett County and Grantsville to gain an understanding about potential economic development in the area north of US 40 and west of Business 219.
- There are currently no final plans for development in this area.
- The  icon shows the general location of a potential connection from new US 219 to an area designated for future economic development in Garrett County's 2022 Comprehensive Plan.



**Is a direct connection needed? If so, is it needed right now?**



A direct connection could be evaluated between a new US 219 alignment and existing Business 219



**Or perhaps a direct connection can be evaluated later when future development and other conditions in the area are clarified.**



If a direct connection is not needed, drivers can use the existing roundabout connection where the southern end of the new US 219 alignment ties into Business 219



# November Public Involvement - Results

# Q8

Please rank the alternatives in order of your preferred to least preferred (With 1 being your most preferred)

 **DU**



**DU Shift**



**E**



 **E Shift**



● Most Preferred    
 ● 2<sup>nd</sup> Preferred    
 ● 3<sup>rd</sup> Preferred    
 ● Least Preferred



# Preliminary Avoidance and Minimization Modifications

# Preliminary Avoidance and Minimization

PennDOT & SHA have been evaluating modifications to the Detailed Study Alternatives to avoid and/or minimize potential impacts to environmental and cultural resources, including wetlands/watercourse, farmlands, historic properties, Section 4(f)/2002 resources and SGLs.

Specific resources, as shown on the following slides, include: Historic Resources, Section 4(f) and Section 2002

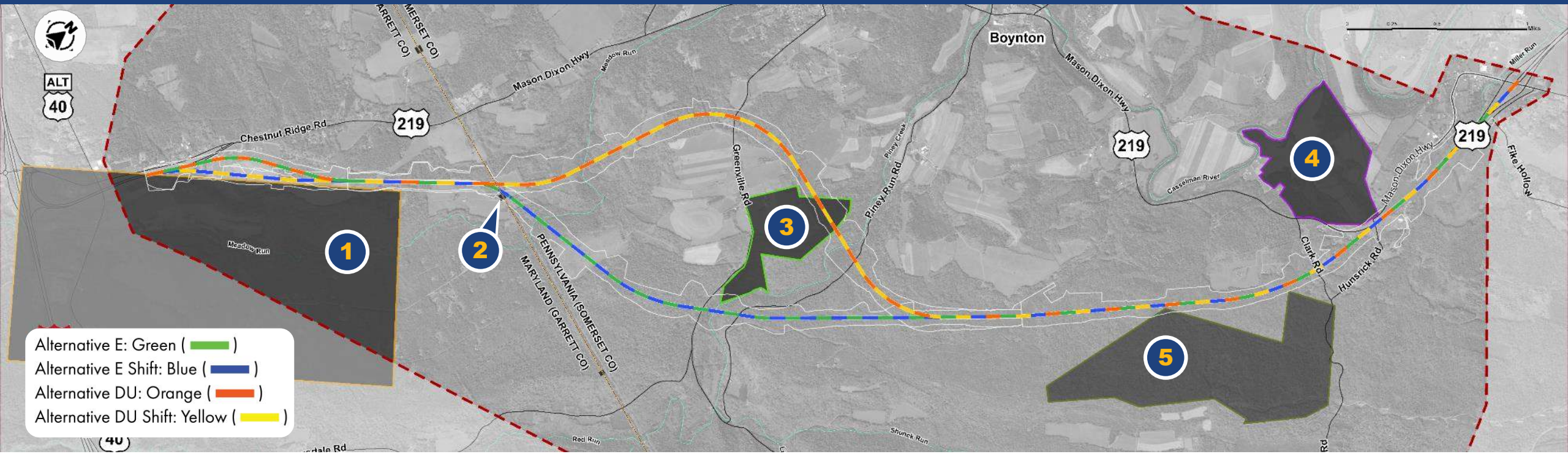
- Historic Resources/Section 4(f)/Section 2002
  1. Tomlinson Inn and Little Meadows
  2. Pennsylvania/Maryland Mason-Dixon Marker
  3. Deal Farm
  4. Miller Farm
- Game lands/Section 4(f)/Section 2002
  5. Pennsylvania SGL 231

These avoidance/minimization measures are shown on the following slides.





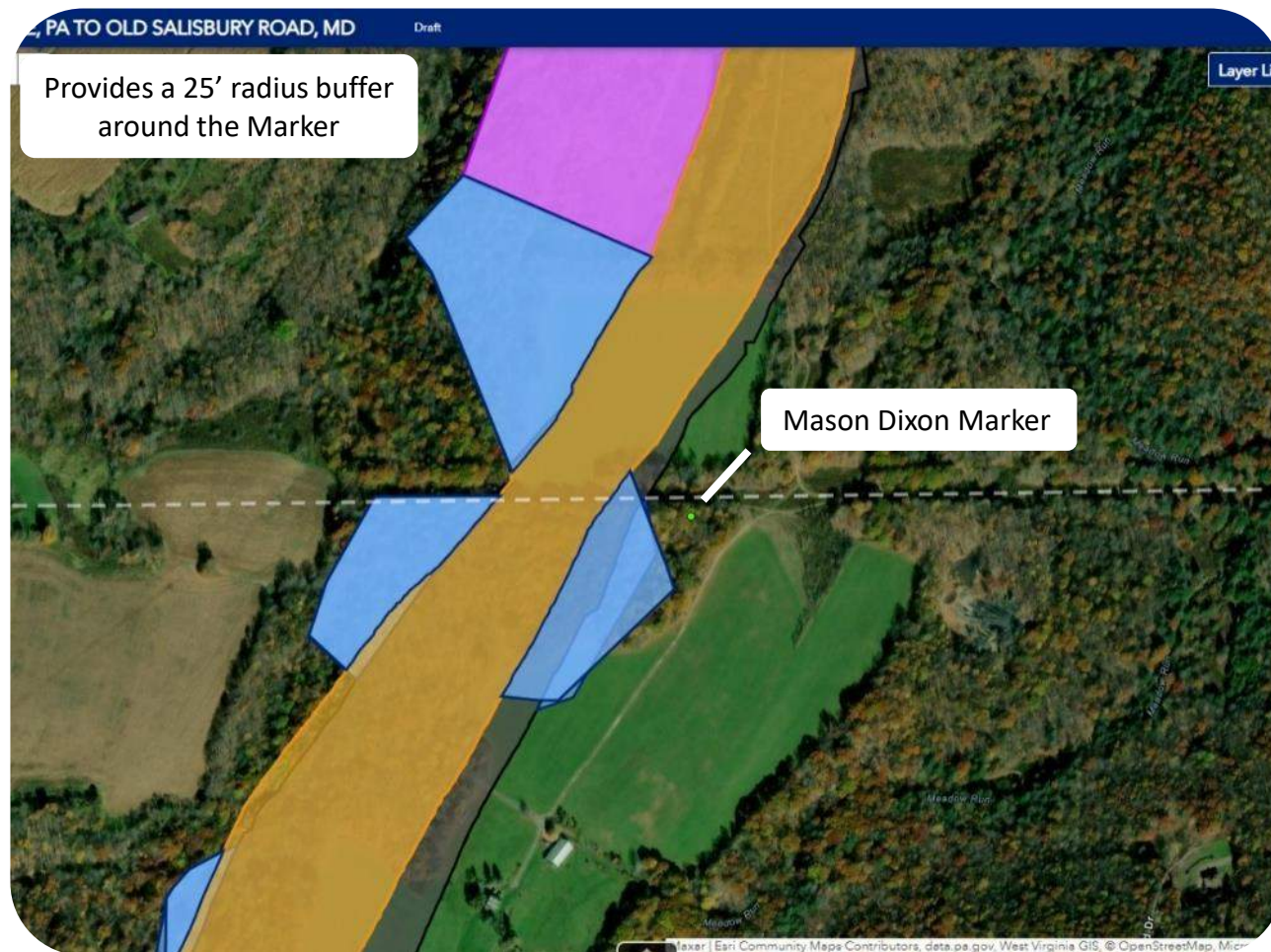
# Detailed Study Alternatives – DU, DU-SHIFT, E, E-SHIFT



- 1** Tomlinson Inn & Little Meadows
- 2** Mason Dixon Marker
- 3** Deal Farm
- 4** Miller Farm
- 5** Pennsylvania State Game Land



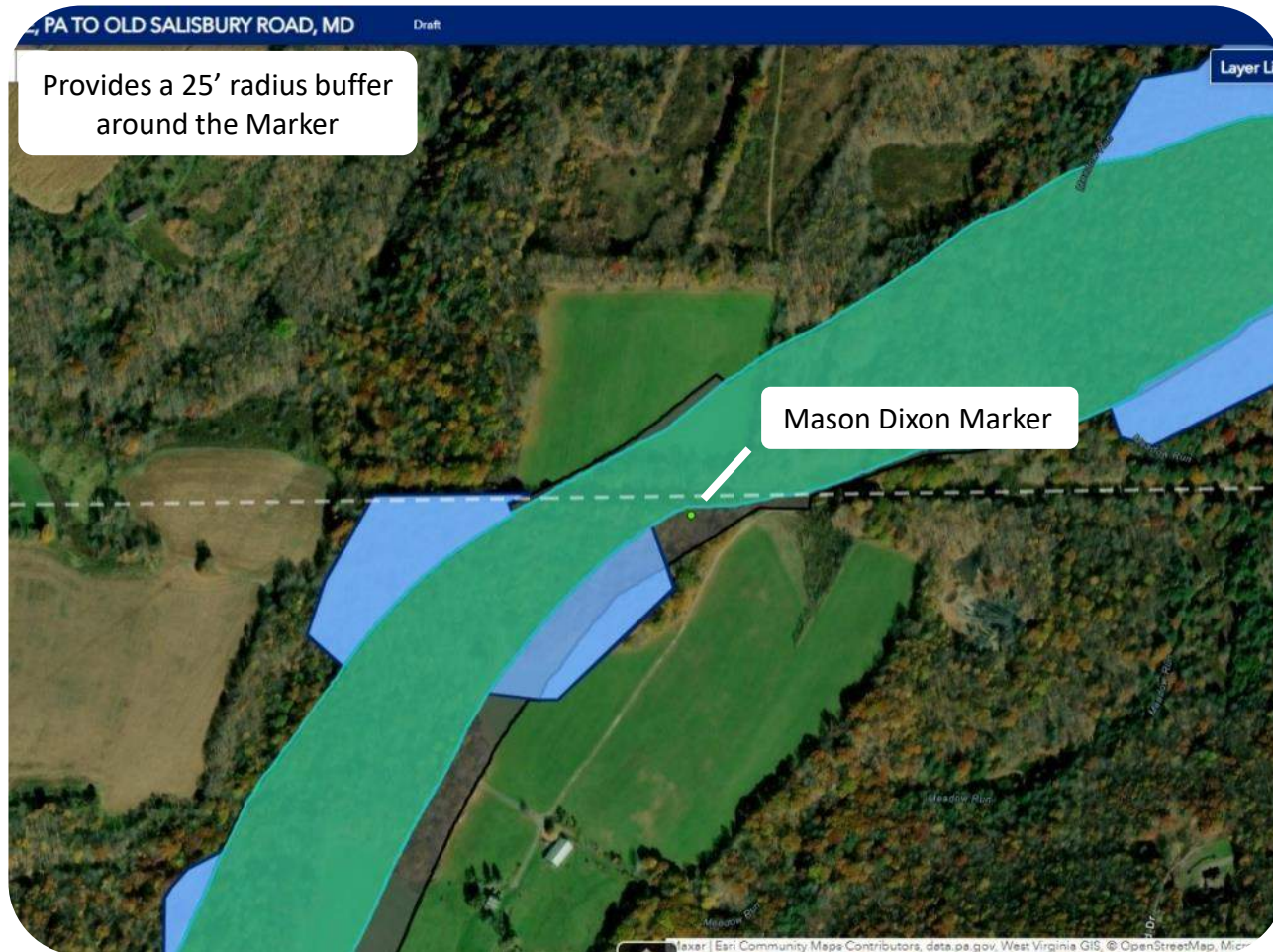
## 2. Mason Dixon Marker Modification Alternative



### DU / DU-Shift & DU Modified / DU-Shift Modified

- The alignment was generally shifted westward away from the Marker 60'.
- The median width varies near the Marker and is 44' minimum.
- The median width transitions back to 60' south of the Meadow Run Bridge.
- The LOD transitions from 50' beyond the cut/ fill lines to 100' beyond the cut/ fill lines at the PA/MD state line.

## 2. Mason Dixon Marker Modification Alternative



### E / E-Shift & E Modified / E-Shift Modified

- The alignment was generally shifted westward away from the Marker between 10' and 60'.
- The median width varies near the Marker and is 44' minimum.
- The median width transitions back to 60' north of the Meadow Run Bridge.
- The LOD transitions from 50' beyond the cut/ fill lines to 100' beyond the cut/ fill lines at the PA/MD state line.



# Refined Alternatives = “Modified”

- DU is now DU Modified
- DU-Shift is now DU-Shift Modified
- E is now E Modified
- E-Shift is now E-Shift Modified

These four alternatives will be advanced in the DEIS.

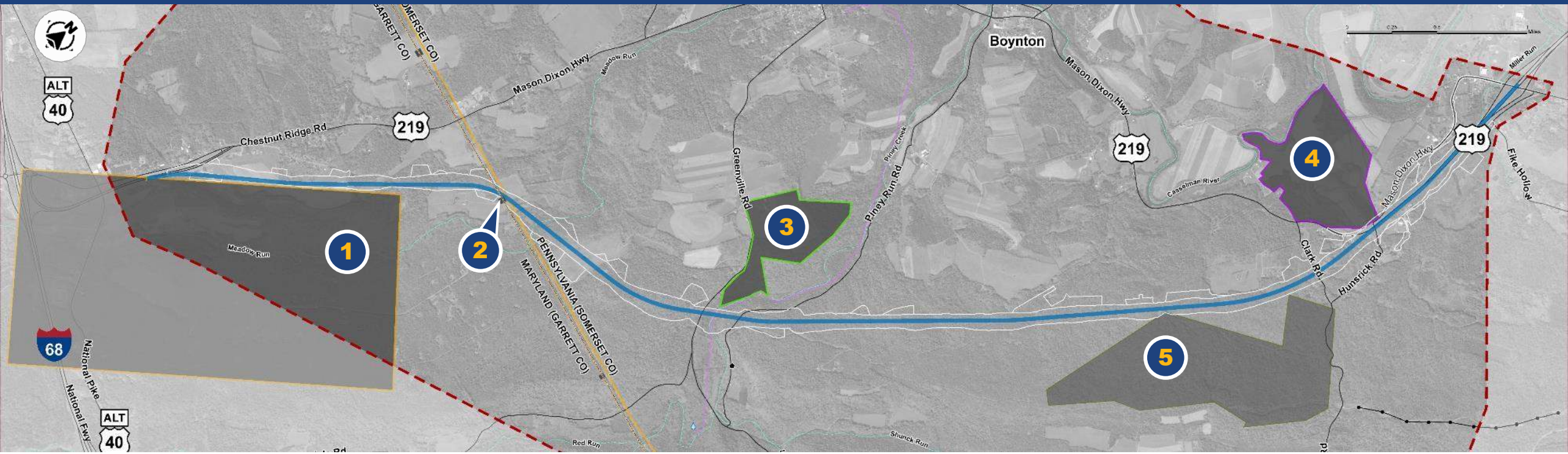




# PennDOT & SHA's Recommended Preferred Alternative



# Recommended Preferred Alternative – E-Shift Modified



- 1** Tomlinson Inn & Little Meadows
- 2** Mason Dixon Marker
- 3** Deal Farm
- 4** Miller Farm
- 5** Pennsylvania State Game Land

# Recommended Preferred Alternative

- **E-Shift Modified** is PennDOT and SHA's Recommended Preferred Alternative based on:
  - Environmental Impacts
  - Resource agency comments (received to date)
  - Public input





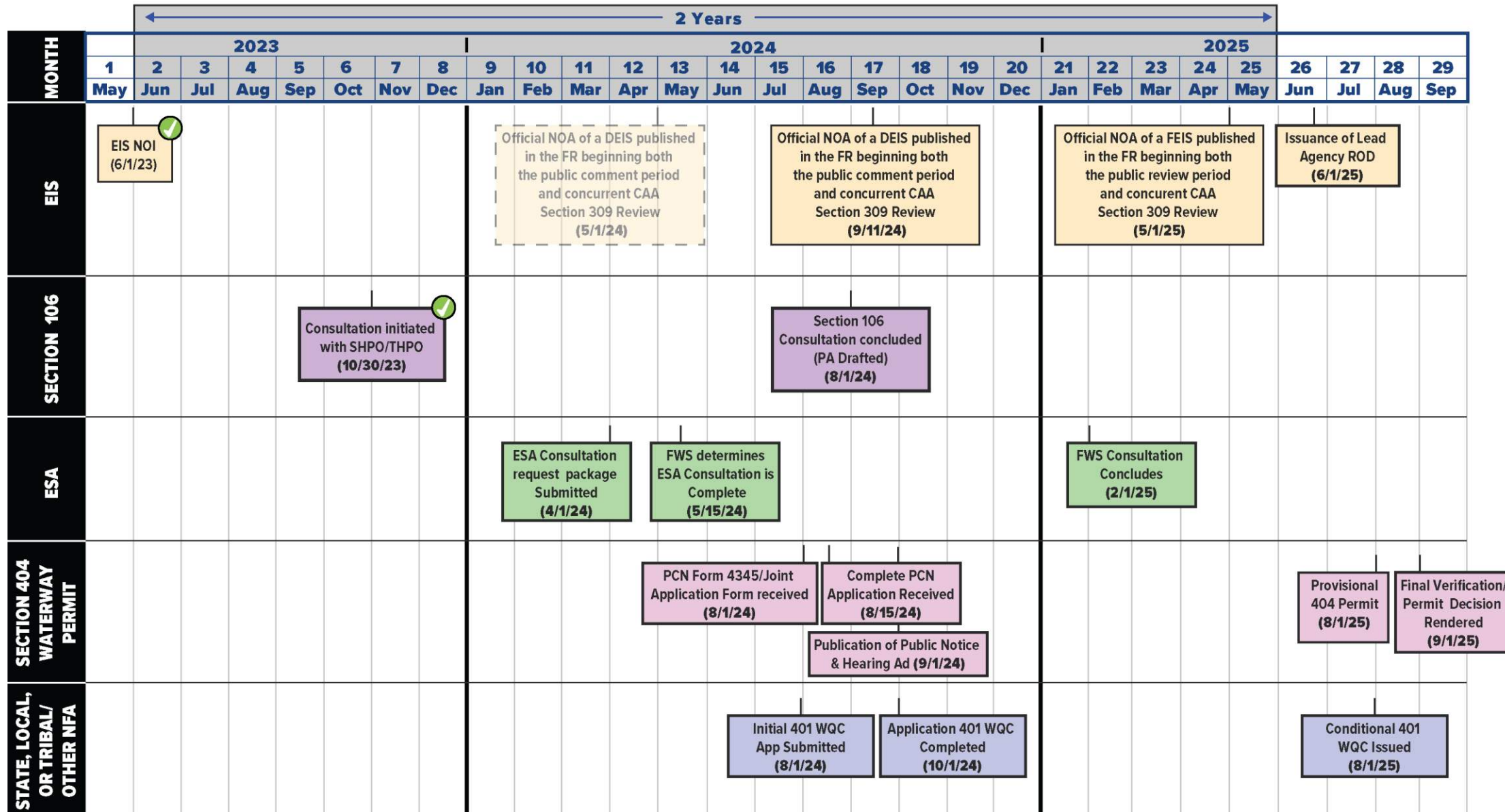
# Federal Permitting Dashboard

# Federal Dashboard = Major Project

- Major projects are entered into a Federal Permitting Dashboard that alert partnering agencies of key milestone dates and associated required approvals.
- The following schedule reflects coordinated dates between FHWA, USACE, PADEP and MDE necessary to issue a Section 404 Wetland & Waterway Permit 90-days subsequent to the Publishing of the Joint NEPA/404 Final EIS and Record of Decision (ROD).

Joint ACM/IRM Virtual Field Scoping Meeting was held on 11/16/21

In-Person & Virtual Public Scoping Meeting were held on 6/23/22 & 6/27/22 respectively





# Lessons Learned and Challenges

- Past Project (Somerset to Meyersdale)
- Utilizing a wide Limit of Disturbance and preliminary SWM basins has given us flexibility to modify the design
- FHWA HQ - PA and MD
  - Other agencies include PA and MD SHPOs
- Coordination
  - ACM/IRM (7 Times)
  - Weekly Permitting Meetings
  - Bi-Monthly Meetings (PennDOT, SHA, FHWA, etc..)
  - Bi-Monthly Meetings PennDOT and SHA
- Accelerated Provisional Permitting and NEPA

# Project Schedule



## PHASE 1: ENVIRONMENTAL CLEARANCE

Public Meeting No. 1 to Present Detailed Alternatives - **JUNE 23, 2022**

Public Meeting No. 2 to Present Detailed Alternatives - **NOVEMBER 16, 2023**

**Newsletter No. 1 to Present Recommended Preferred Alternative - SPRING 2024**

Circulate Draft Environmental Impact Statement (DEIS) - **SUMMER 2024**

Conduct Public Hearing - **FALL 2024**

Public Meeting No. 3 to Present Preferred Alternative & Mitigation - **SPRING 2025**

Complete Final Environmental Impact Statement (FEIS) and Issue Record of Decision (ROD) - **SUMMER 2025**

WE ARE HERE



## PHASE 2: PRELIMINARY ENGINEERING (FULLY FUNDED)

Complete Preliminary Engineering Design - **2023 to 2025**



## PHASE 3: FINAL DESIGN (FULLY FUNDED)

Complete Final Design & Right-of-way Acquisition - **2025 to 2028**



## PHASE 4: CONSTRUCTION (CONTINGENT UPON FUNDING)

Complete Construction - **2029 to 2031**

