

**5 - PROJECT SPECIFIC  
AGREEMENTS  
WITH  
1 BRIDGE EACH**

# ROUTE 3008 OVER SOUTH GLADE RUN



- **Scope:** Bridge Replacement on SR 3008 (West Mud Pike) over South Glade Run in Milford Twp, Somerset County
- **Construction Estimate:** \$1.0 Million - \$5.0 Million
- **Anticipated Construction Year:** 2028



# ROUTE 3008 OVER SOUTH GLADE RUN



# ROUTE 2025 OVER CLEAR WATER CREEK



- **Scope:** Bridge Replacement on SR 2025 (Milk and Water Rd) over Clear Water Crk, West Providence Twp, Bedford County
- **Construction Estimate:** \$1.0 Million - \$5.0 Million
- **Anticipated Construction Year:** 2028



# ROUTE 2025 OVER CLEAR WATER CREEK



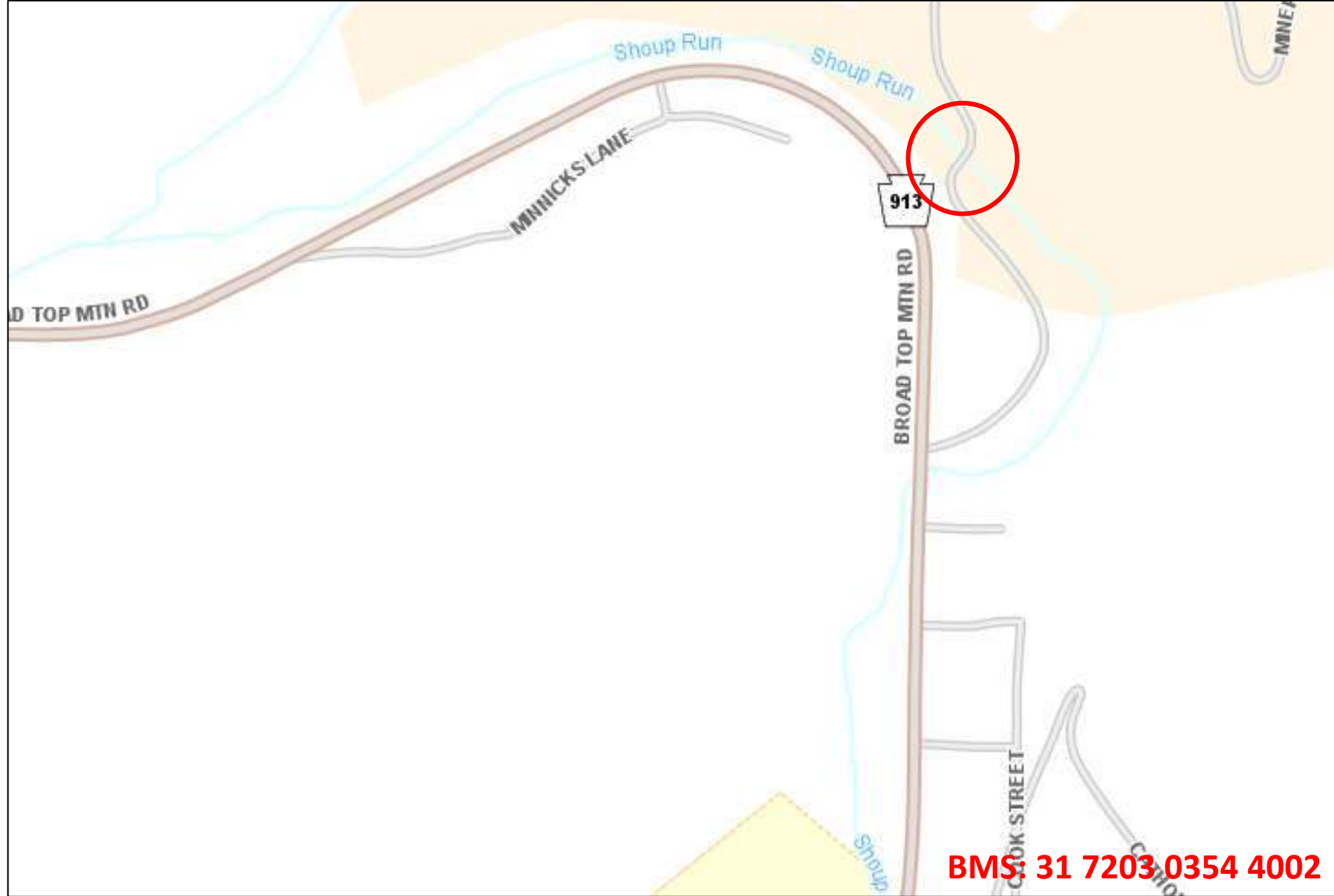
# T-354 OVER SHOUPS RUN



- **Scope:** Bridge Replacement on T-354 (Minersville Rd) over Shoups Run in Carbon Twp, Huntingdon County
- **Construction Estimate:** Less than \$1.0 Million
- **Anticipated Construction Year:** 2029



# T-354 OVER SHOUPS RUN



**BMS: 31 7203 0354 4002**



# ROUTE 1027 OVER BURGOON RUN

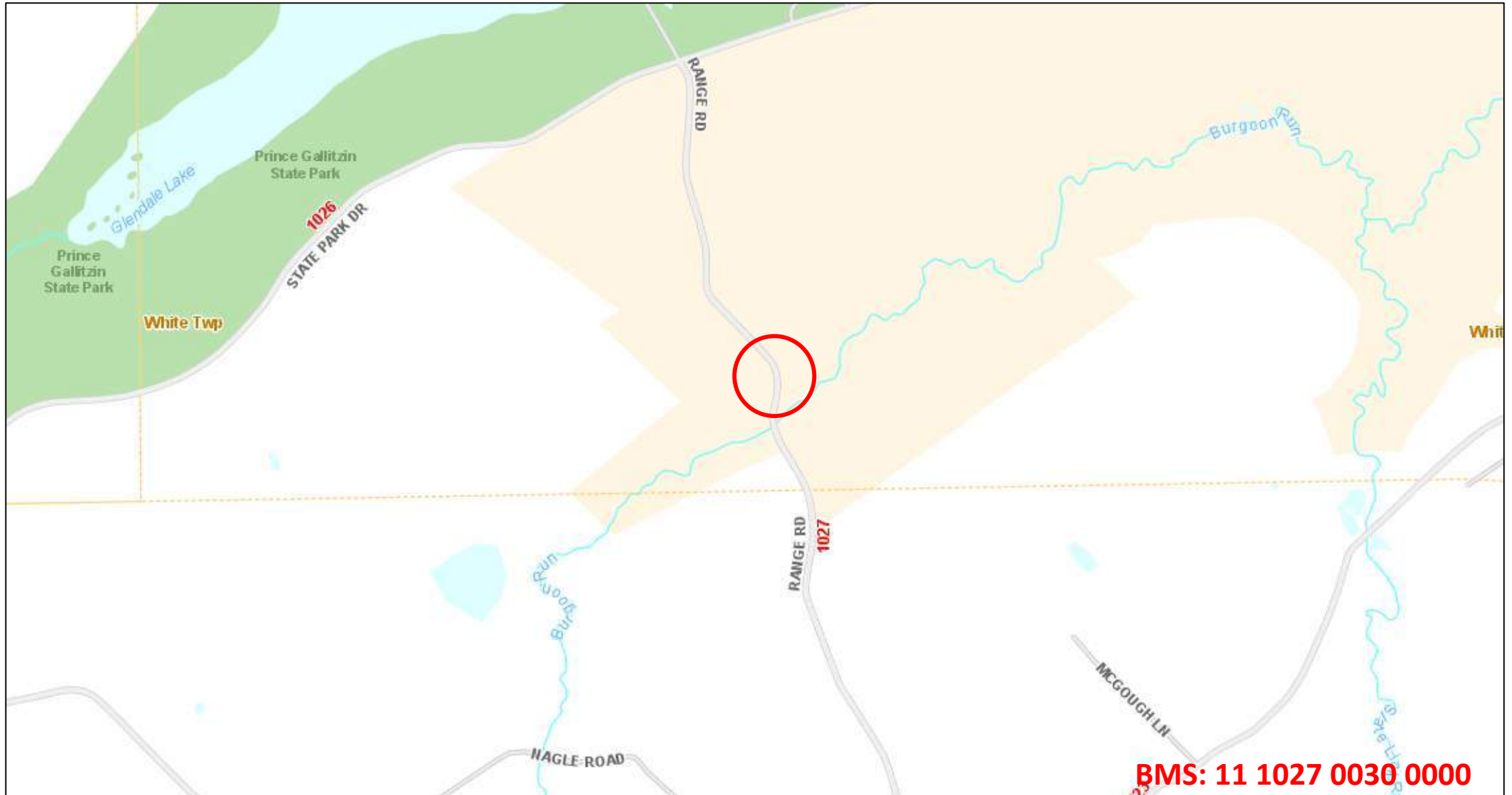


- **Scope:** Bridge Replacement on SR 1027 (Range Rd) over Burgoon Run in White Twp, Cambria County
- **Construction Estimate:** \$1.0 Million - \$5.0 Million
- **Anticipated Construction Year:** 2029





# STATE ROUTE 1027 OVER BURGOON RUN



**BMS: 11 1027 0030 0000**



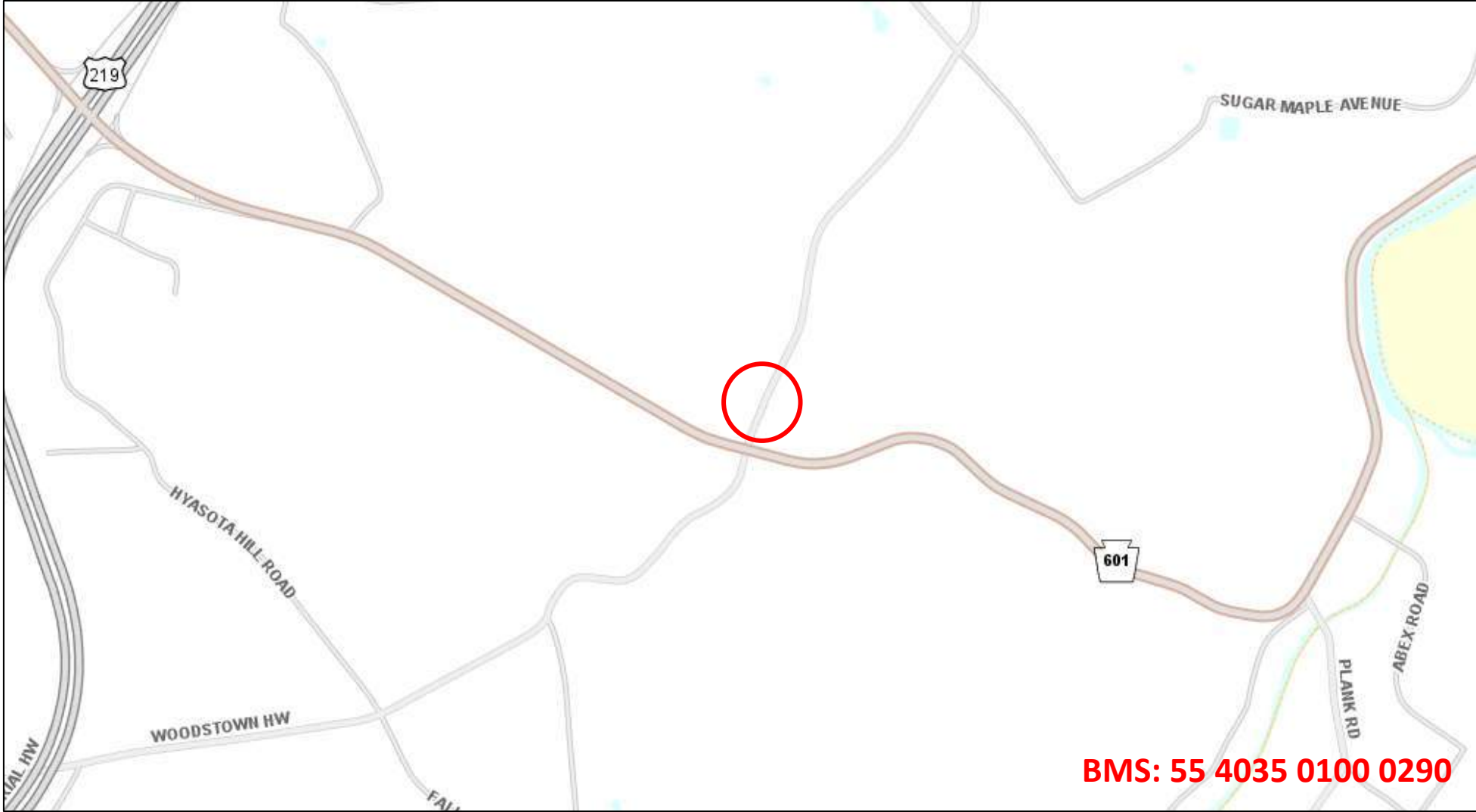
# ROUTE 4035 TRIBUTARY QUEMAHONING CREEK BRIDGE



- **Scope:** Bridge Replacement on SR 4035 (Woodstown Hwy) over Trib of Quemahoning Crk near the intersection of PA 601 in Conemaugh Twp, Somerset County
- **Construction Estimate:** Less than \$1.0 Million
- **Anticipated Construction Year:** 2028



# ROUTE 4035 TRIB QUEMAHONING CREEK BRIDGE



**BMS: 55 4035 0100 0290**



**5 - PROJECT SPECIFIC  
AGREEMENTS  
WITH  
1 ROADWAY EACH**

# US 22 –ROUTE 4031 TO PA 164



- **Scope:** Mill and Overlay on US 22 from SR 4031 (West High St) to PA 164 in Cambria and Munster Twps, Cambria County
- **Construction Estimate:** Greater than \$10.0 Million
- **Anticipated Construction Year:** 2028



# US 22 -ROUTE 4031 TO PA 164



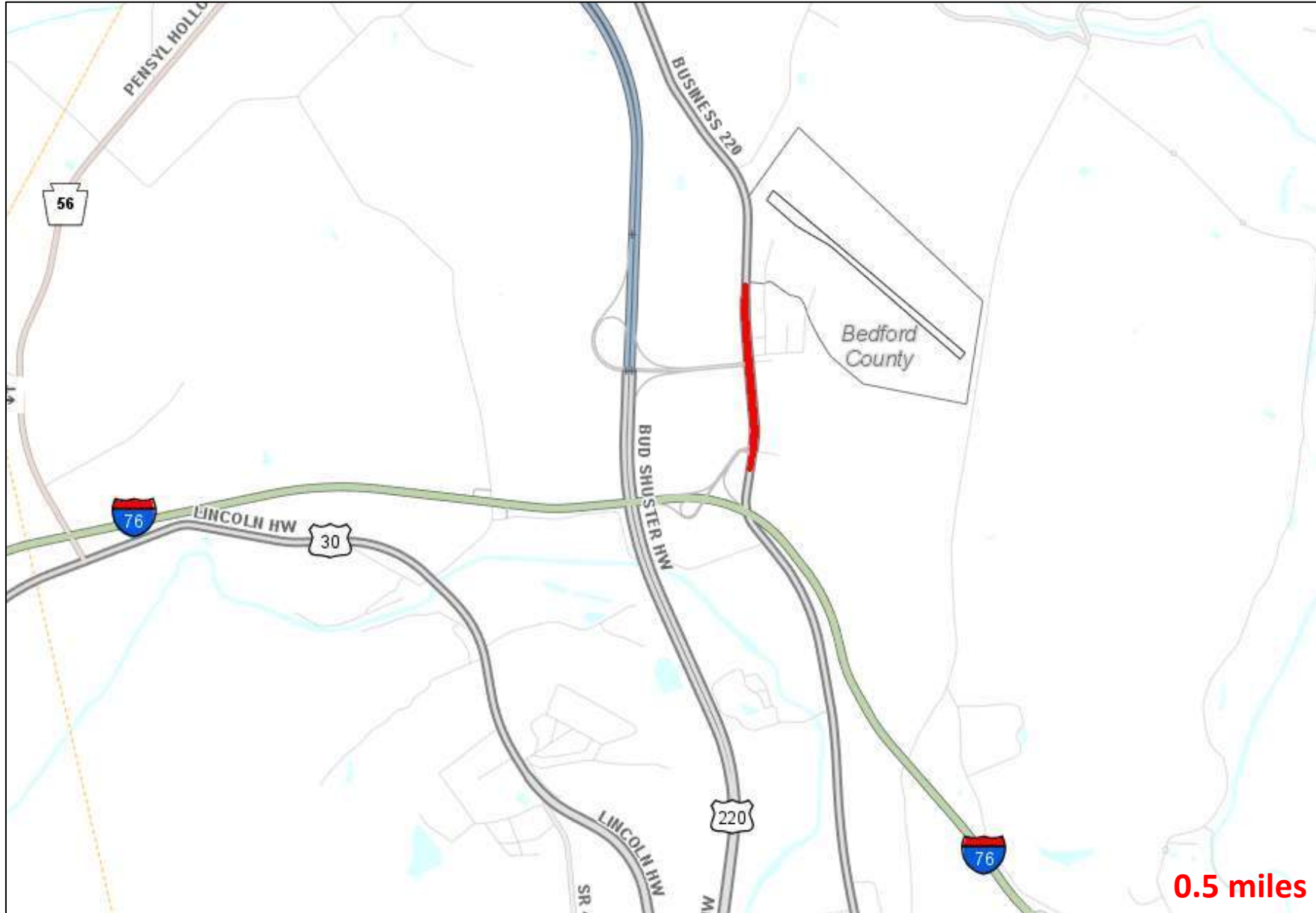
# ROUTE 4009 - CONCRETE TO CONCRETE



- **Scope:** Concrete Rehabilitation on SR 4009 (Business 220) from end of concrete to end of concrete in Bedford Twp, Bedford County
- **Construction Estimate:** Greater than \$10.0 Million
- **Anticipated Construction Year:** 2028



# STATE ROUTE 4009 – CONCRETE TO CONCRETE





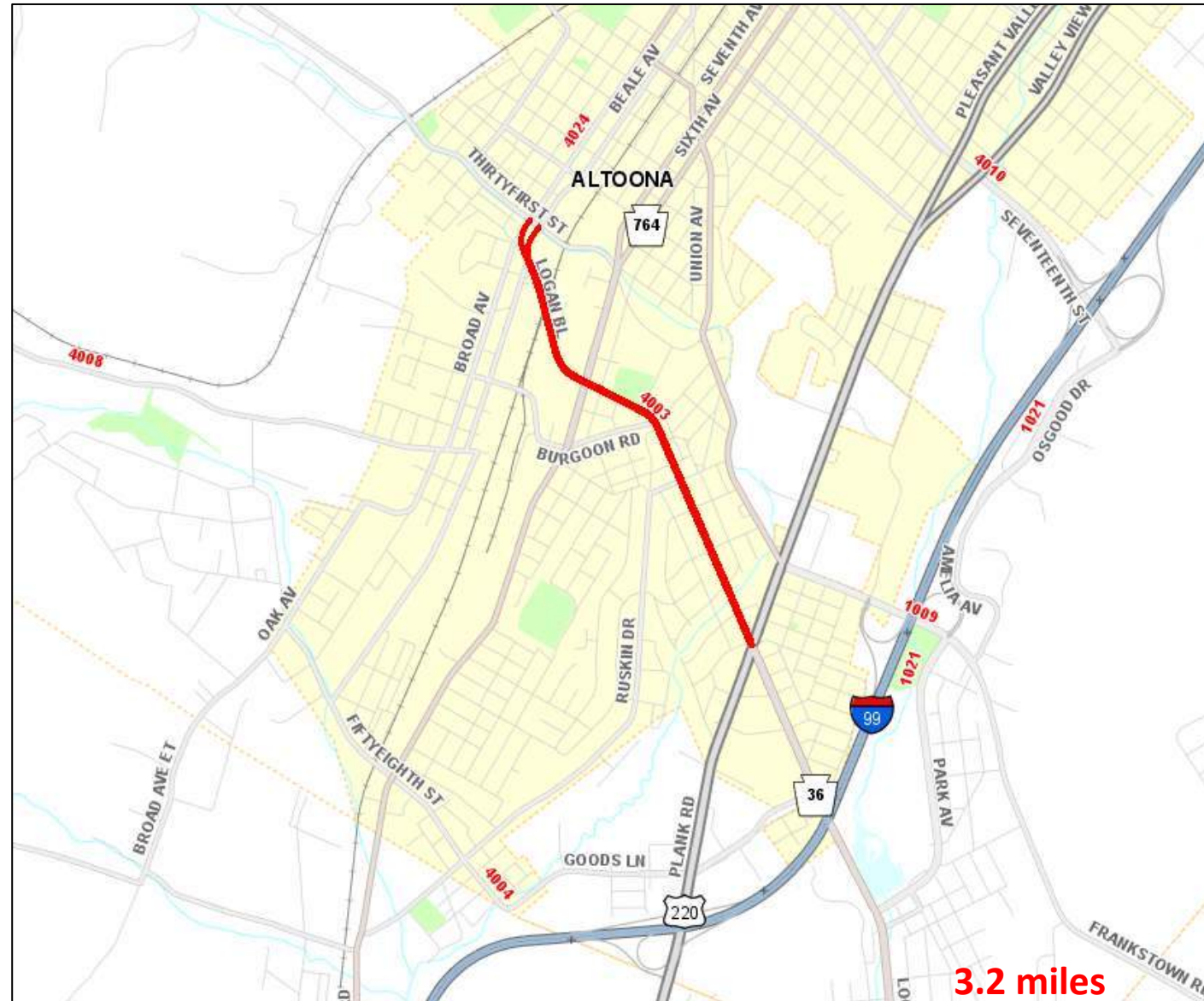
# ROUTE 4003 – PA 36 TO ROUTE 4024



- **Scope:** Resurfacing on SR 4003 (Logan Blvd) from PA 36 to SR 4024 (Broad Ave) in the City of Altoona, Blair County
- **Construction Estimate:** \$1.0 Million - \$5.0 Million
- **Anticipated Construction Year:** 2028



# ROUTE 4003 – PA 36 TO ROUTE 4024



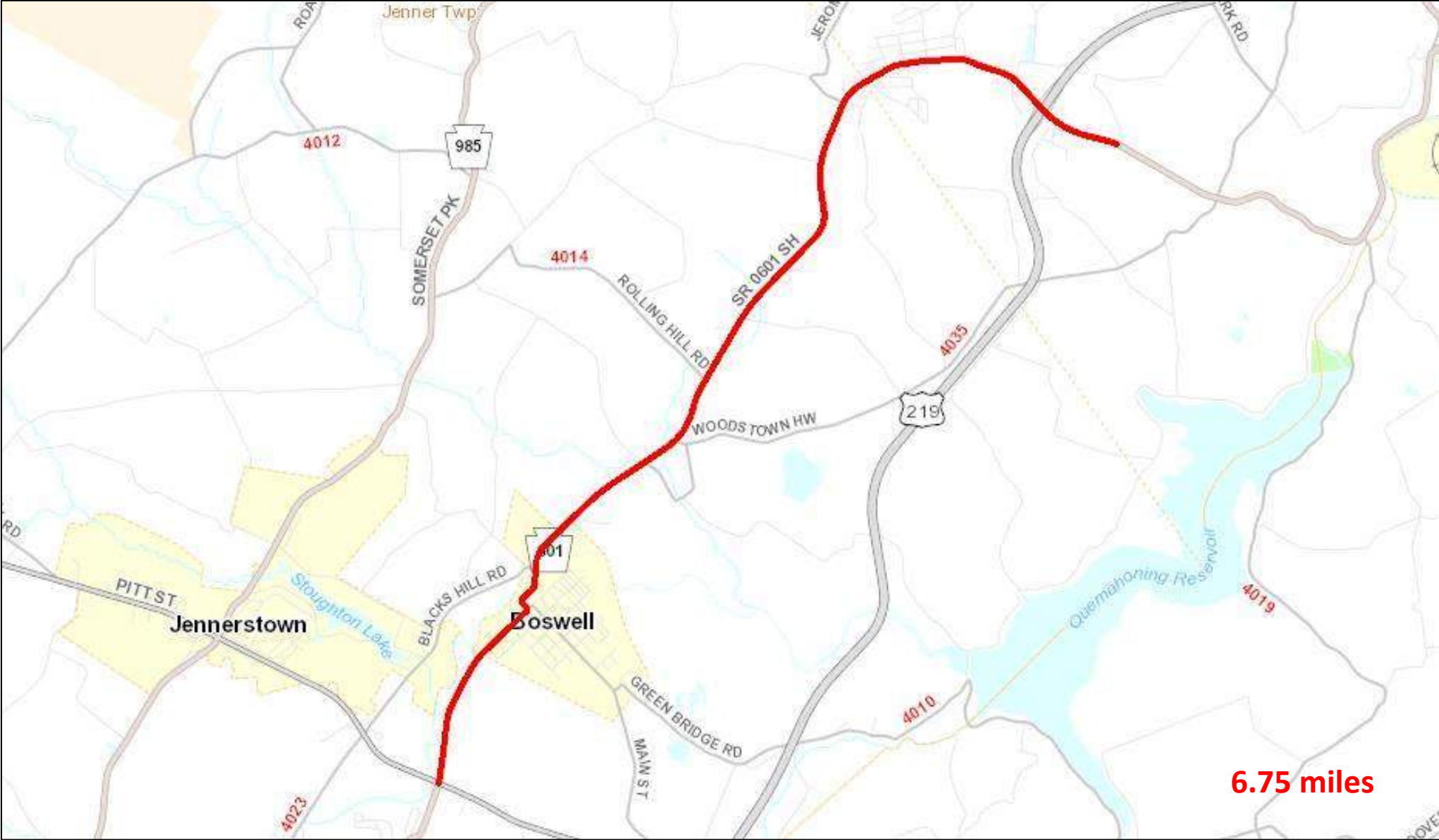
# PA 601 - US 30 TO US 219



- **Scope:** Resurfacing on PA 601 from US 30 to US 219 in Jenner and Conemaugh Twps and Boswell Boro, Somerset County
- **Construction Estimate:** \$1.0 Million - \$5.0 Million
- **Anticipated Construction Year:** 2027



# PA 601 - US 30 TO US 219



# US 522 - DOTT TO NEEDMORE



- **Scope:** Resurfacing on US 522 (Great Cove Rd) from PA 643 (Flickerville Rd) to PA 655 (Pleasant Ridge Rd) in Bethel and Belfast Twps, Fulton County
- **Construction Estimate:** \$1.0 Million - \$5.0 Million
- **Anticipated Construction Year:** 2028



# US 522 - DOTT TO NEEDMORE

