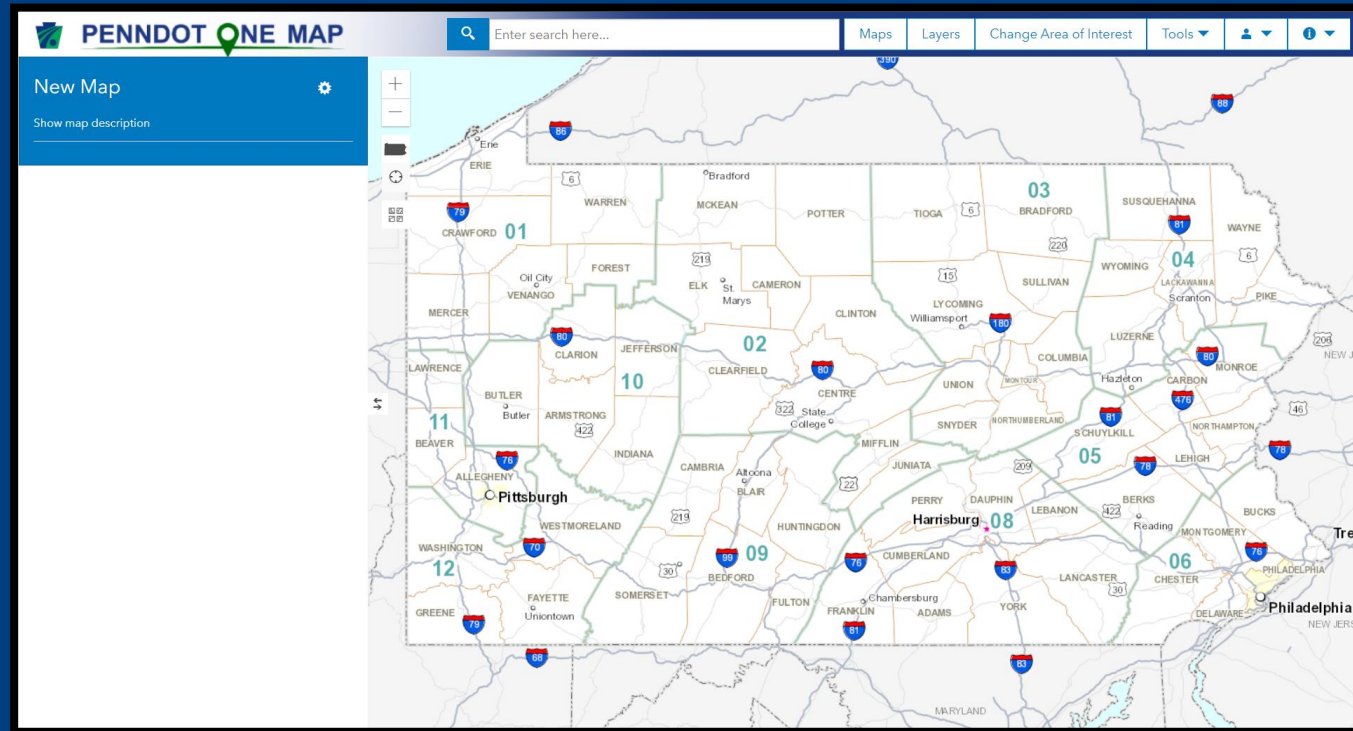


DISTRICT 9 - GIS



BRANDON SLIKO | DISTRICT GIS COORDINATOR | PENNDOT DISTRICT 9-0

ADDRESS: 1620 N. JUNIATA STREET, HOLLIDAYSBURG, PA 16648

EMAIL: BSLIKO@PA.GOV, PHONE: 814-696-7235

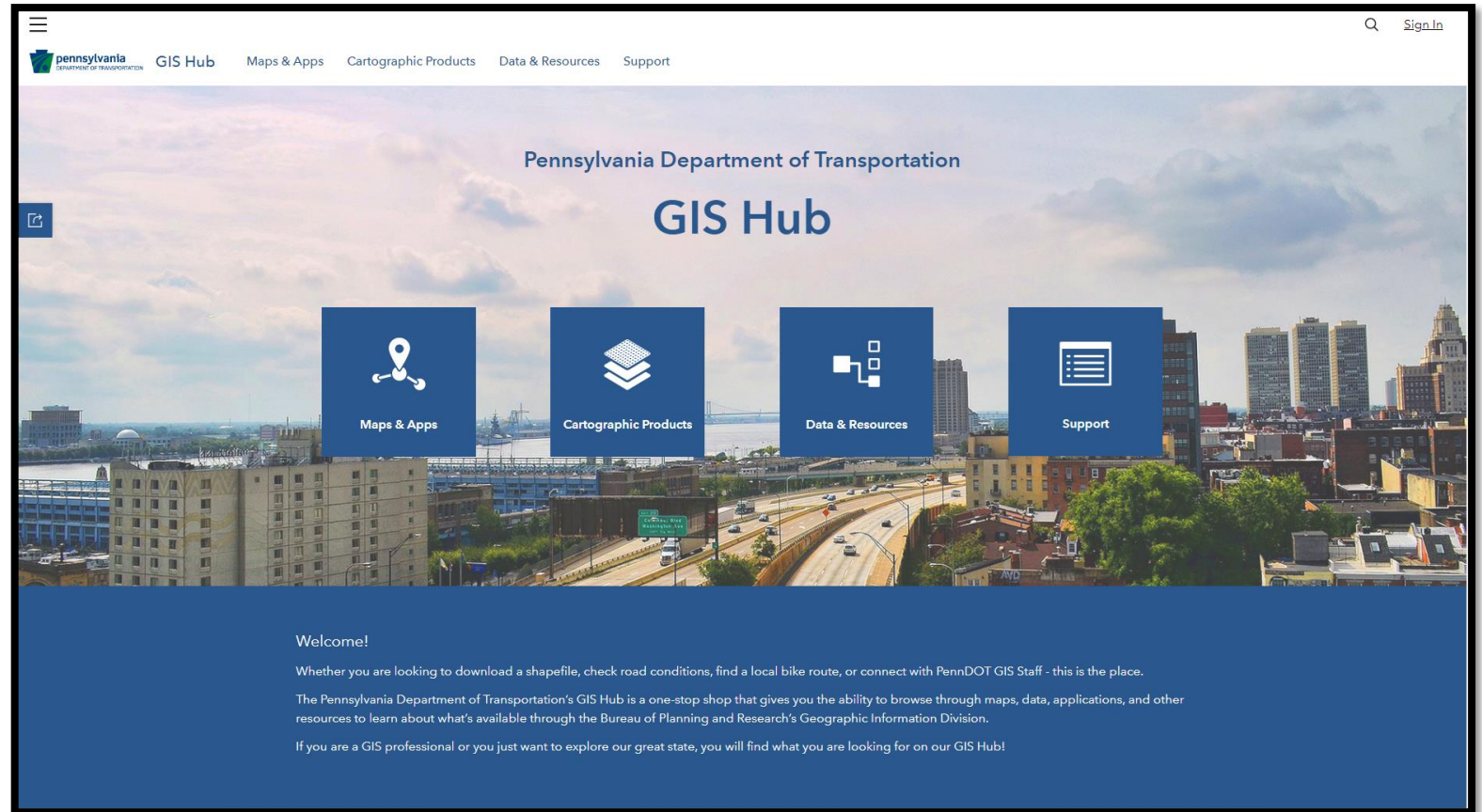
OVERVIEW

- GIS
 - **G**eographic **I**nformation **S**ystems
 - Tying data to a location on the planet.
- GIS Resources/User Platforms
 - [GIS HUB](#)
 - [OneMap](#)
 - [PennDOT OpenData](#)
- District GIS
 - Develop, Correct, & Analysis Data
 - Assess Needs
 - Develop Applications
 - Collaborate with Stakeholders




GIS HUB

- PennDOT
 - GIS Resources
 - Maps
 - Data
 - Applications




PENNDOT OPENDATA


- Available
 - Roadway
 - Traffic
 - Bridge
 - Project Planning


OPEN | DATA
PennDOT's Spatial Data Portal


Welcome to The Pennsylvania Department of Transportation's GIS Open Data Portal! This site provides access to all of our published GIS data that you can map, style, chart, download or share. Select a category or use the search box to explore open data now.




Layers and Data for Pennsylvania's Roads, including Traffic Counts and Administration



Layers and Data for Pennsylvania's State and Local Bridges



Layers and Data for Pennsylvania's Transportation Improvement Projects

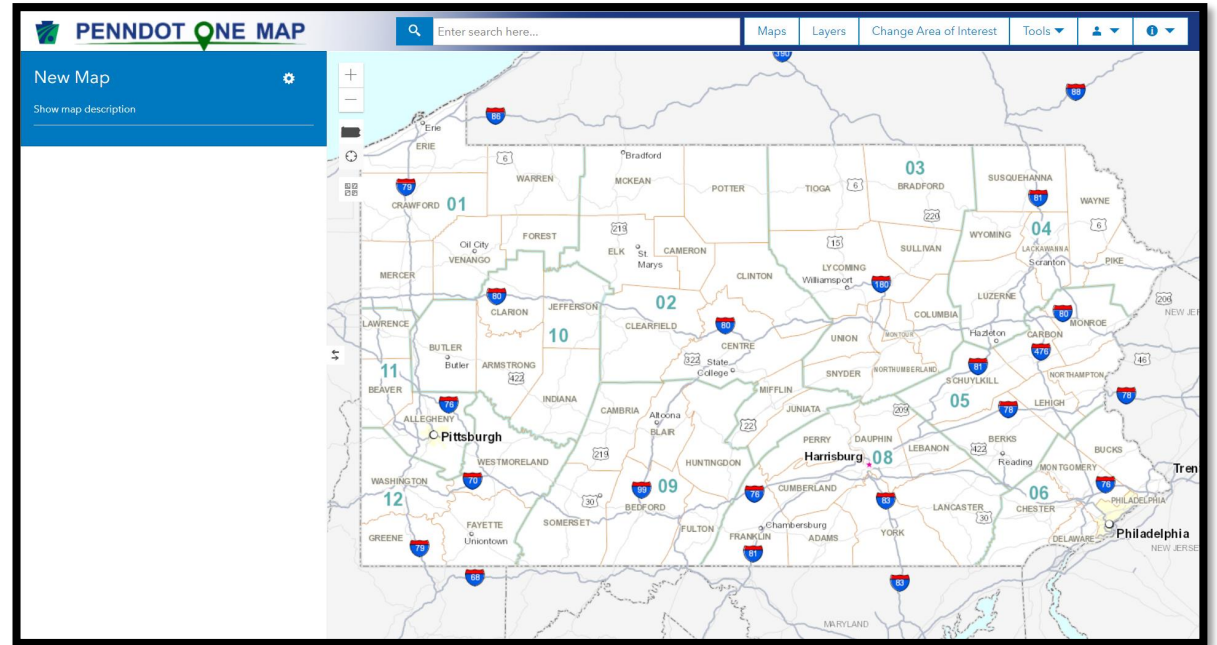


Layers and Data for Pennsylvania's Boundaries and Districts

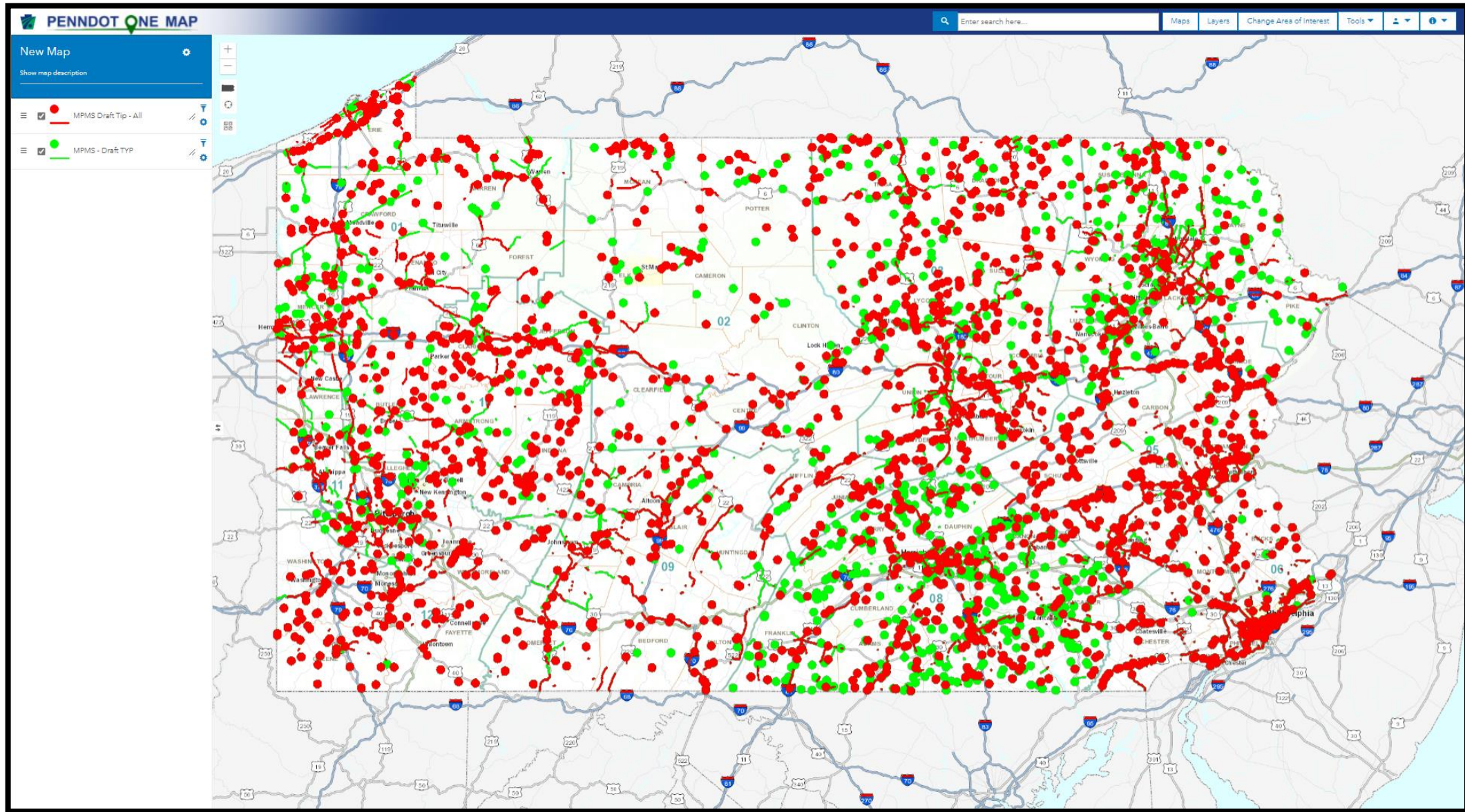


ONEMAP

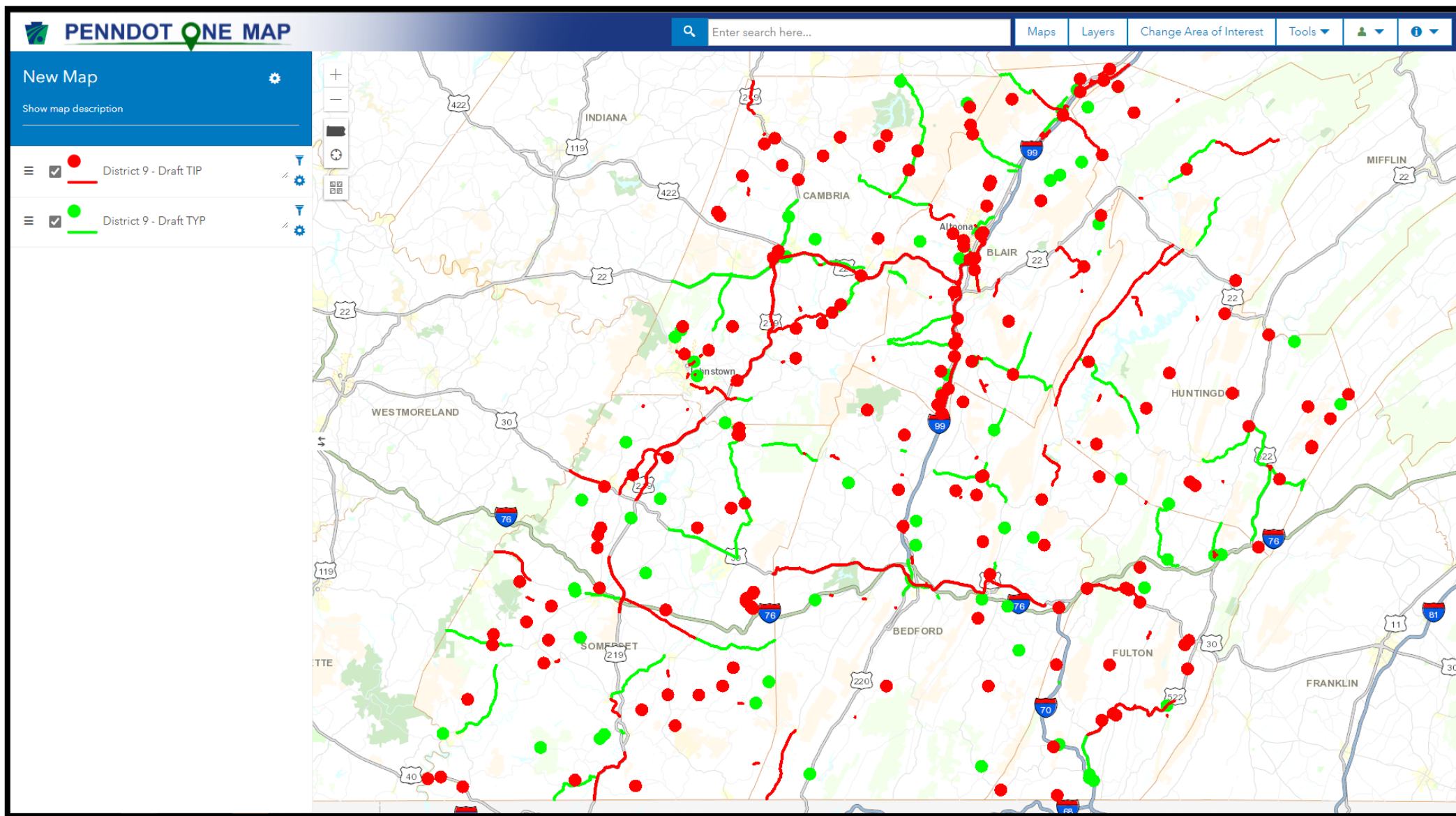
- End user platform
 - Publicly available information
 - CWOPA has extra features
- Numerous layer options
 - Traffic, project, infrastructure, environmental, etc.
- Best for general reference
 - Viewing & presenting straight forward information
 - Making simple maps
 - Limited capabilities
 - Analysis
 - Customization
 - Mass Sharing



PENNDOT - TIP & TYP PROJECTS



DISTRICT 9 - TIP & TYP PROJECTS





ANY
QUESTIONS?